

105x148.5mm

NOORCO

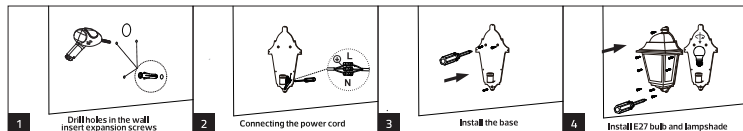
WALL LAMP HOUSING



Warning

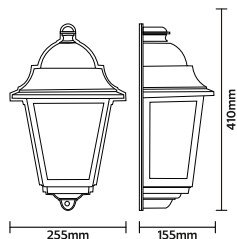
1. Installation position: European-style wall lamps need to be installed on the wall. Choose a flat, solid, and defect-free location on the wall for installation, and it should be coordinated with the placement and size of the room's furniture. 2. Power supply issues: Before installation, confirm whether the wires on the wall meet the installation specifications. It is recommended to have a professional electrician install it and ensure that the cable coordinates with the wall lamp properly. 3. Installation height: The installation height of European-style wall lamps is generally 1.6 meters to 1.8 meters from the ground, which will not hit people's heads and will not have adverse effects on the eyes. 4. Installation method: There are two types of installation methods for European-style wall lamps: fixed and hanging. The fixed type requires drilling holes in the wall and fixing the wall lamp on the wall; the hanging type requires hanging the wall lamp on the wall with a hanger and hiding the wires inside the hanger.

Product Installation and Wiring Diagram



Product Specifications and Dimensions

Model No:	NR-OWLS2651-1
Input:	AC100-240V 50/60Hz
Power:	Max. 40W
Cap Type:	E27*1
IP rated:	IP65



ta:50°C



Customer Service Center: 8004300030

www.meshkati.sa

Made in China

صنع في الصين

