

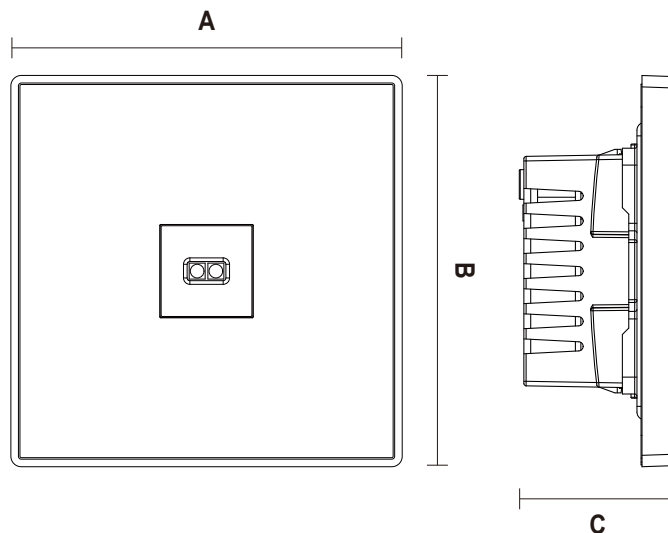
Handwave Sensor Switch

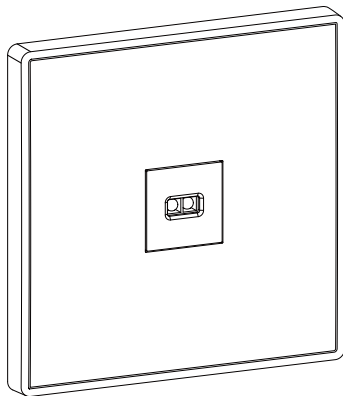
D1227 Series
IP20



Item Code	P (W)	Sense Distance (cm)	Colour	Dimensions in mm			kg
				A	B	C	
D1227-W	200	1-8	White	86	86	34	0.1
D1227-P	200	1-8	Pearl White	86	86	34	0.1
D1227-GR	200	1-8	Gray	86	86	34	0.1
D1227-BK	200	1-8	Black	86	86	34	0.1

Dimensions in mm





Description:
Handwave Sensor Switch

Main material:
PC

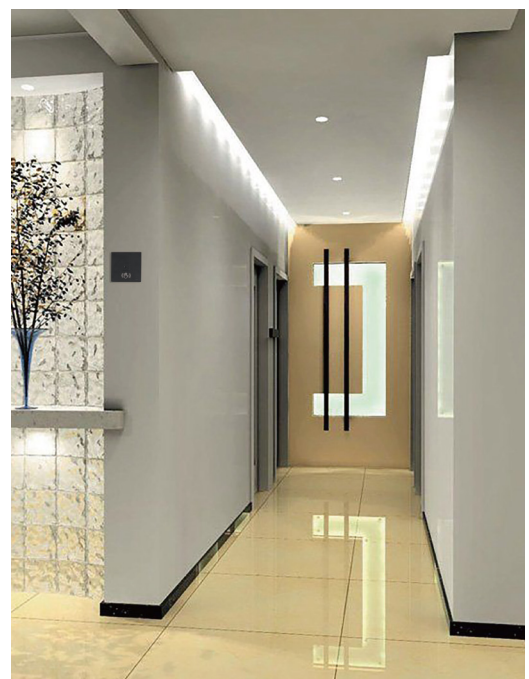
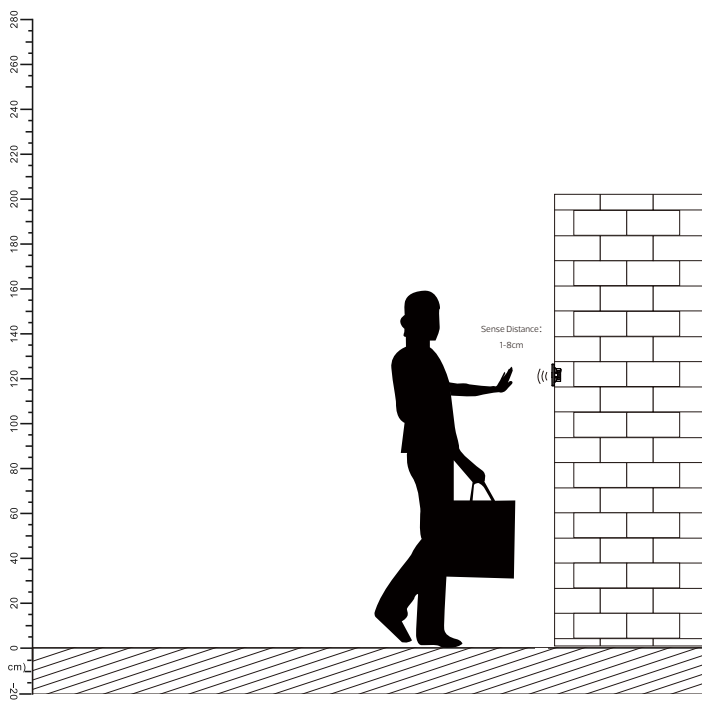
Specification

The simple yet powerful Gesture Sensing Switch allows you to effortlessly control your home lighting and with a gentle wave of your hand. Say goodbye to traditional switches and enjoy a touchless smart control experience.

With just a single gesture, you can turn on or off the lights, adjust the brightness, and create personalized lighting effects. No more fumbling for switches in the dark or worrying about leaving lights on. The Gesture Sensing Switch brings you the convenience of energy-saving control.
IP20

Applications

. Corridor . Stairs . Garage . Balcony



Wiring diagram

