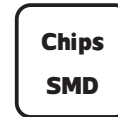
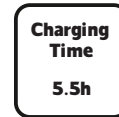
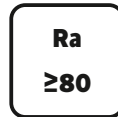
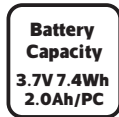
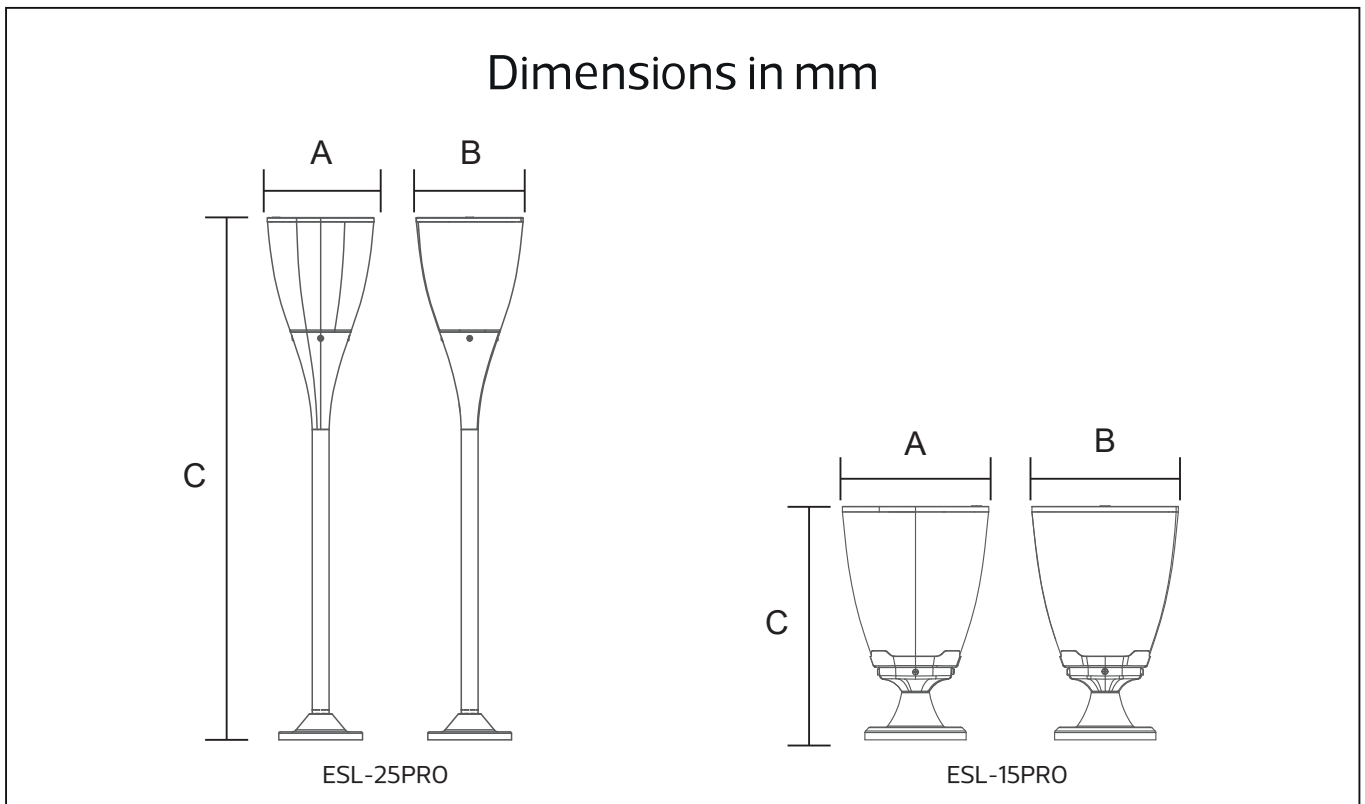


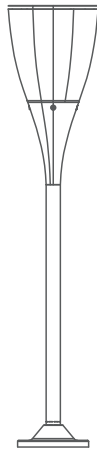
Solar LED Outdoor Garden Light

ESL-15PRO Series
IP64/IK10



Item Code	P(W)	CCT(K)	Dimensions in mm			kg
			A	B	C	
ESL-15PRO	0.9	3000	158	158	253	0.80
ESL-25PRO	0.9	3000	158	158	779	1.0



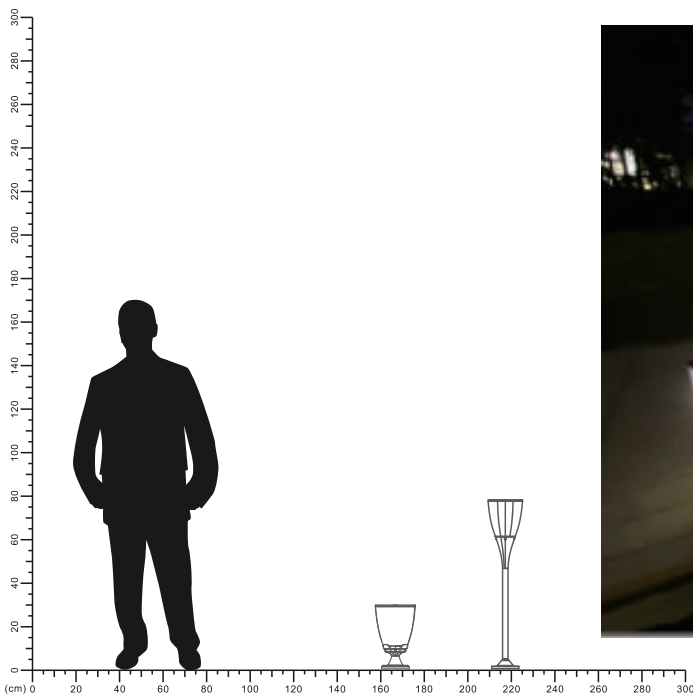


Description:
Solar LED Outdoor Garden Light

Main material:
Die-cast aluminum

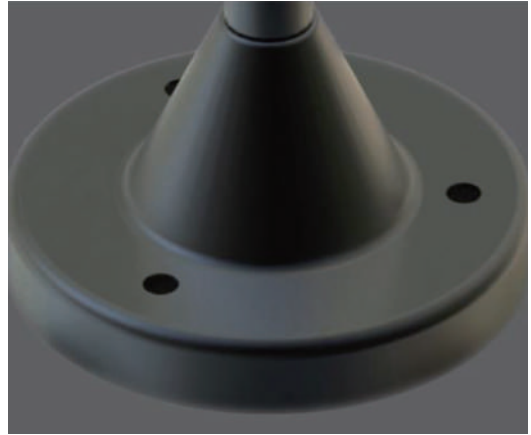
Specification
Energy saving, up to 85% energy saving comparing to standard halogen and incandescent lamps High quality light, high color rendering, less heat, no UV or IR radiation
LED driver is included
IP 64

Applications
. Park
. Square
. Corridor





Solar Charging Efficiency:
> 21% Switch



Bracket



Warm White LEDs
190lm/W



Aluminum Alloy Body

