

COMPANY SOLAR UP&DOWN DOWNLIGHT IN-GROUND BRICKLIGHT FLOODLIGHT BOLLARD BULKHEAD GARDEN URBAN CLASSIC URBAN MODERN POST LAMPS REFERENCES

GLOBE 250 MODERN

SMALL SIZE



Ø 250 mm PMMA globe, complete with modern globe base made of shockproof resin material, UV-rays stabilized, rust and corrosion-free. Suitable for post top or wall installation. Supplied as optional with TÜV-CB certified, long-life and efficient **LED lamps** suitable for outdoor use. Insulation class II, protection rating IP 55.

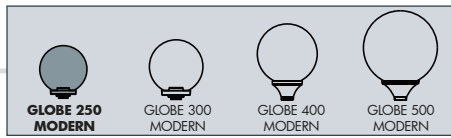
Globo Ø 250 mm in polimetilmetacrilato (PMMA) completo di base moderna realizzata in resina antiurto, stabilizzata ai raggi UV, inattaccabile da ruggine e corrosione. Idoneo per il montaggio a palo o a parete. Fornito anche completo di lampadine LED adatte ad uso in ambiente esterno, certificate TÜV-CB, di lunga durata ed elevata efficienza. Classe di isolamento II, grado di protezione IP55.

6,5W	8,5W	11W
800 lm	920 lm	1200 lm
2700 K	2700 K	4000 K 6500 K
+80°C -30°C	90% HUMIDITY	VOLTAGE SURGE RESISTANT
INDOOR & OUTDOOR USE		



G26.114

MADE IN ITALY



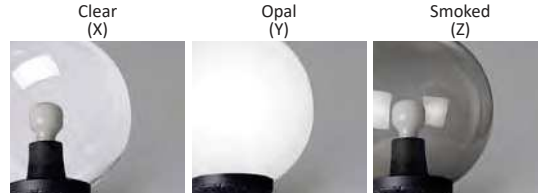
GLOBE 250 MODERN - COMPONENTS

IP55



Ø 250 mm **GLOBE** made of UV-rays stabilized polymethylmethacrylate (PMMA), one piece only. Available in clear, opal or smoked colour.

GLOBO Ø 250 mm in polimetilmetacrilato (PMMA), resistente all'ingiallimento ed ai raggi UV, realizzato in un unico pezzo. Disponibile nei colori trasparente, bianco o fumé.



GLOBE BASE with modern design, made of shockproof resin material, UV-rays stabilized, rust and corrosion-free. Supplied complete with E27 lampholder.

REGGIBOCCIA con disegno moderno realizzato in resina antiurto, stabilizzato ai raggi UV, inattaccabile da ruggine e corrosione. Fornito completo di portalampana E27.

GLOBE 250 MODERN

G26.B26 *



Dimensions and weight

Height: 260 mm
Diameter: 250 mm
Weight: 0,8 Kg

Moulded colours:

Black White

Diffuser PMMA:

Clear Opal Smoked

E27 FILAMENT



- Perfect **MATCHING WITH CLASSIC LANTERNS.**
- **SUITABLE FOR OUTDOOR USE:** 100-240V driver.
- **360°OMNIDIRECTIONAL LIGHT.**
- **HIGH EFFICIENCY:** 90% ENERGY SAVING.

E27 CCT SET(*)



- **A60 CCT SETTABLE:** 2700K/4000K/6500K.
- **SUITABLE FOR OUTDOOR USE:** 100-240V driver.
- **EYE COMFORT** opal glass.
- **HIGH EFFICIENCY:** >85% ENERGY SAVING.

100 - 240 V

*ADD. SUFFIX

suitable lamps: CFL-LED		E27 lampholder only		.E27
LAMP	POWER	LUMINOUS FLUX UP TO	COLOUR TEMP.	
FILAMENT LED E27	6,5W	800 lm	2700 K	.F1R
CCT SET LED E27	8,5 W	920 lm	6500 K 4000 K 2700 K	.V1K
CCT SET LED E27	11 W	1200 lm	6500 K 4000 K 2700 K	.T1K

6,5W filament = 60W incandescent
8,5W CCT = 75W incandescent
11W CCT = 75W incandescent

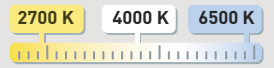
SAVE up to 89%

LED LAMPS



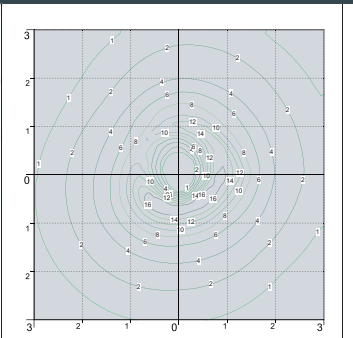
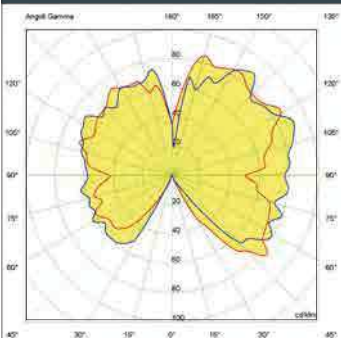
Comply with: EU2019/2015
EU2019/2020
Technical details on page 596.

CCT SETTABLE LED LAMP(*)



CCT switch settable in three different positions, to select the desired Kelvin temperature (2700K/4000K/6500K) and get a customized ambiance.

PHOTOMETRIC DATA SAMPLE



GLOBE 250 MODERN clear with Fumagalli Filament Led Lamp 6,5W.

POST height 1mt
6x6mt area: average 4 lux

The photometric data for all the versions are available upon request or on our website.

* ADD THESE SUFFIXES TO THE REFERENCES MENTIONED IN THE CATALOGUE

GLOBE 250 MODERN

SMALL SIZE



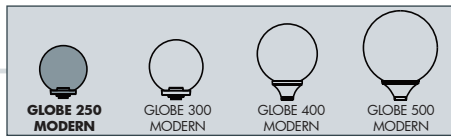
G26.240



G26.242.F1R



G26.257



NARDO /G250

E27 lampholder	G26.240.E27
6,5W filament	G26.240.F1R
8,5W CCT set	G26.240.V1K
11W CCT set	G26.240.T1K

Pcs 36
Kg 32,9
mc 0,829

DISMA /G250

E27 lampholder	G26.114.E27
6,5W filament	G26.114.F1R
8,5W CCT set	G26.114.V1K
11W CCT set	G26.114.T1K

Pcs 36
Kg 36,5
mc 0,829

GIAFFA /G250

E27 lampholder	G26.242.E27 resin
6,5W filament	G26.242.F1R resin
8,5W CCT set	G26.242.V1K resin
11W CCT set	G26.242.T1K resin

Pcs 2
Kg 4
mc 0,078

GLOBE 250 MODERN

G26.B26.E27

Pcs 2
Kg 1,6
mc 0,025

ARGO 300/G250 *

E27 lampholder	G26.255.E27 resin
6,5W filament	G26.255.F1R resin
8,5W CCT set	G26.255.V1K resin
11W CCT set	G26.255.T1K resin

Pcs 2
Kg 4,3
mc 0,061

*available colour: black

ARGO 500/G250 *

E27 lampholder	G26.256.E27 resin
6,5W filament	G26.256.F1R resin
8,5W CCT set	G26.256.V1K resin
11W CCT set	G26.256.T1K resin

Pcs 2
Kg 5
mc 0,070

*available colour: black

ARGO 800/G250 *

E27 lampholder	G26.257.E27 resin
6,5W filament	G26.257.F1R resin
8,5W CCT set	G26.257.V1K resin
11W CCT set	G26.257.T1K resin

Pcs 2
Kg 6,1
mc 0,093

*available colour: black

FEBO 1500/G250 *

E27 lampholder	G26.263.E27
6,5W filament	G26.263.F1R
8,5W CCT set	G26.263.V1K
11W CCT set	G26.263.T1K

Pcs 2
Kg 11,4
mc 0,173

*available colour: black