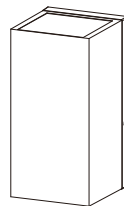


# NOORCO

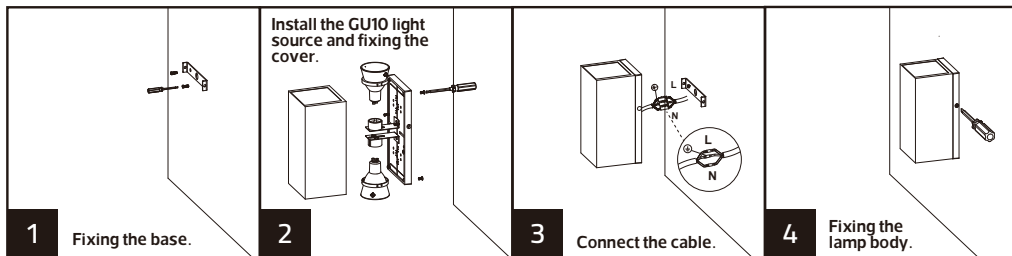
## WALL LAMP HOUSING



### Warning

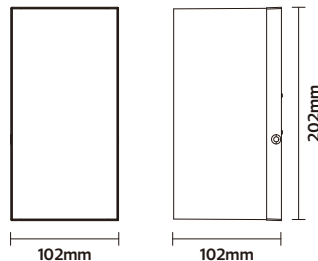
- Please read the product instructions carefully before installation. Keep this installation instruction manual for future reference.
- Please save this installation manual for future reference. Installation of stationary products and connection of cables shall comply with local national electrical codes.
- For safety reasons, the product must be grounded to prevent damage from electrical leakage.
- All installation procedures must be performed by qualified electrician personnel.
- This product belongs to the lamp holder shell, need to buy additional lamps in line with the lamp holder for use. If the shell is damaged and the waterproof grade cannot reach IP65, please cut off the power immediately and stop using it to avoid injury.

### Product Installation and Wiring Diagram



### Product Specifications and Dimensions

Model No:	NR-OWLS0001-2-BK
Input:	AC100-240V 50/60Hz
Cap Type:	GU10*2
Power:	Max.6W
Lamp Type:	MR16
IP rated:	IP65



ta:50°C



IP65

Customer Service Center.8004300030

مركز خدمة العملاء 8004300030

www.meshkati.sa

Made in China

صنع في الصين

