

## Product benefits & features:

- 1. Unified external dimensions:** T8 represents the diameter of the lamp tube (8/8 inches), with a standard size of 26mm in diameter. The length varies depending on the power, making it easy to replace and install.
- 2. High brightness:** The T8 lamp tube adopts LED chips, making its emission more uniform and bright, and more energy-efficient than ordinary incandescent lamps.
- 3. Long lifespan:** T8 lamps have a longer lifespan, usually reaching tens of thousands of hours, greatly reducing the frequency of replacement and maintenance.
- 4. Soft lighting:** The T8 lamp tube has relatively soft lighting, which does not produce dazzling strong light and is more suitable for long-term use.
- 5. High safety:** The T8 lamp tube adopts a DC power supply design and pays attention to the safety performance of the product during design and manufacturing. It usually has functions such as overload protection and short circuit protection, reducing the risk of damage to users and equipment caused by the lamp tube's own failure.

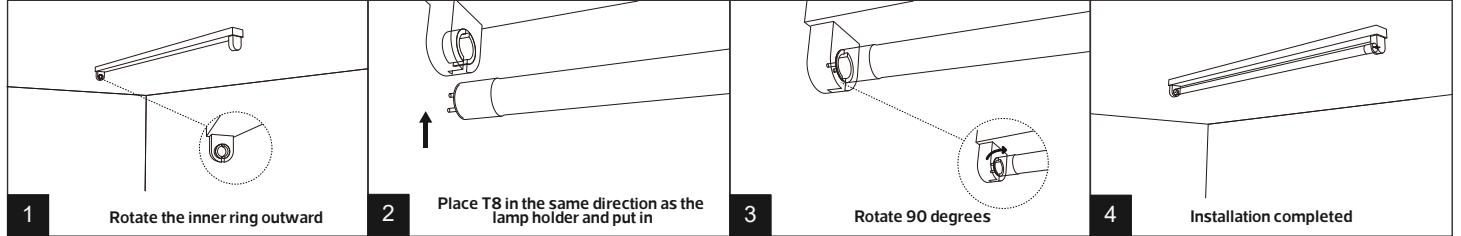
## Areas of application:

T8 tubes are commonly used for home and office lighting, exhibition displays, advertising lighting, industrial lighting, tunnel and road lighting, and stage lighting.

## Caution:

1. When replacing or installing T8 lamps, it is necessary to ensure that the power is cut off and appropriate tools and equipment are used for operation to avoid electric shock and accidents.
2. The T8 lamp tube must be inserted into the correct lamp holder and ensured to be firm and stable to avoid electric shock or lamp tube detachment caused by poor insertion and removal.
3. Regularly clean the dust and dirt on the surface of the T8 lamp tube using a soft and clean cloth or tissue. Be sure to disconnect the lamp tube from the power supply before replacement.

## Product Installation and Wiring Diagram



## Product Specifications and Dimensions

Item Code:	HV-T8-60-10	HV-T8-120-20
Input:	AC100-240V 50/60Hz	AC100-240V 50/60Hz
Power:	10W	20W
Lumen Output:	1067lm	2166lm
CCT:	3000K/6500K	3000K/6500K
Beam angle:	120°	120°
IP rated:	IP20	IP20
Ra:	≥80	≥80
LxWxH(mm):	600xΦ28	1200xΦ28



ta:40°C

Customer Service Center.8004300030

Made in China  
صنع في الصين

