

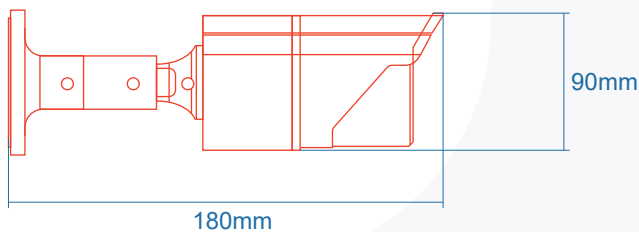
IP HD Camera



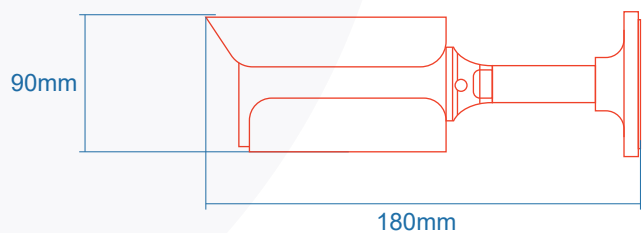
Sensor 1/2.7" Progressive Scan CMOS	Camera Pixels 1MP (1280*720)	Infrared Light 36	Day/Night ICR (Infrared filter type)	Infrared Night Vision Distance 30MM	Frame Rate 15fps	Lens 4MM	Temperature -10 °C ~ 60 °C	Power 6W MAX	IP66
---	--	-----------------------------	--	---	----------------------------	--------------------	--------------------------------------	------------------------	-------------

Item Code	Power Supply	Night Vision Type	Recording Type	Dimensions in mm			Kg
				L	W	H	
MS-CAM103-WH	12V (±20%) DC/1A	Black and white	Full-time recording	180	90	60	0.6
MS-CAM104-WH	12V (±20%) DC/1A	Black and white	Full-time recording	180	90	60	0.6

Dimensions in mm



MS-CAM104-WH



MS-CAM103-WH

Super function

- *Powerful digital white balance function
- *Humanized design, use more convenient
- *Super electronic shutter function,automatic gain control
- *Digital noise reduction technology,with high quality of signal to noise ratio
- *With high quality aperture lens, ensure the image effect
- *High precision optical transparent cover, trasmittance increased by 40%
- *Internal zinc alloy assembly, good heat dissipation, solid and shock, long service life
- *Super light sensitivity, in the very low light conditions can also capture high quality and not produce images
- *Progressive dynamic scanning CCD,can be obtained in the harsh environment of high resolution images



*Avoid using, outside the temperature of the following conditions: temperature of 20°C~ 50 C, humidity: less than 85%.

Network Indicator

Lens

Spotlight

IR LEDs

CDS

Network Port

Power Port

IR LEDs

Lens

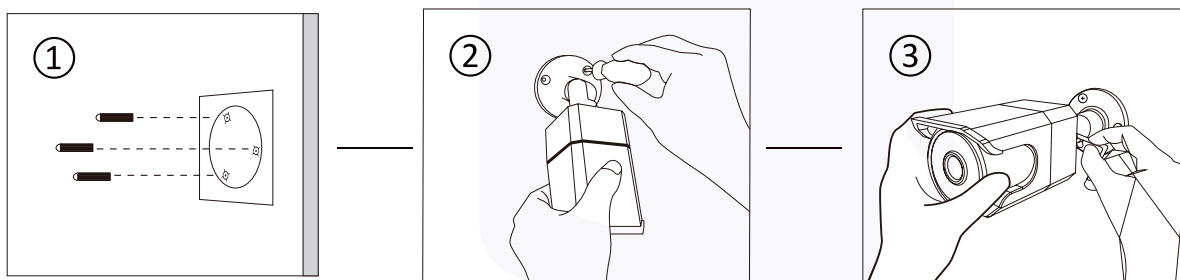
CDS

Power Port

Network Port

Mounting The Camera

1. Attach the mounting template, drill screw holes on the wall according to the mounting template, and insert rubber plugs into the holes.
2. Align the camera with the rubber plugs on the wall, and use a screwdriver (not included) to screw into the rubber plugs.
3. Adjust the camera to a proper angle and screw the bracket.

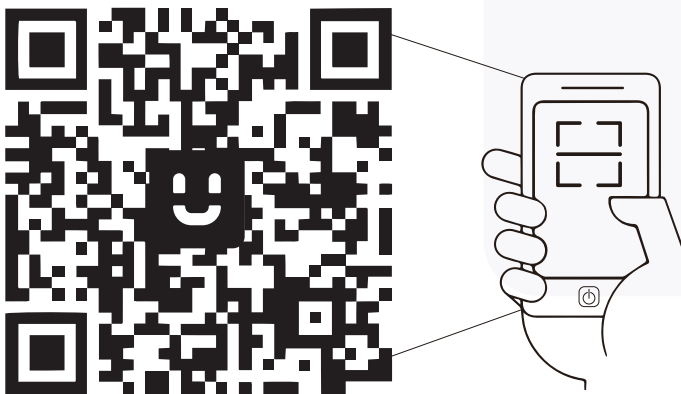


Download Huem App

1. Search the App "Huem" from Apple Store or Google Play.



2. Scan the QR code from the label or user manual.



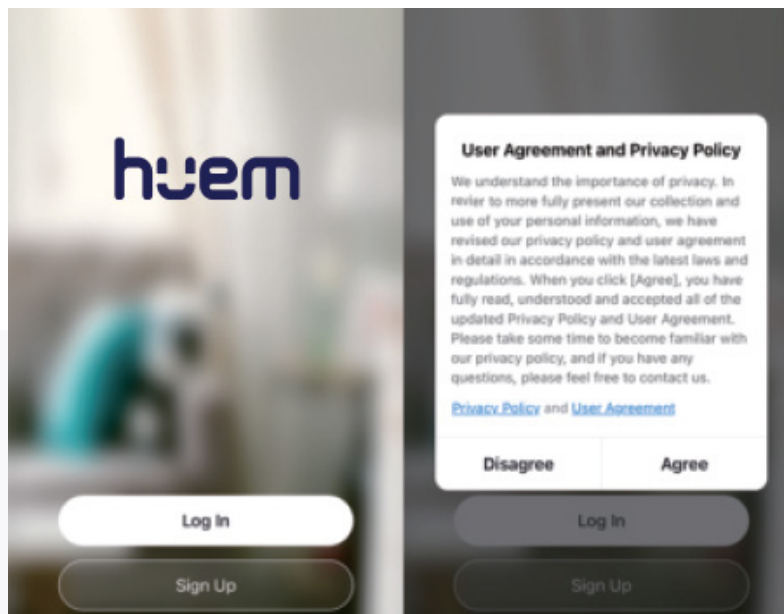
Android
5.0

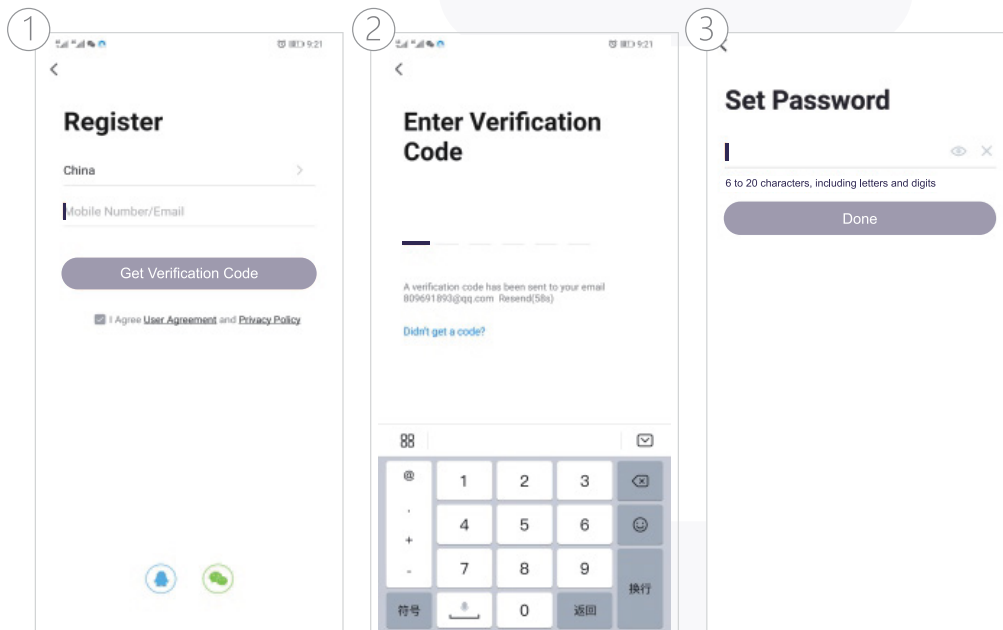
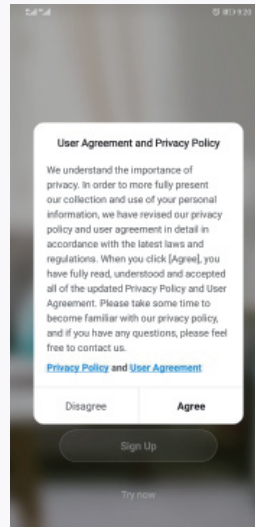
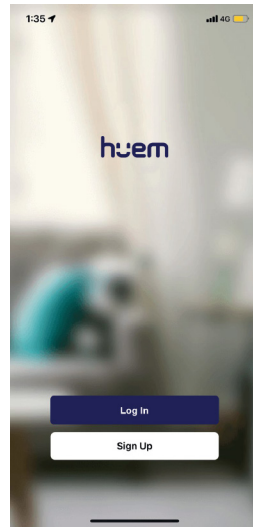


iOS 10.0

The App is compatible with Android 5.0 and iOS 10.0 and higher version.

Log in / Register App

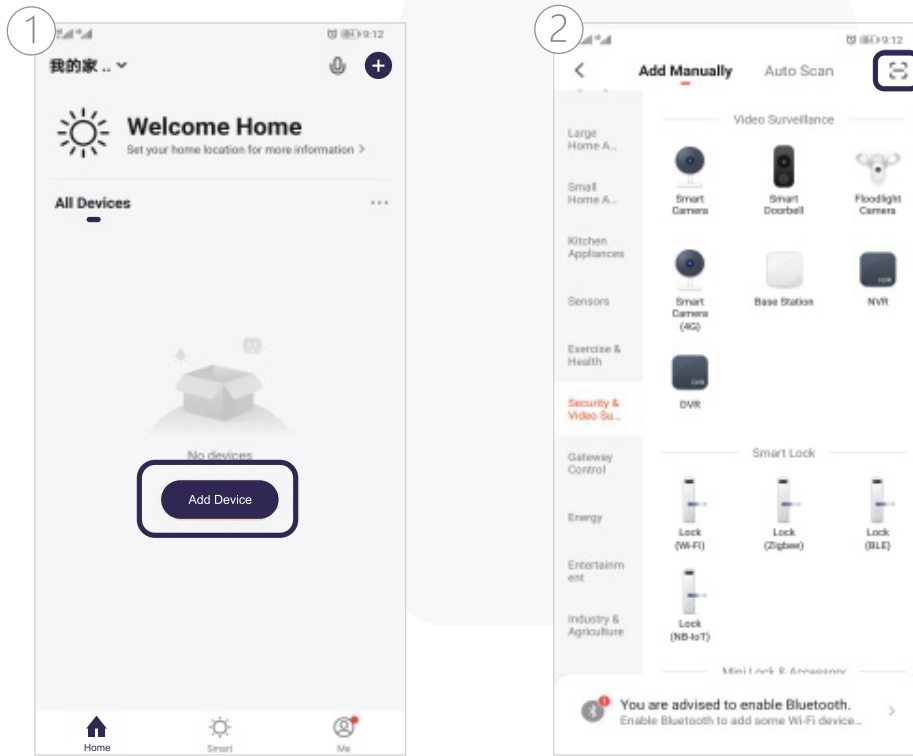




(If you have the existing account, there are two ways to login, one is with SMS verification Code, the other one is with password. In case you forget the password, you may choose login SMS verification Code or you can choose forgot password to reset it by Entering Verification Code which sent to you mobile via message.)

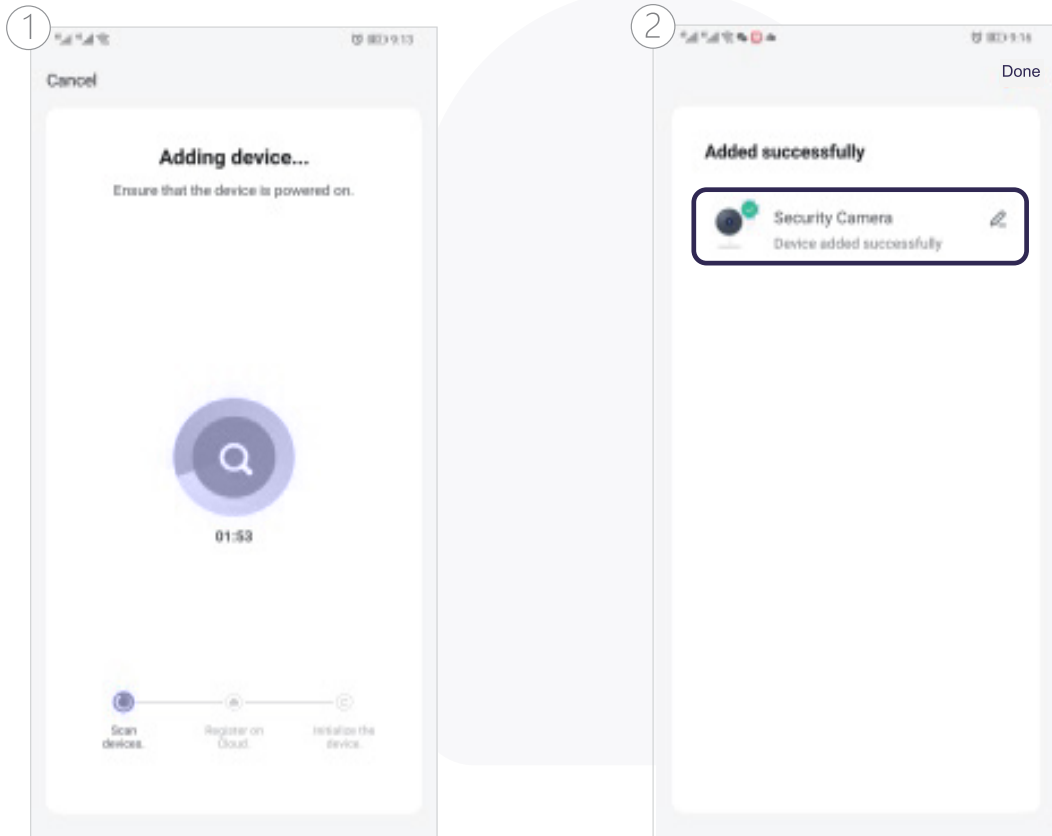
*Once the account has been setup successfully, then you will automatically enter the page of "add device", kindly follow below steps to add the camera.

Step 1: Click «Add device» or Click «+» on top of right on this page.



Step 2: Scan the QR Code on the Camera with your mobile phone, and after successfully pairing, it will prompt «added successfully»





Step 3: If you choose "the other mode " on the top of the right side, you may find QR Code Net-pairing Which you will go back to the "Add device" page and process it again like above procedure. Or you can choose "Smart configuration" and follow the below screenshots and after that you will see the device added successfully.

