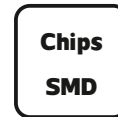
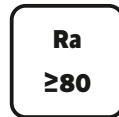



Ceiling Lamp

ME-ICL0501-30

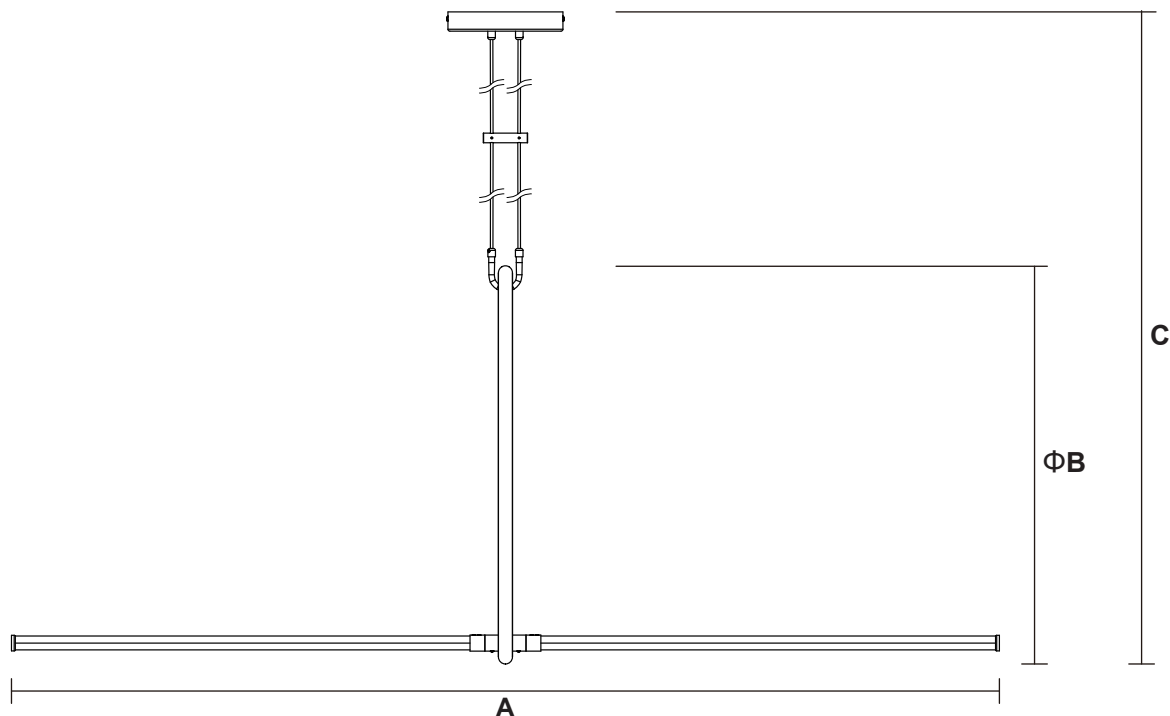
ME-ICL0502-30

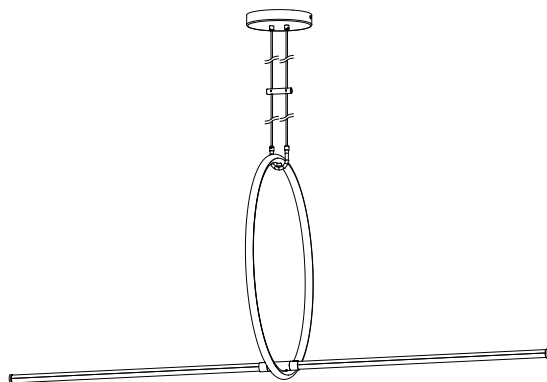
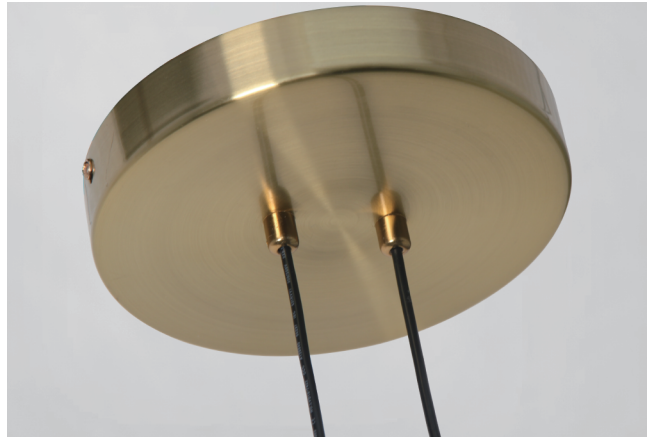
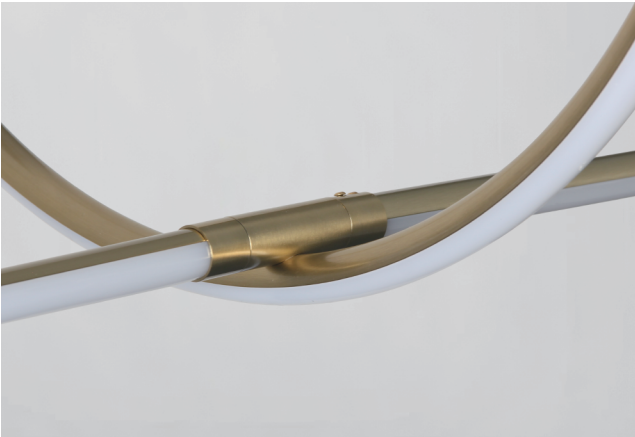
IP20



Model No	P (W)	CCT(K)	Color	Output (lm)	lm/w	Dimensions in mm			
						A	B	C	
ME-ICL0501-30	30	3000	Gold	1200	40	1500	Φ600	1500	2.0
ME-ICL0502-30	30	3000	Black	1200	40	1500	Φ600	1500	2.0

Dimensions in mm





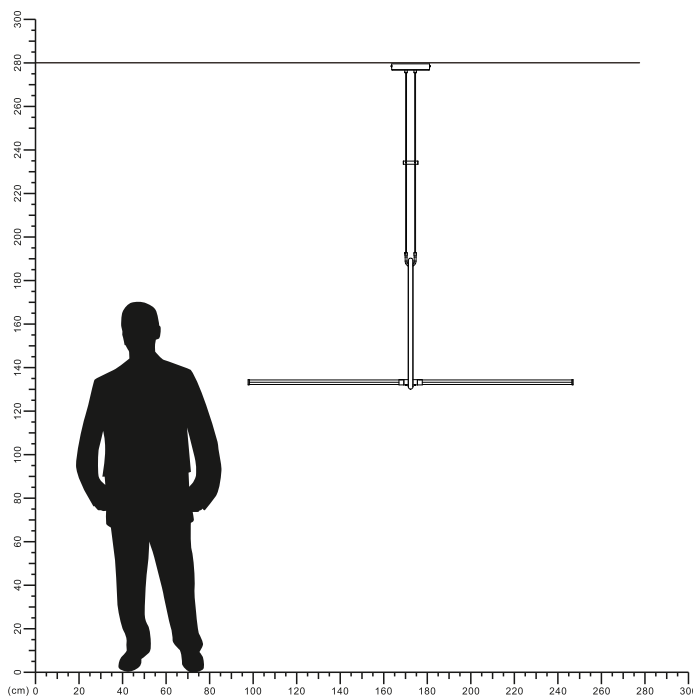
Description:
Ceiling Lamp

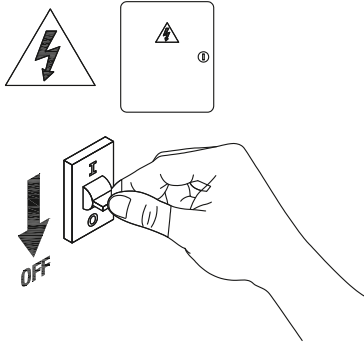
Main material:
Iron+Aluminum+silicone

Specification
Iron forged lamp body, sturdy and thickened in appearance, safe and durable under stress.
High quality aluminum, treated with spray painting technology, simple and fashionable.
High transparency silicone lampshade, with a delicate texture and soft light that is not dazzling.

IP 20

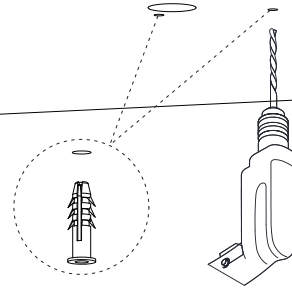
Applications
.Restaurant
.Bar counter





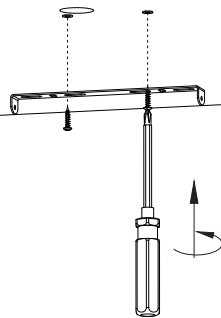
1

Turn off The Power



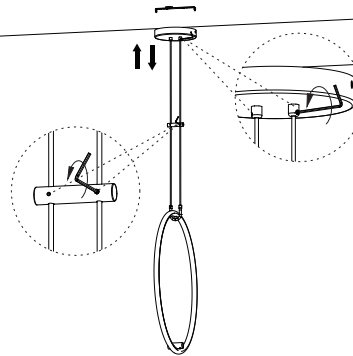
2

Drill holes in the ceiling insert expansion screws



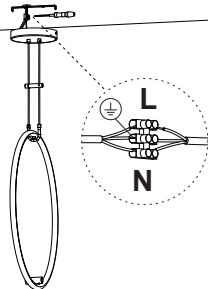
3

To install the hanging board



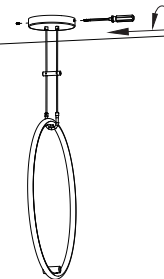
4

Turn the screw to adjust the length the wire and the position of the intermediate wiring pipe according to the use condition.



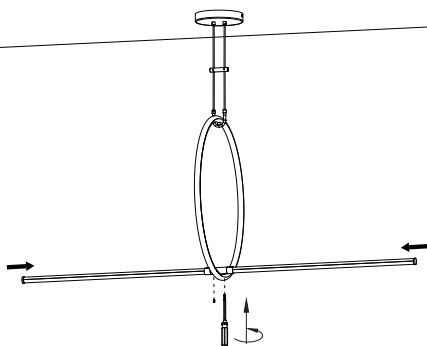
5

connect the cable



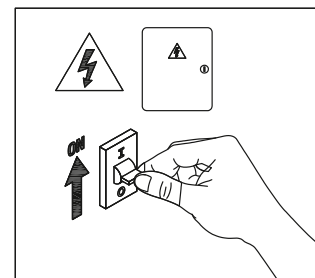
6

Install the ceiling lamp on the base plate



7

Tighten the screws fixed lamp tube Installati on completed



8

Turn on the power

