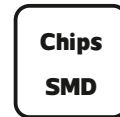
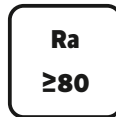


Ceiling Lamp

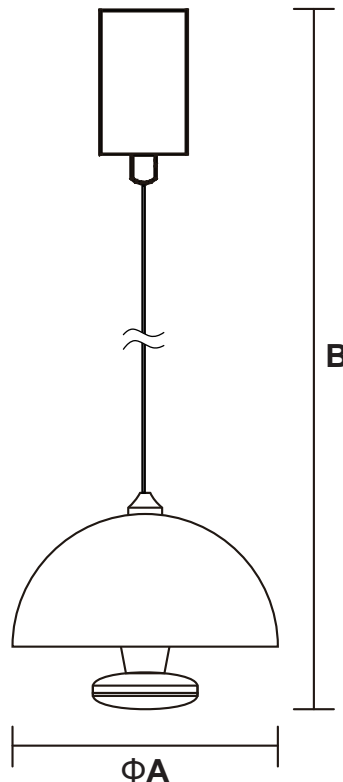
ME-ICL0103-6

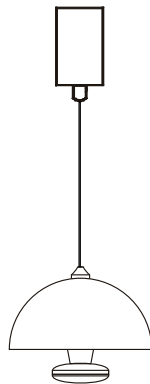
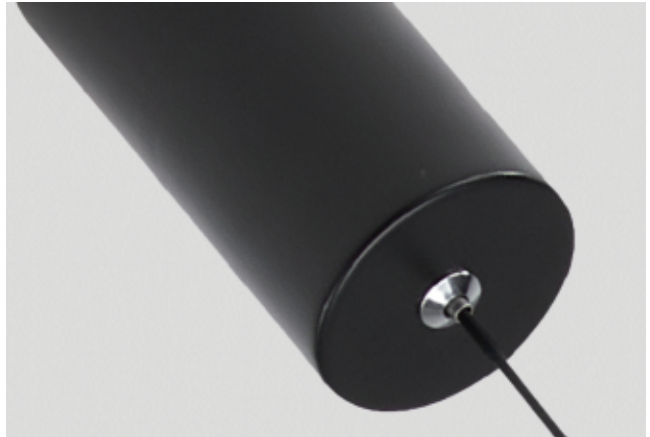
IP20



Model No	P (W)	CCT(K)	Color	Output (lm)	lm/w	Dimensions in mm		
						A	B	kg
ME-ICL0103-6	6	3000/4000/5000	Black	180	30	Φ180	1500	0.6

Dimensions in mm





Description:

Ceiling Lamp

Main material:

Iron+Acrylic

Specification

Metal wrought iron lamp body, anti-corrosion and rust-proof, durable.
High transmittance acrylic lampshade, soft light transmission and uniform light.

IP 20

Applications

.Living room
.Bedroom
.Study

