

LED Ceiling Lamp

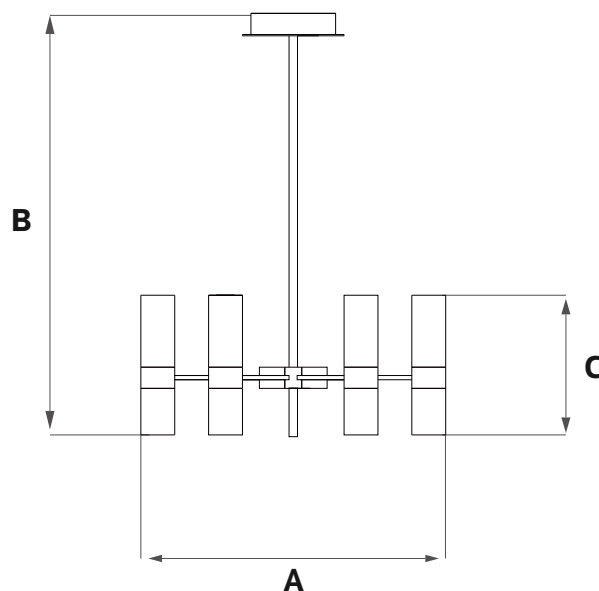
ME2035A

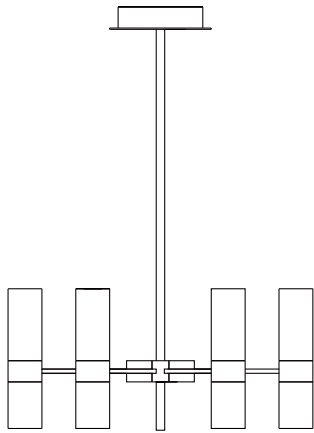
IP20



Item Code	Socket	Dimensions in mm			kg
		A	B	C	
ME2035A	G9*12	720	720	330	7.3

Dimensions in mm





Description:
LED Wall Lamp

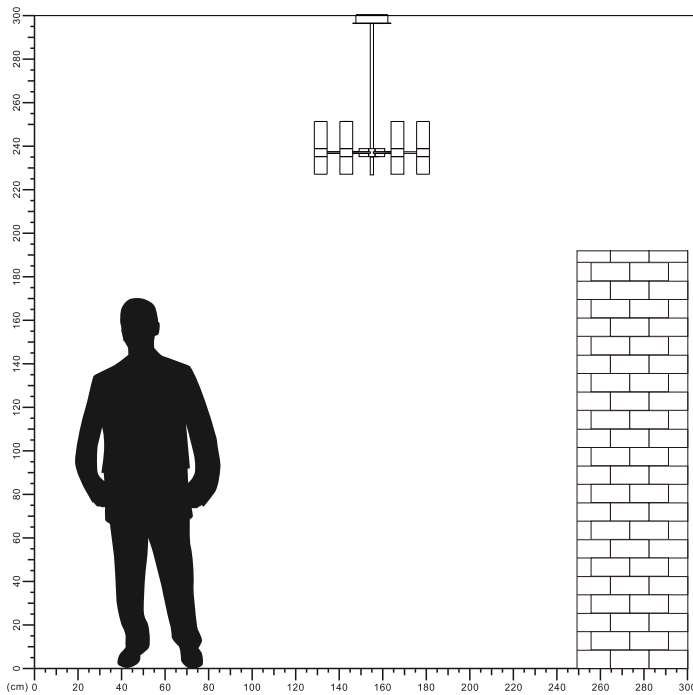
Main material:
Natural stone+Glass+Iron

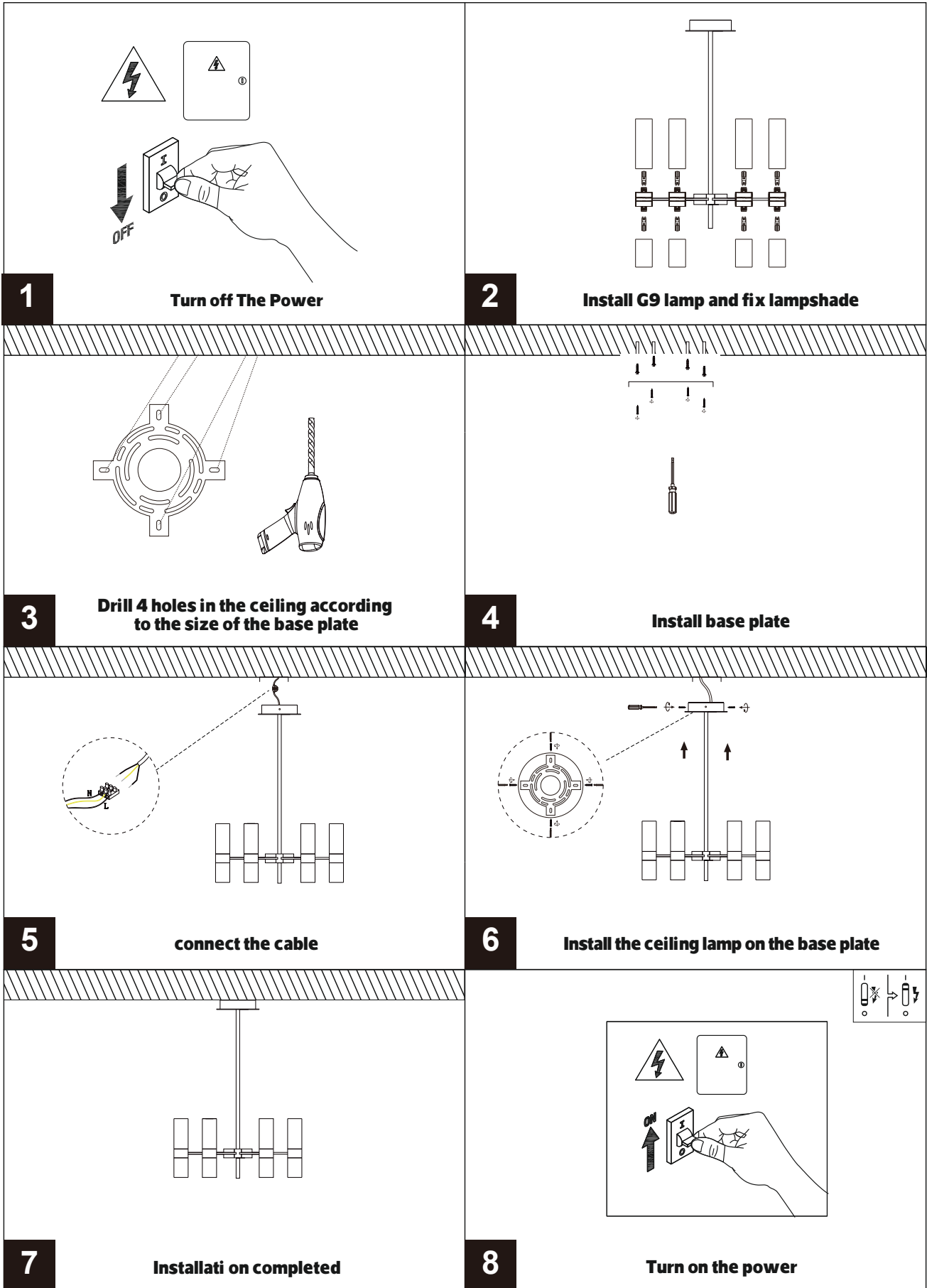
Specification

Special tree branch shape appearance, simple but full of personality and creative, randomly match the scene.
IP20

Applications

- . Hotel
- . Drawing room
- . Corridor





1

Turn off The Power

2

Install G9 lamp and fix lampshade

3

Drill 4 holes in the ceiling according to the size of the base plate

4

Install base plate

5

connect the cable

6

Install the ceiling lamp on the base plate

7

Installati on completed

8

Turn on the power

