

PIR Motion Detector Alarm



- Working Voltage**
DC3V
- Static Current**
30uA
- Transmitting Current**
35mA
- Detection Distance**
12M
- Detection Angle**
110°
- IP Rate**
IP22
- Battery Type**
2*AAA
-
-
-

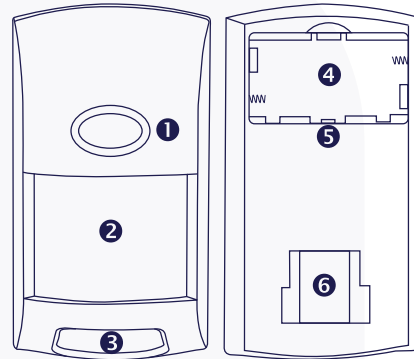
Item Code	Color	Material	Wi-Fi	Installation Method	Anti-White Light Intensity	Pet-Immune Function	
MS-PS102-WH	White	Plastic + PCB	IEEE 802.11 B 2.4GHz	Wall	10000Lux	≤25KG	0.06

Dimensions in mm



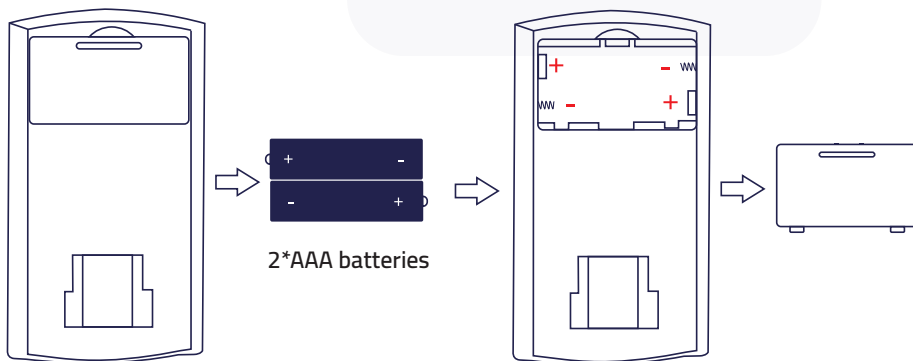
Product Diagram

- ① LED Lights
- ② Front detection window
- ③ Lower window detection window
- ④ Battery bay
- ⑤ Connection key
- ⑥ Fixing mouth of the bracket

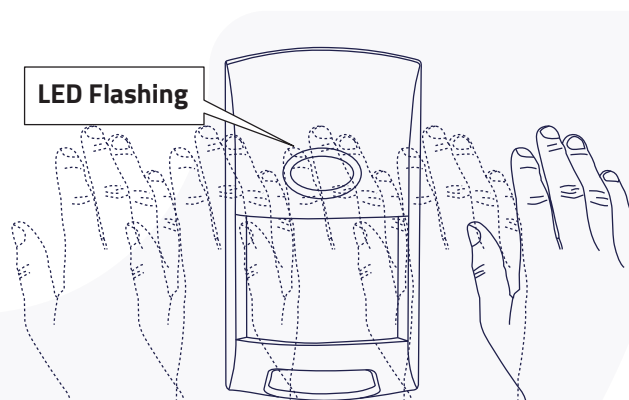


First Use

Step 1 : Install the Battery

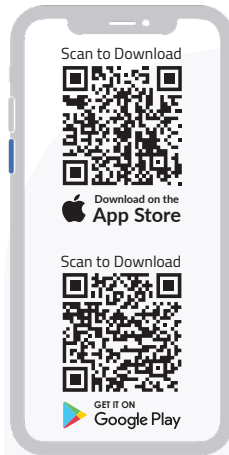


Step 2 Trigger an Alarm :



Download & Register

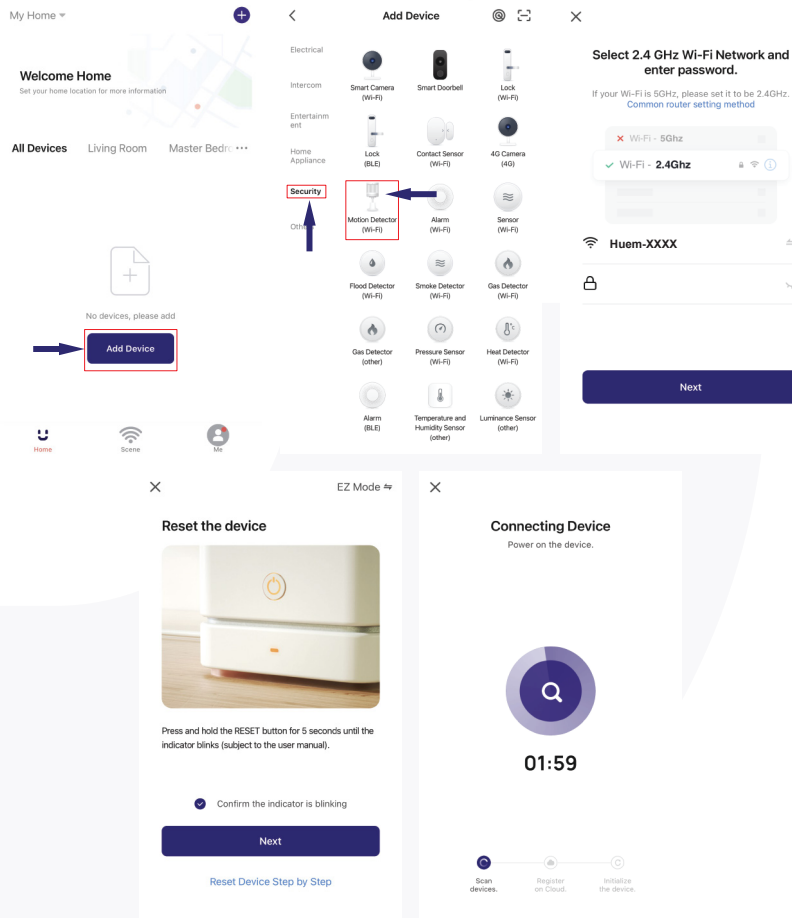
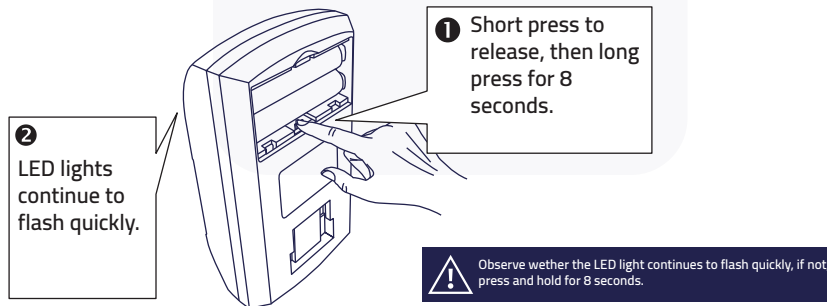
Step 1 Download : Download "Huem" by App Store or Google Play store, or scan below QR code to download it.




Add Device

Network configuration with mobile phone (Two Methods) :

Method 1: Wi-Fi quick connect.



Method 2: Hotspot distribution network.




① Short press to release, then long press for 8 seconds.

② LED lights continue to flash quickly.

Observe whether the LED light continues to flash slowly, if it is not flashing slowly, press and hold for another 8 seconds.

Reset the device



Press and hold the RESET button for 5 seconds until the indicator blinks (subject to the user manual).

Confirm the indicator is blinking slowly.

Next

Reset Device Step by Step

Connect your mobile phone to the device's hotspot

Connect your phone to the hotspot shown below:

WLAN

✓ Huem-XXXX

Go back and add devices.

Go to Connect

Installation Guide

