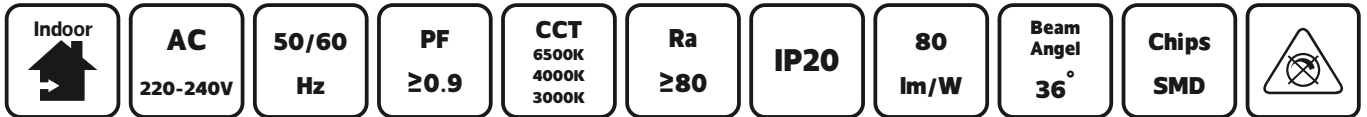


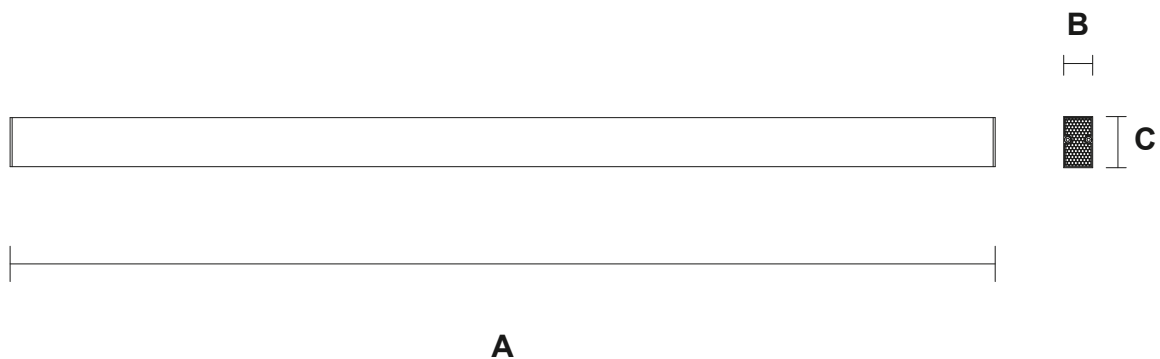
LED Line Light

NR-AL102-20-ANTI
IP20



Item Code	P(W)	Color	CCT(K)	Total Lumen	Beam Angle	Dimensions in mm			kg
						A	B	C	
NR-AL102-20-WH-ANTI	20	White	6500/4000/3000	1600	36°	1204	33	60	1.35
NR-AL102-20-BK-ANTI	20	Black	6500/4000/3000	1600	36°	1204	33	60	1.35

Dimensions in mm





High quality aluminum shell, paint process



High quality LED chips.
Low energy consumption

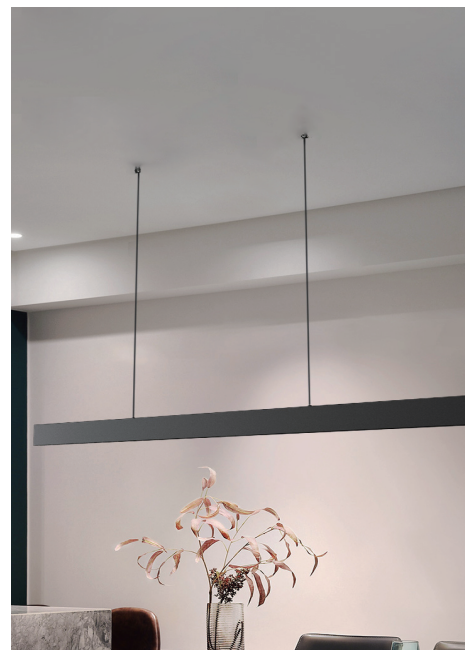
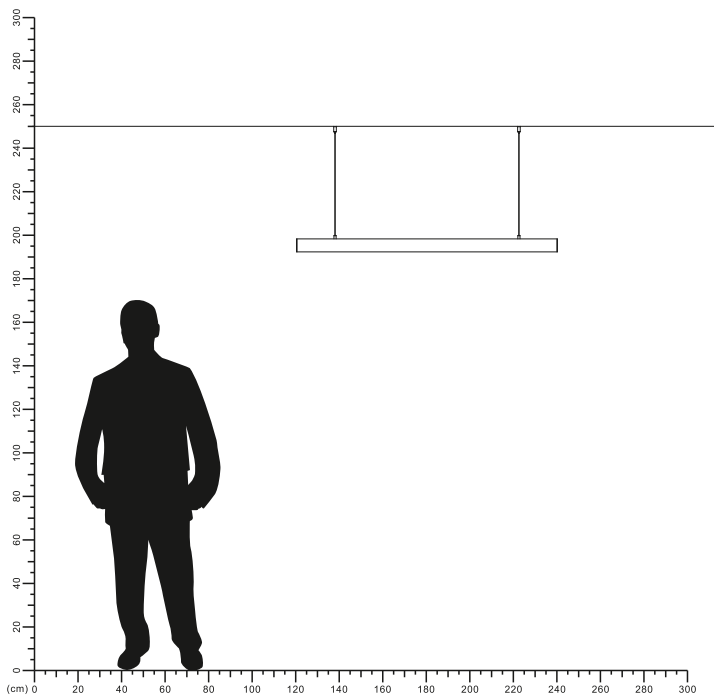


Description:
LED Line Light
Construction

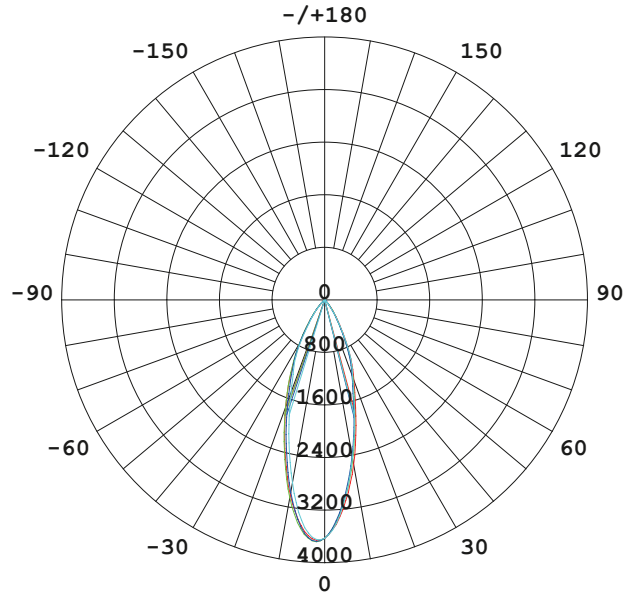
Main material:
High-grade die-cast aluminum shell, high quality reflective cup and anti-glare components, efficient heat dissipation at the bottom, powder spraying treatment on the surface, anti-corrosion, anti-rust, no fading, fashion modeling

Specification:
Energy saving, upto 85% energy saving comparing to standard halogen and incandescent lamps Long life, upto 50,000 hours High quality light, high color rendering, less heat, no UV or IR radiation

Applications
Shopping mall
Office buildings
Exhibition hall



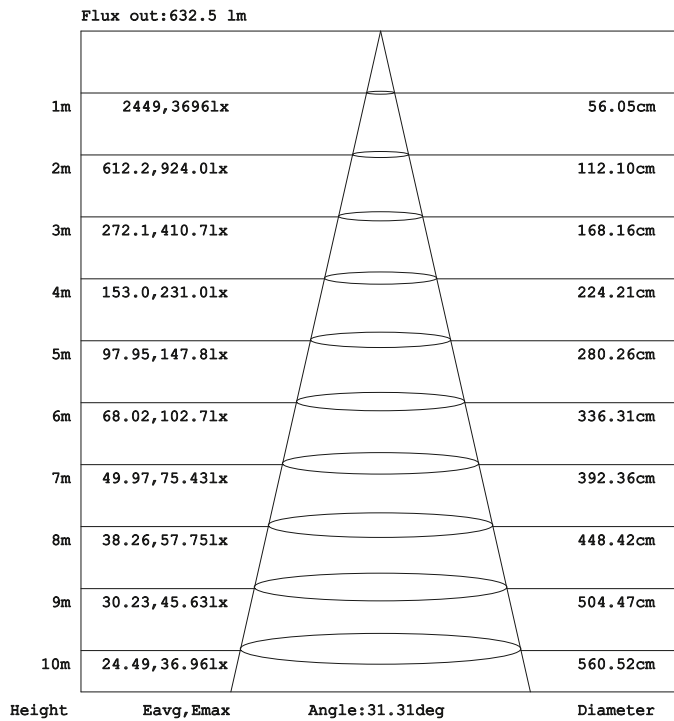
LUMINOUS INTENSITY DISTRIBUTION DIAGRAM

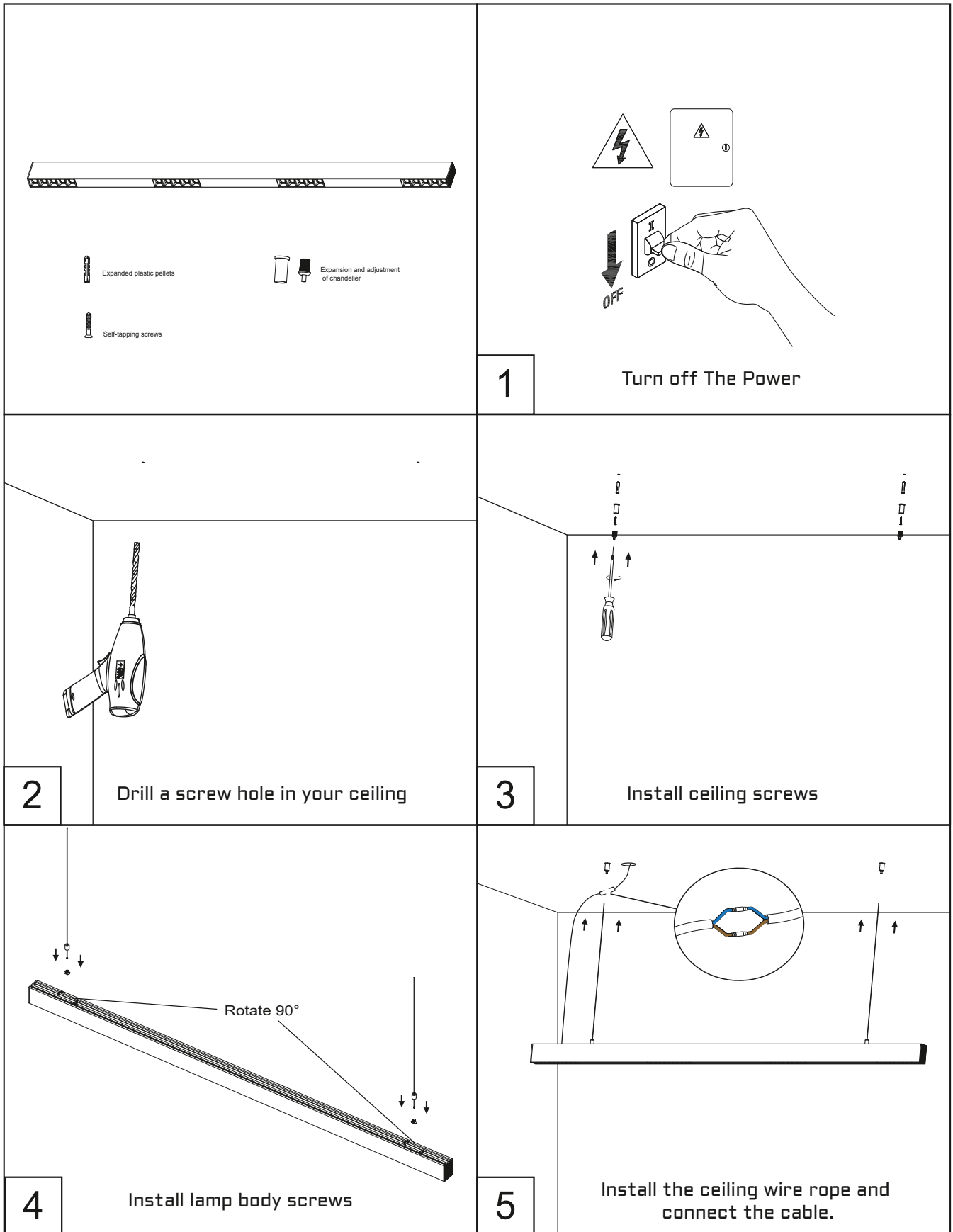


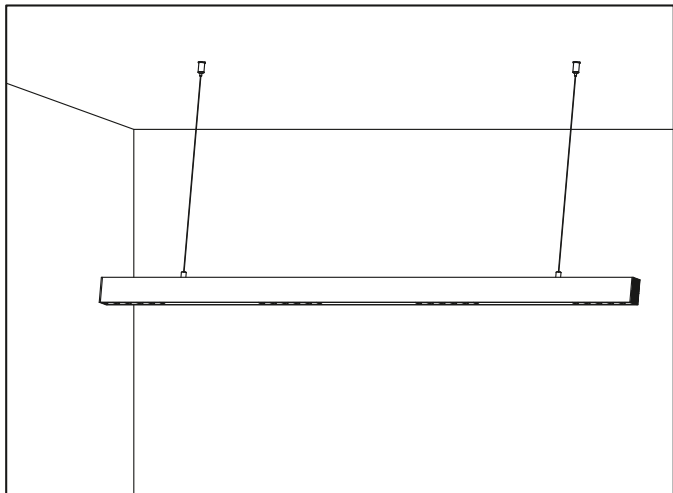
- UNIT: cd**
- C0/180, 34.2
 - C30/210, 33.6
 - C60/240, 32.4
 - C90/270, 31.6

AVERAGE BEAM ANGLE (50%) : 33.0 DEG

Illuminance at a Distance





 <p data-bbox="114 739 790 831">6 Installation complete.</p>	
--	--

