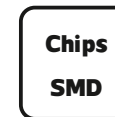
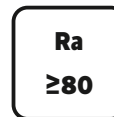
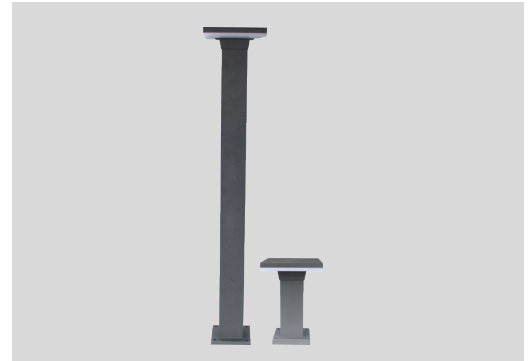


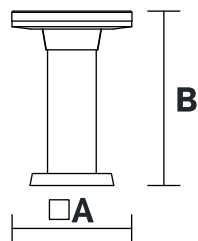
LED OUTDOOR LAWN LAMP

NR-BD101-10 S WW
NR-OLL0502-10
IP65

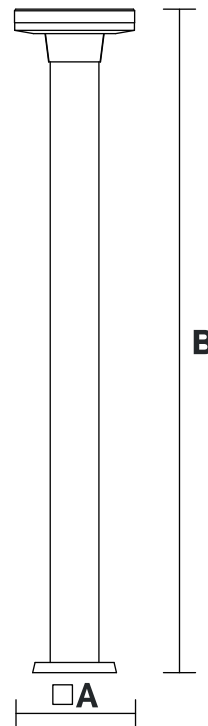


Model No	P (W)	CCT (K)	Beam Angel	Output (lm)	lm/w	Dimensions in mm A B		kg
NR-BD101-10 S WW	10	3000	120°	400	40	□150	220	0.92
NR-OLL0502-10	10	3000	120°	500	50	□150	800	1.82

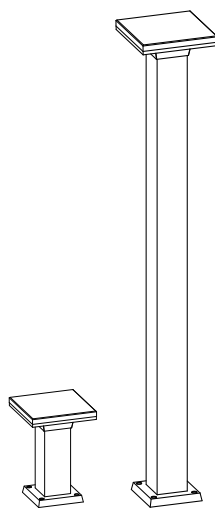
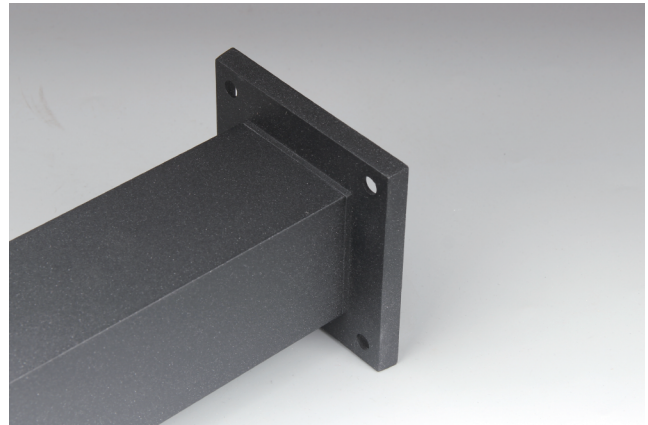
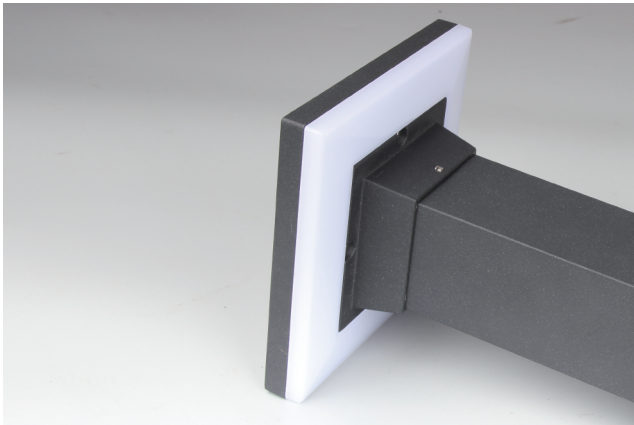
Dimensions in mm



Model No:NR-BD101-10 S WW



Model No:NR-OLL0502-10



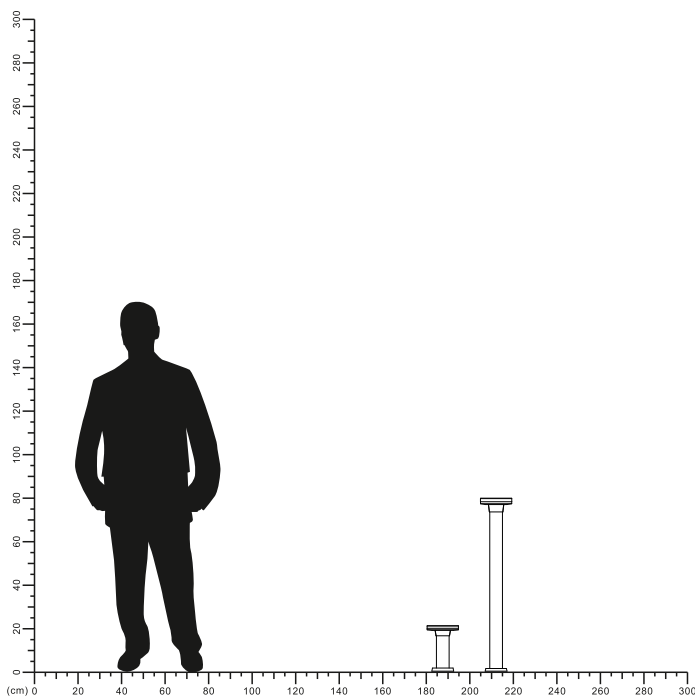
Description:
LED OUTDOOR LAWN LAMP

Main material:
Aluminum+Pc

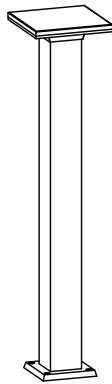
Specification
Aluminum lamp body integrated die-casting molding, spraying process, fine work, waterproof and dustproof. High light transmission PC material lamp shade, bright and not dazzling, anti-aging, long service life. IP65

Applications

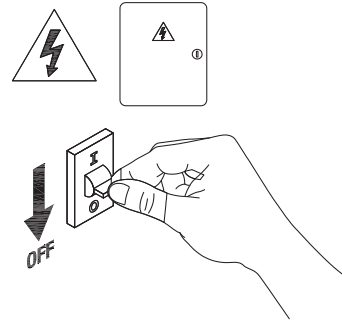
- . Park
- . Square
- . Tourist attraction
- . Corridor



1



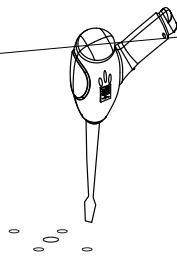
2



Turn off the power

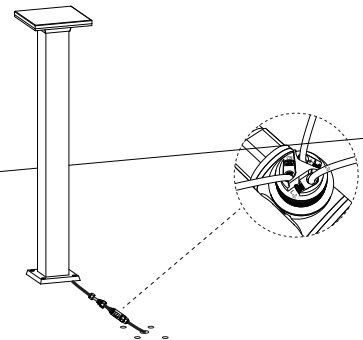
3

Drill holes in the ground according to the position of the base screw holes



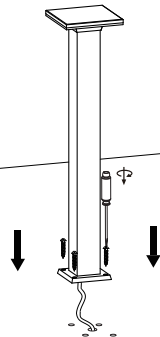
4

Wiring with waterproof terminals



5

Fixing the lamp body



6

Installation completed



7

Turn on power

