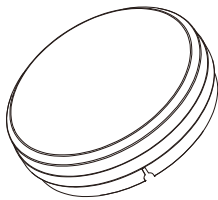


# NOORCO

## Emergency LED Panel Light



### Product benefits & features:

- 1. Emergency Power Supply:** Features an integrated high-quality battery as a backup power source, capable of supporting the luminaire to provide continuous illumination for a period following a failure of the primary power supply. The specific duration of this emergency lighting depends on the product model and the capacity of the battery.
- 2. Lighting Performance:** Offers excellent lighting performance with a moderate brightness level that provides adequate visibility in dark environments, thus fulfilling the requirements for emergency lighting purposes.
- 3. Dust and Waterproof Rating:** In consideration of specific environments like outdoor areas or damp locations, emergency lights may come with a high dust and water ingress protection rating, ensuring their ability to function effectively even under adverse conditions.
- 4. Longevity and Energy Efficiency:** Utilizing LED light sources, compared to traditional lamps, these lights offer higher energy efficiency and longer lifespans, simultaneously reducing maintenance costs.

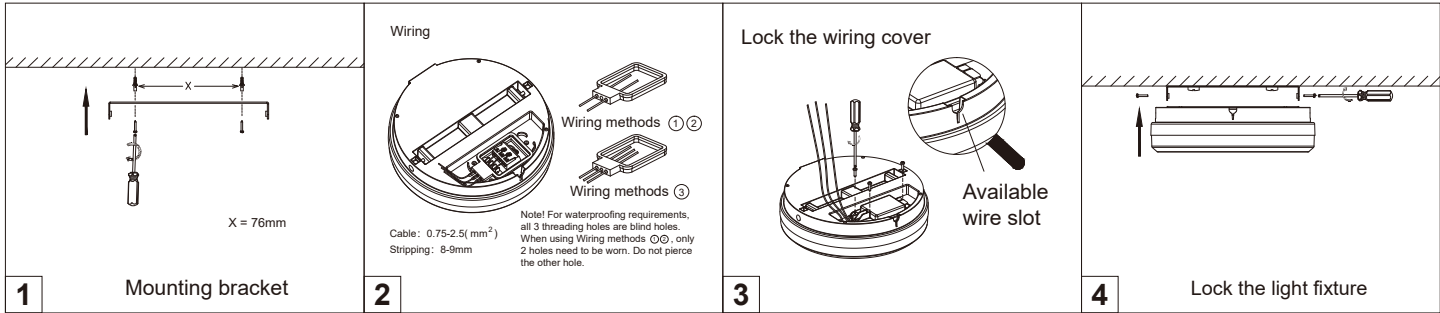
### Areas of application:

underground passage, stairwell, corridor

### Caution:

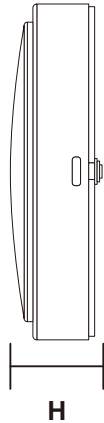
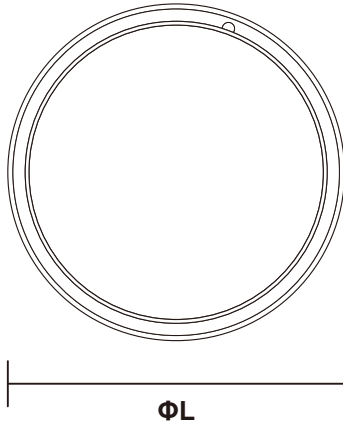
- 1. Power Connection:** The connection between the main power cable and the luminaire's wiring should be secure and reliable, ensuring there are no exposed conductors. Adequate insulation must be provided. Ensure that the switching mechanism between the normal power supply and the backup power supply (battery) functions correctly. The luminaire should be grounded according to regulations to guarantee electrical safety.
- 2. Waterproof and Dustproof Measures:** For environments with high humidity or substantial dust, choose emergency luminaires with the appropriate ingress protection (IP) rating and ensure proper sealing during installation.
- 3. Periodic Inspection and Maintenance:** Upon completion of installation, perform functional testing to confirm that the luminaire switches automatically to the backup power supply and operates normally when the main power supply is interrupted. Regularly carry out cleaning of the luminaires, inspection and replacement of batteries if necessary, as well as functional tests as part of the maintenance routine, to ensure that the emergency lighting system remains in good working condition at all times.

### Product Installation and Wiring Diagram



### Product Specifications and Dimensions

Item Code:	NR-EM106S-15W-3H-6500K-IP65
Input:	AC220-240V 50/60Hz
Power:	15W
Lumen Output:	900lm
CCT:	6500K
Charging Time:	≤24h
Emergency Duration:	≥3h
IP rated:	IP65
ΦLxH(mm):	Φ220X61



ta:40°C IP65

Customer Service Center.8004300030

Made in China  
صنع في الصين

