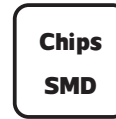
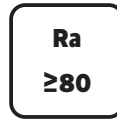
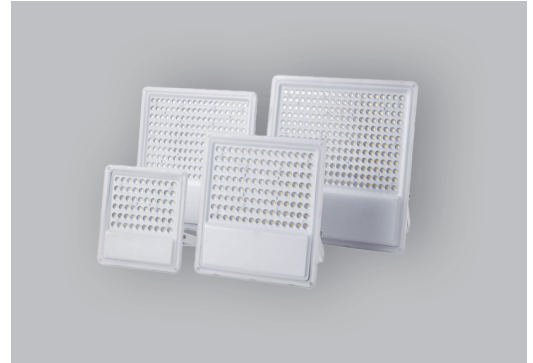


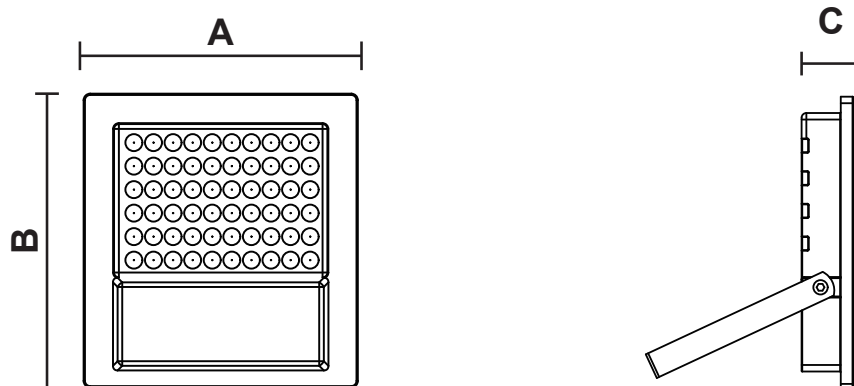
## LED Outdoor Flood Lamp

NR-FL103S-50 Series  
IP65



Item Code	P(W)	CCT(K)	Total Lumen	LM/W	Beam Angle	Dimensions in mm			kg
						A	B	C	
NR-FL103S-50	50	6500/4000/3000	5360	107.2	60°	225	210	45	1.2
NR-FL103S-100	100	6500/4000/3000	10600	106	60°	320	285	50	2.3
NR-FL103S-150	150	6500/4000/3000	17000	113.3	60°	375	335	50	3.4
NR-FL103S-200	200	6500/4000/3000	20600	103	60°	412	382	60	4.6

### Dimensions in mm

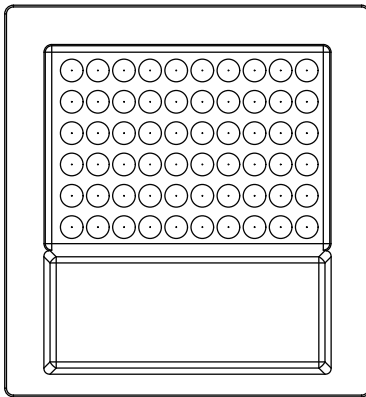




Aluminum die-casting molding, strong and durable, the surface treatment of the lacquer that bake, anticorrosive anti rust



Thorns heat dissipationTechnology of air convection, the heat dispersion of the LED chip, chip temperature stable

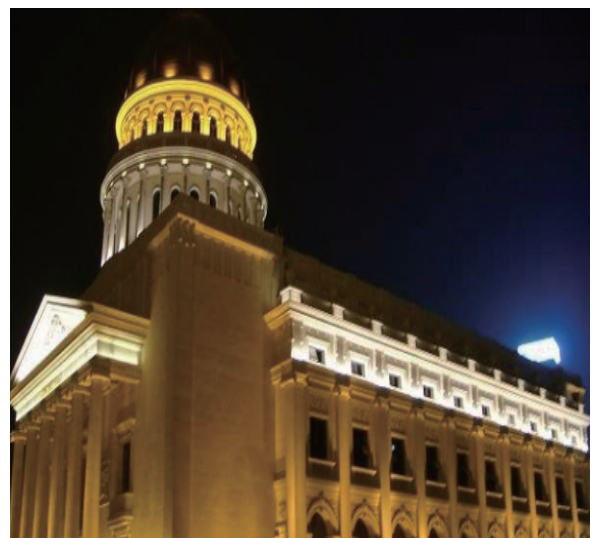
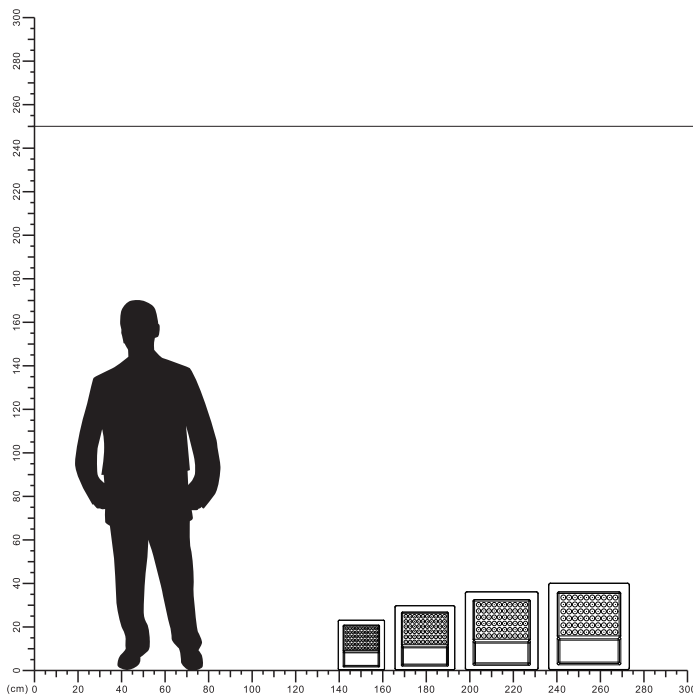


**Description:**  
LED Outdoor Flood Lamp

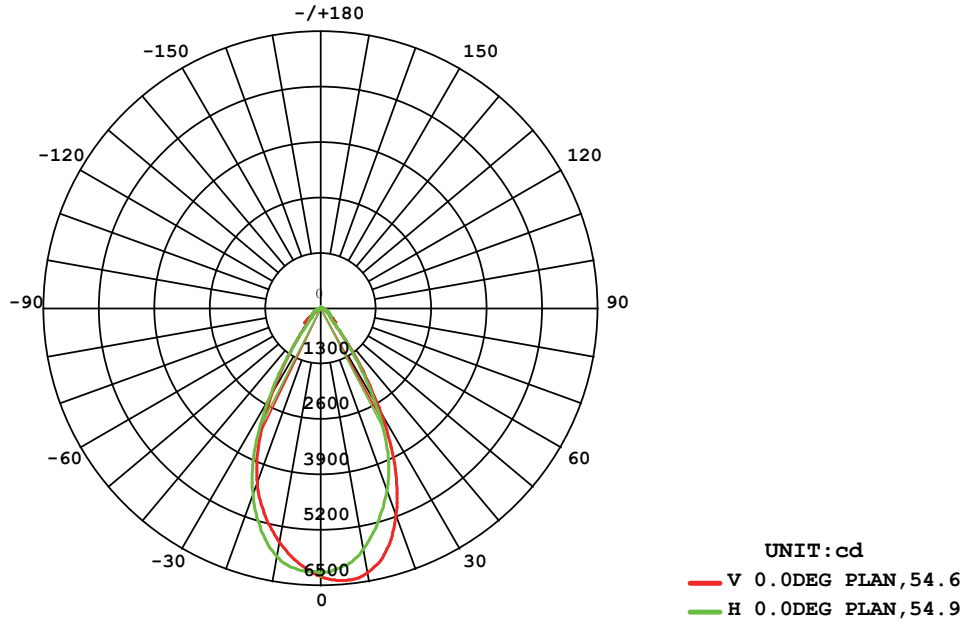
**Main material:**  
.Die- cast aluminum,Engineering plastic+glass

**Specification**  
.Energy saving, up to 85% energy saving comparing to standard halogen and incandescent lamps  
.High quality light, high color rending, lessheat,no UV or IR radiation  
.LED driver is included  
IP65

**Applications**  
.Lawn  
.Garden  
.Building external wall

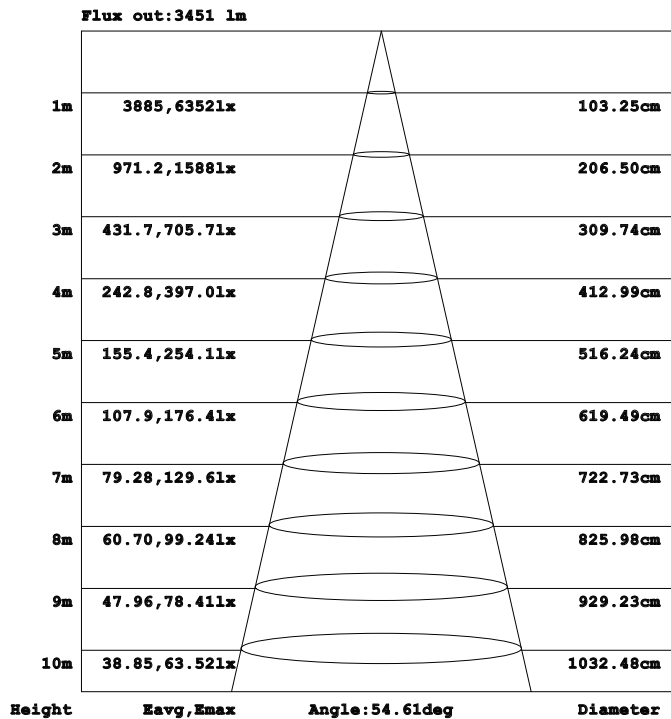


# LUMINOUS INTENSITY DISTRIBUTION DIAGRAM



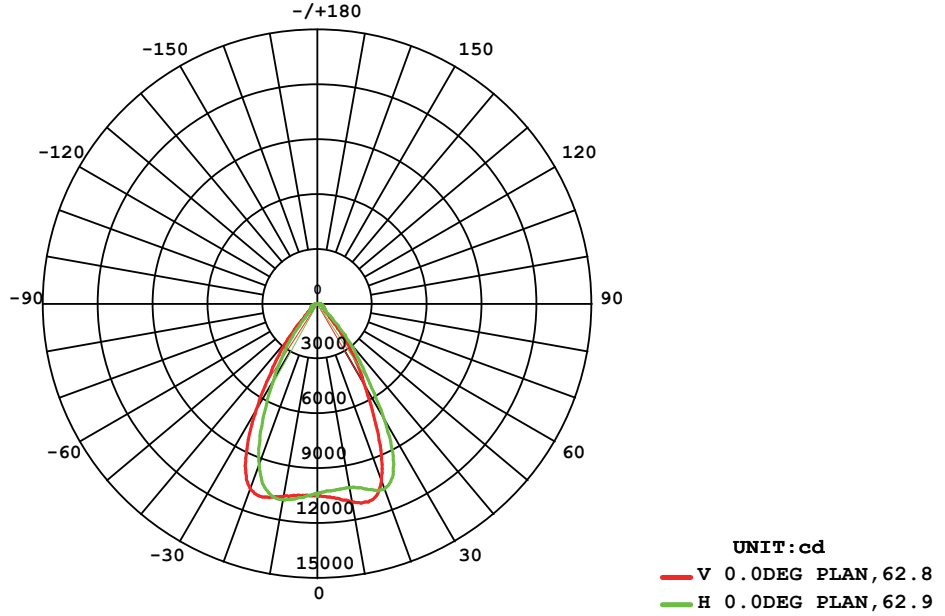
**AVERAGE BEAM ANGLE (50%) : 54.8 DEG**

## Illuminance at a Distance



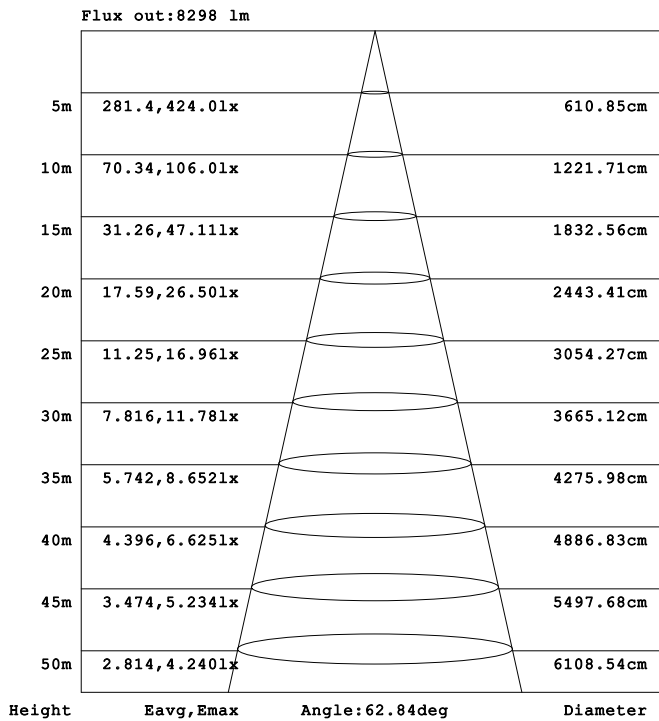
**Model:NR-FL103S-50**

# LUMINOUS INTENSITY DISTRIBUTION DIAGRAM



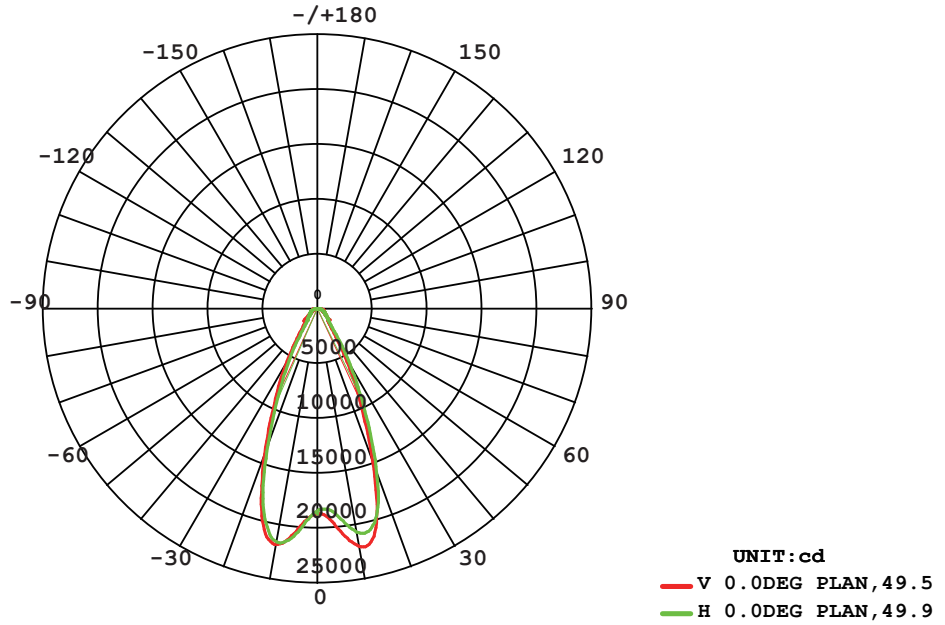
**AVERAGE BEAM ANGLE (50%) : 62.9 DEG**

## Illuminance at a Distance



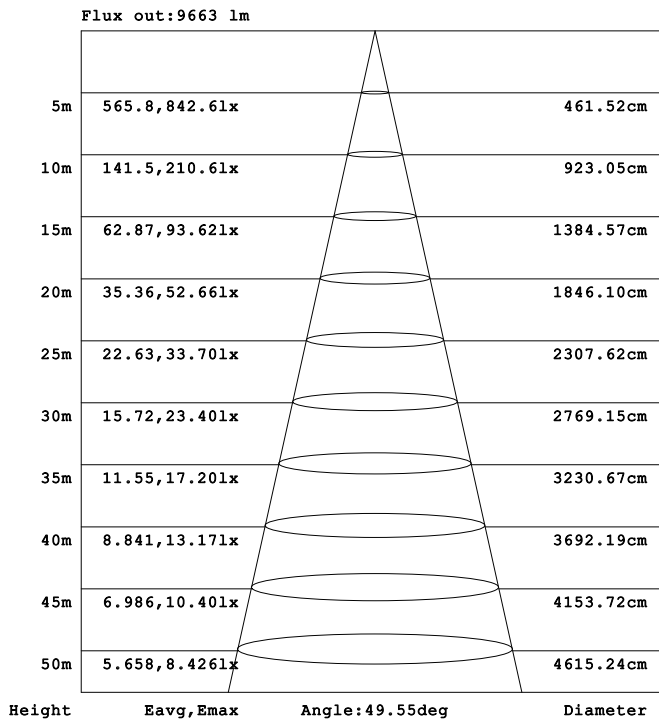
**Model:NR-FL103S-100**

# LUMINOUS INTENSITY DISTRIBUTION DIAGRAM



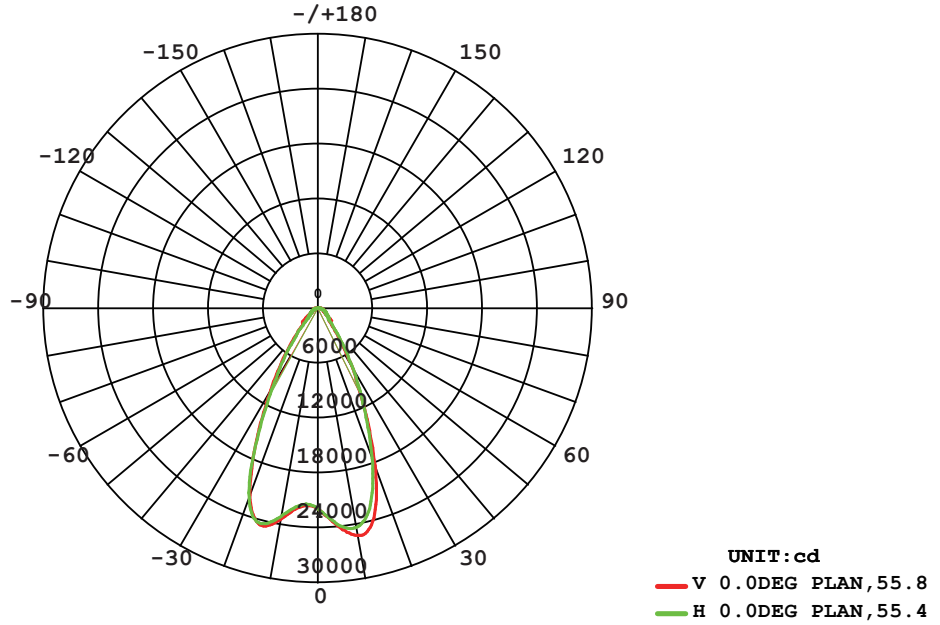
**AVERAGE BEAM ANGLE (50%) : 49.7 DEG**

## Illuminance at a Distance



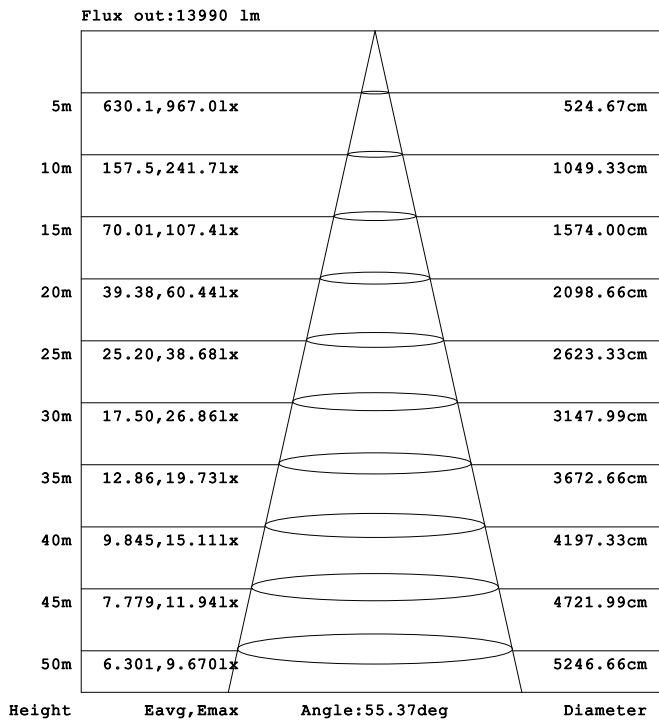
**Model: NR-FL103S-150**

# LUMINOUS INTENSITY DISTRIBUTION DIAGRAM

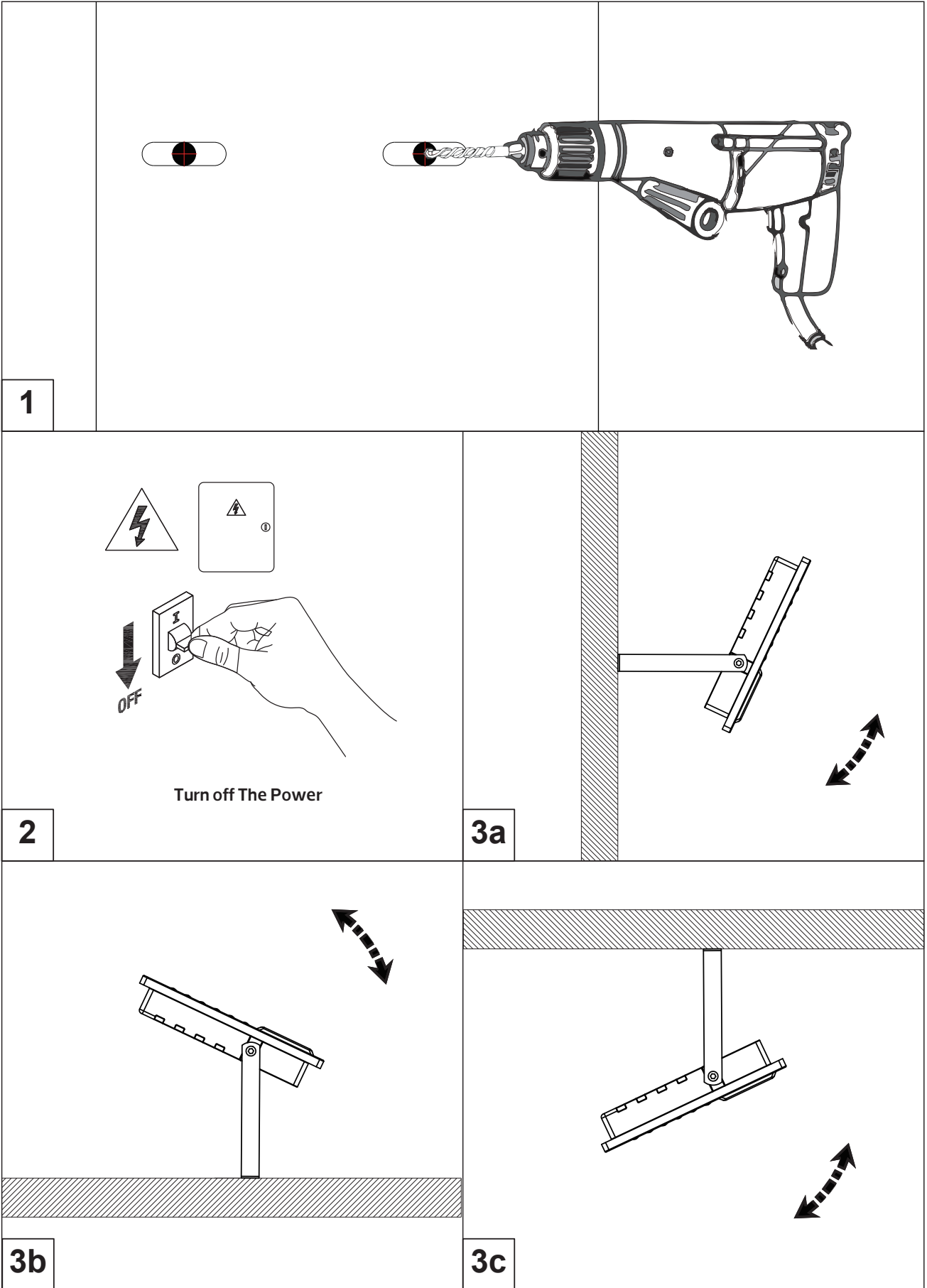


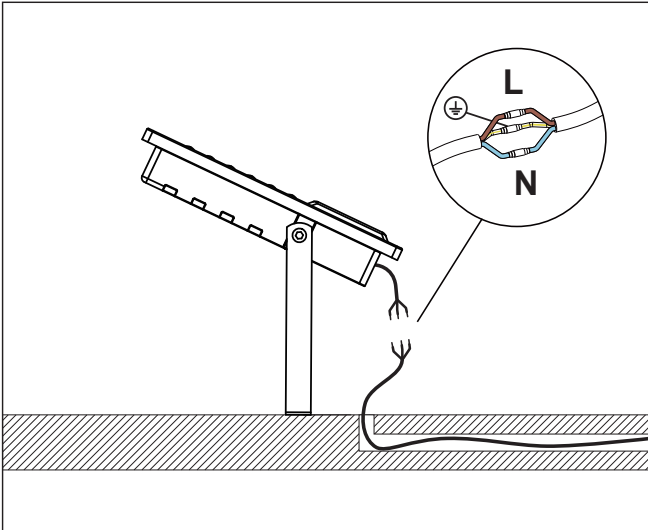
**AVERAGE BEAM ANGLE (50%) : 55.6 DEG**

## Illuminance at a Distance

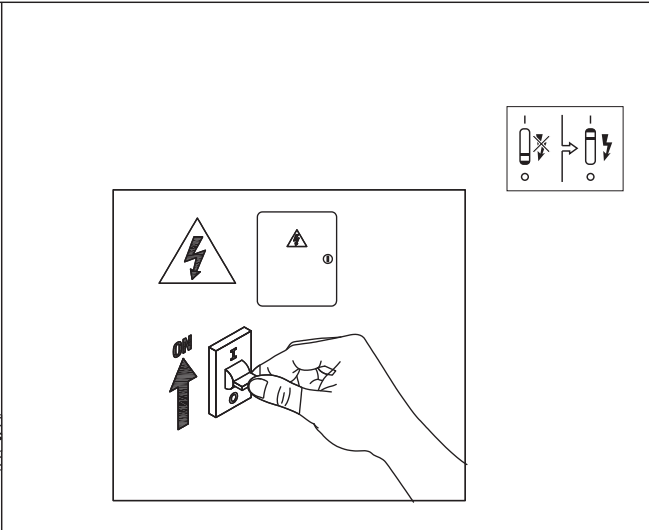


**Model: NR-FL103S-200**





4



5



6

