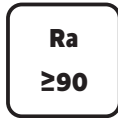
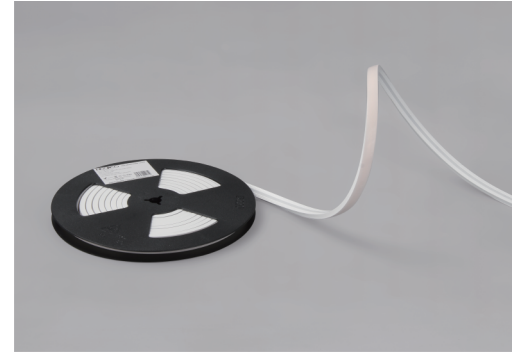


LED Neon Strip Light

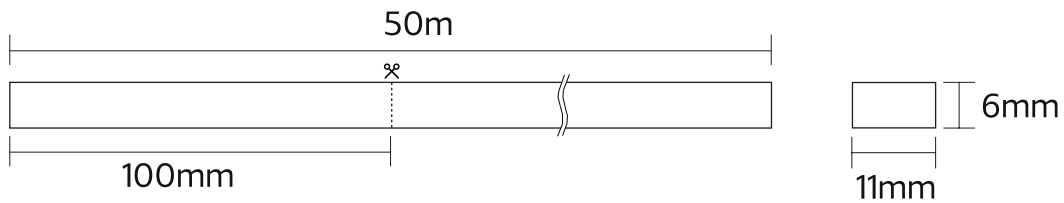
NR-NE24COB-1106-10W

IP65



Item Code	Input Voltage	Watt	CCT	IP	Beam Angle	Ra	Lm/M	Cutting	LED Type	LED QTY
NR-NE24COB-1106-10W	DC24V	10W/M	3000K/4000K	IP65	120°	≥90	400lm/m	100mm	COB	120Pcs

Dimensions in mm





Description:

LED Neon Strip Light

Main material:

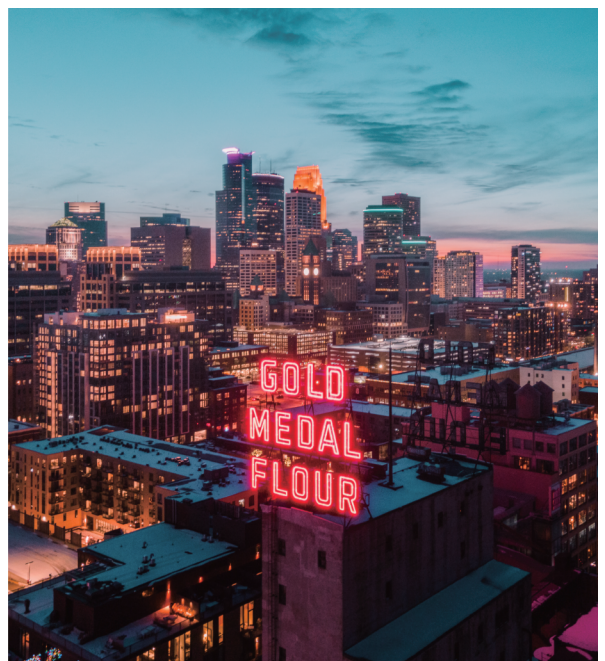
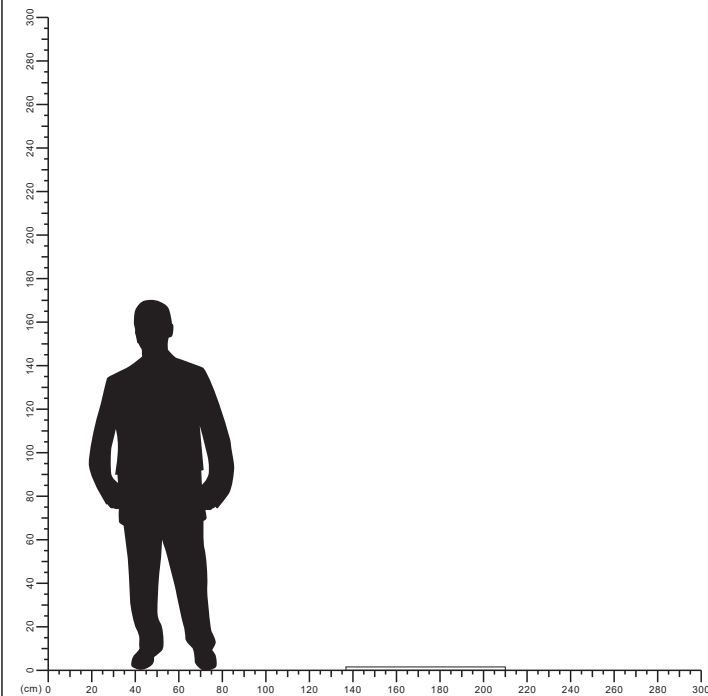
Silica gel

Specification:



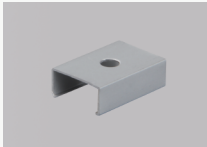

Energy saving, up to 85% energy saving comparing to standard halogen and in candescent lamps Long life, up to 30,000 hours High quality light, High color rending, less heat.

Applications

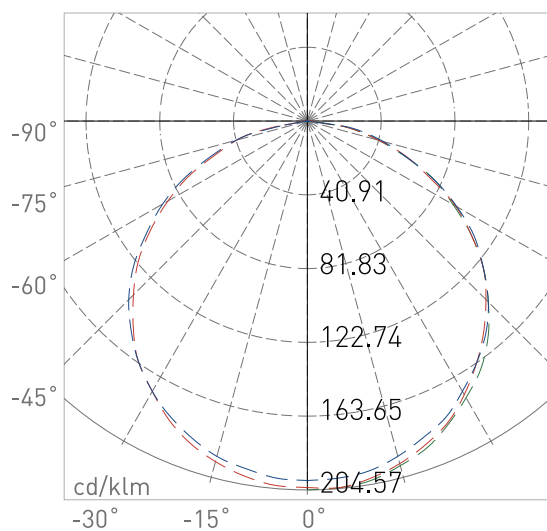
- .Signboard
- .The ceiling
- .Building external wall



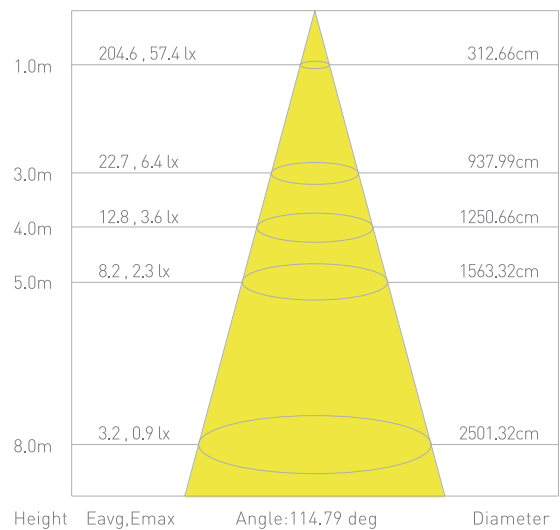
Accessories

Picture	Item Code	Size
	NR-NE24-COB1106-CONNECT	17*12
	NR-NE24-COB1106-CLIPS-MOV	7*12
	NR-NE24-COB1106-CLIPS	7*12
	NR-NE24-COB1106-CAP	7*10

POLAR AND CONE DIAGRAM



PHOTOMETRIC OF 1M STRIP



LED Strip Power Supply

Item Code	Input Voltage(AC)	Input Current(A)	Output Voltage(DC)	Output Current(A)	IP	Watt
NRP-PS102-FliKer-24V-150W-IP65	100-240V	1.5A	24V	6.3A	65	150
NRP-PS102-FliKer-24V-400W-IP65	180-240V	2.2A	24V	16.7A	65	400



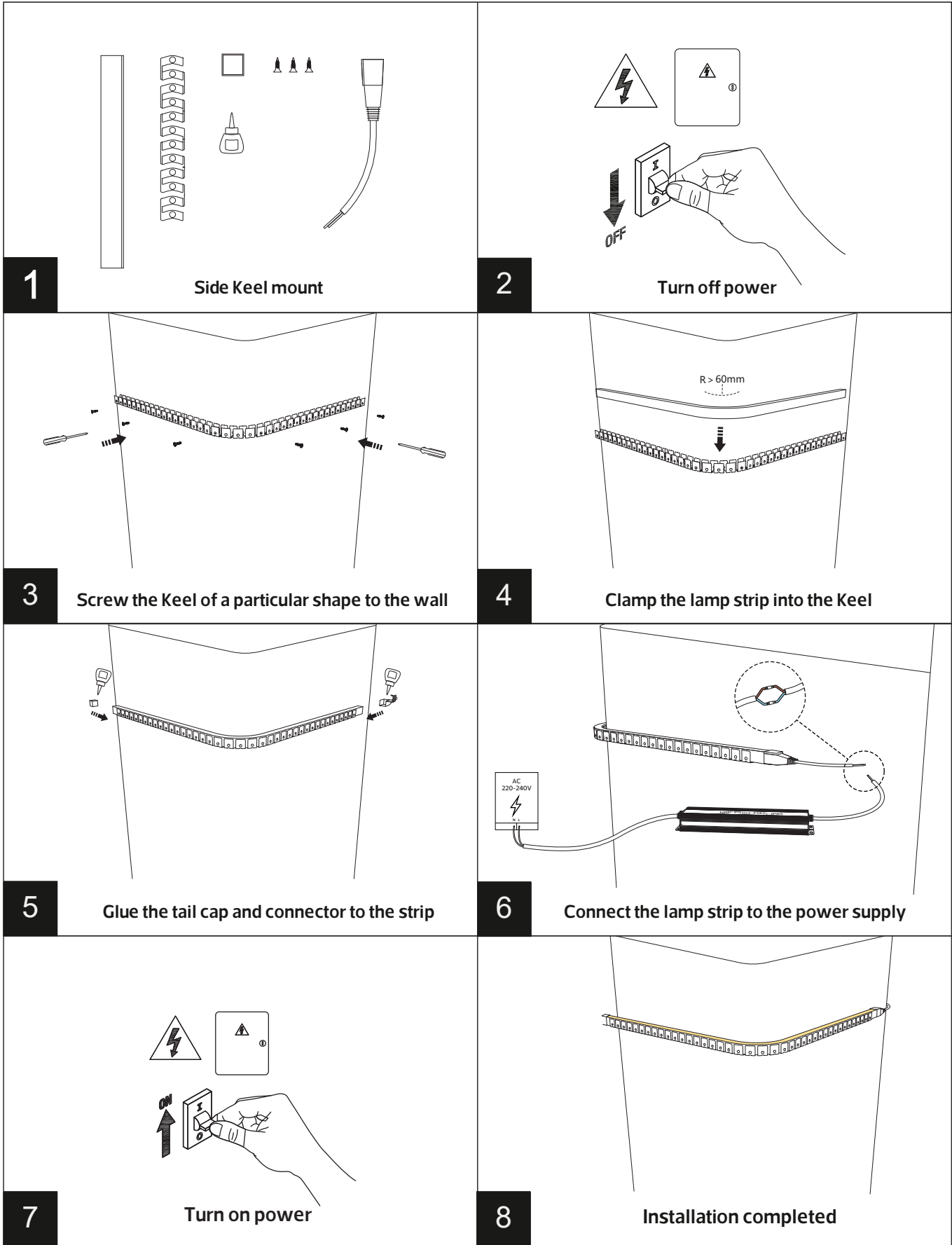
NOTE:the power supply should not exceed 80% of the rated power for long periods of time!

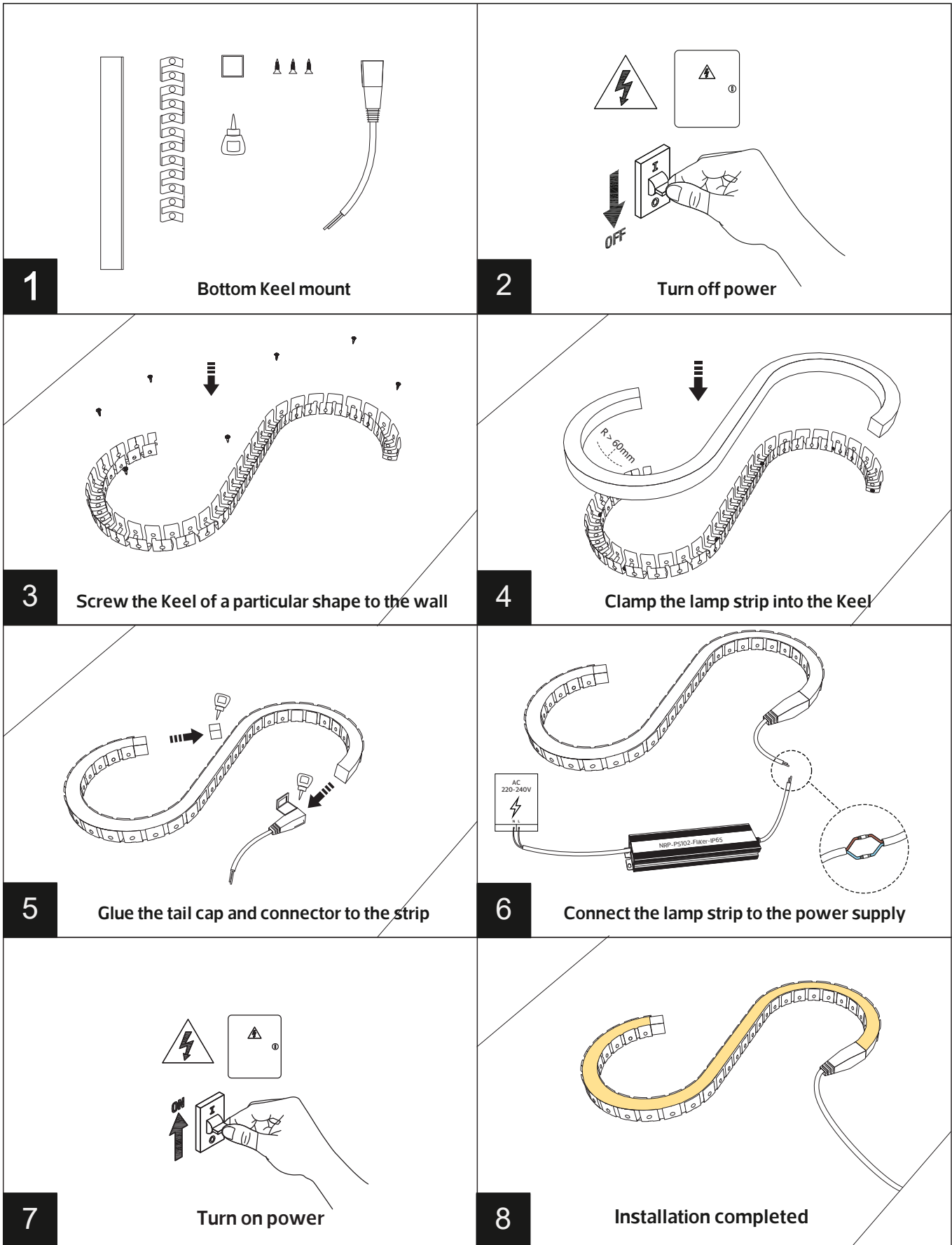


NRP-PS102-FliKer-24V-150W-IP65



NRP-PS102-FliKer-24V-400W-IP65





1

Bottom Keel mount

2

Turn off power

3

Screw the Keel of a particular shape to the wall

4

Clamp the lamp strip into the Keel

5

Glue the tail cap and connector to the strip

6

Connect the lamp strip to the power supply

7

Turn on power

8

Installation completed

