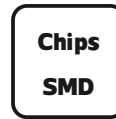
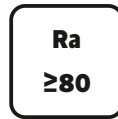
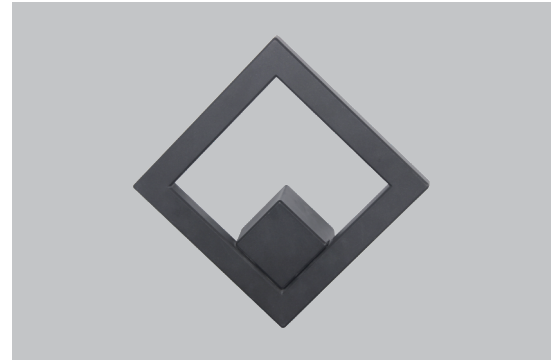



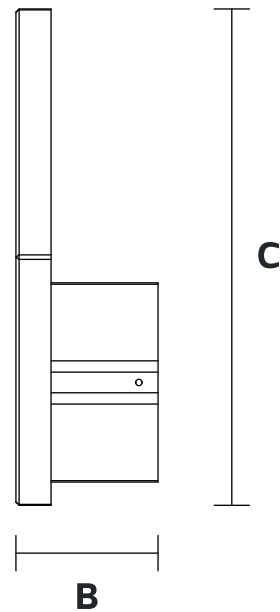
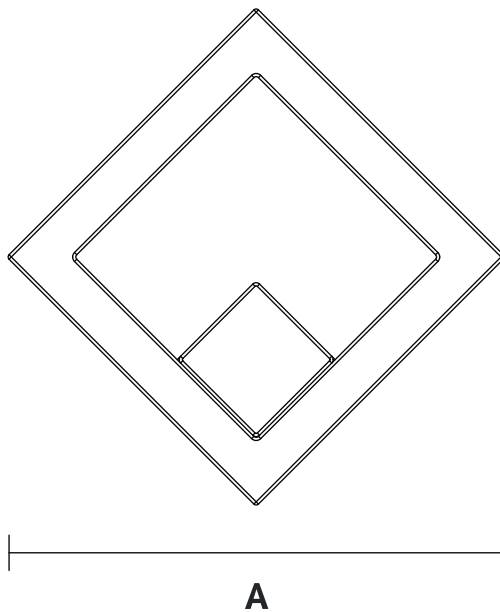
## LED Outdoor Wall Lamp

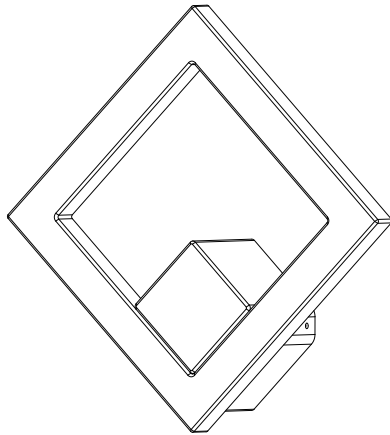
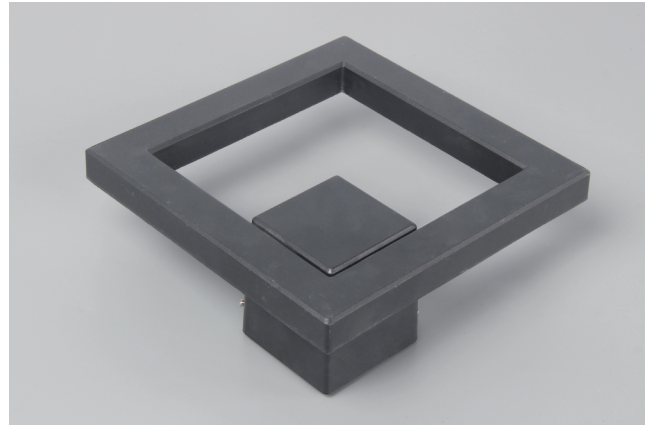
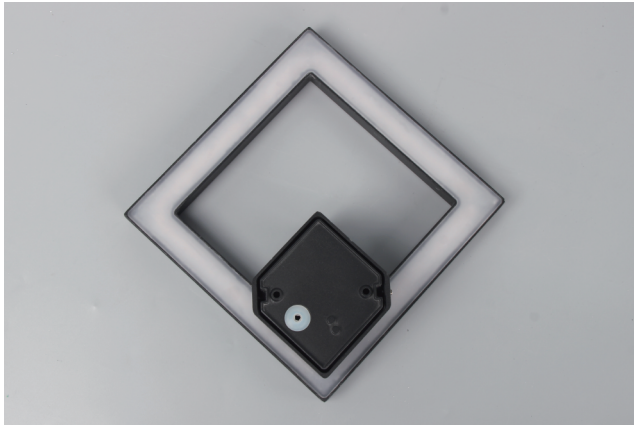
NR-OWL0602-10-30K-BK-100D  
IP65



Model No	P (W)	PF	Beam Angel	Output (lm)	lm/w	Dimensions in mm			
						A	B	C	
NR-OWL0602-10-30K-BK-100D	10	>0.7	120°	400	40	307	89	307	0.82

### Dimensions in mm





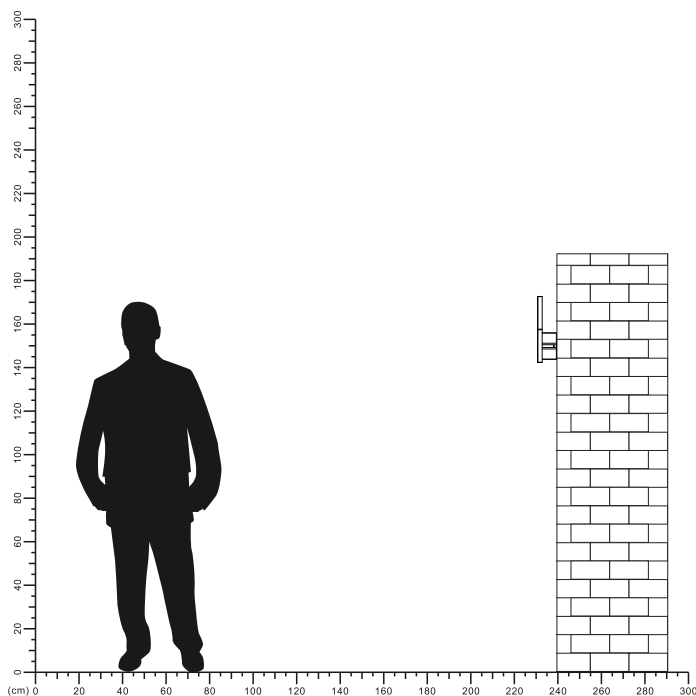
**Description:**  
LED Outdoor Wall Lamp

**Main material:**  
Aluminum+Pc

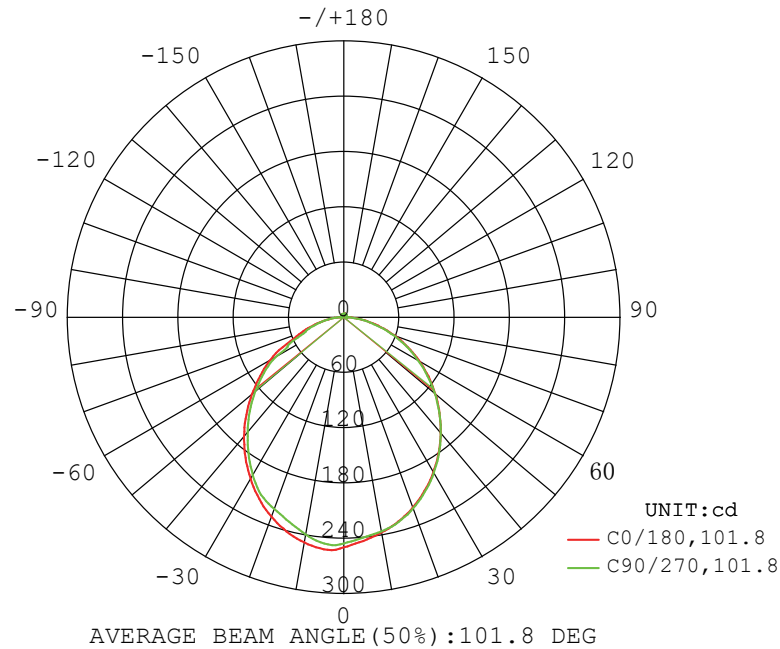
**Specification**  
Aluminum lamp body integrated die-casting molding, spraying process, fine work, waterproof and dustproof. High light transmission PC material lamp shade, bright and not dazzling, anti-aging, long service life. IP65

**Applications**  

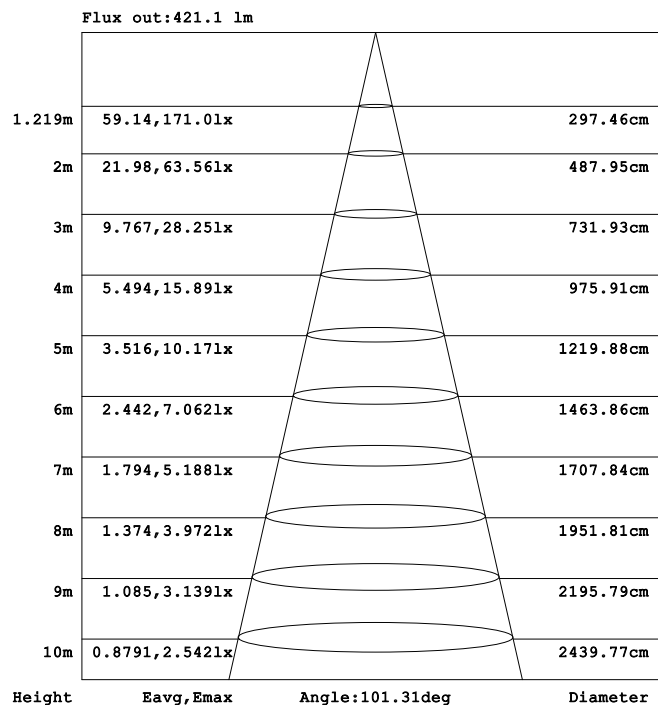
- . Park
- . Square
- . Tourist attraction
- . Corridor



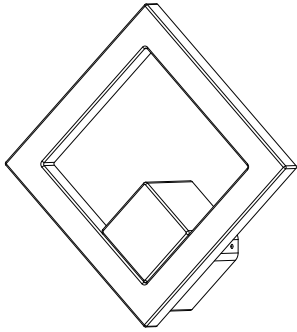
## LUMINOUS INTENSITY DISTRIBUTION DIAGRAM



## Illuminance at a Distance

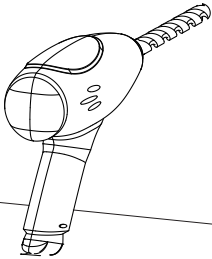
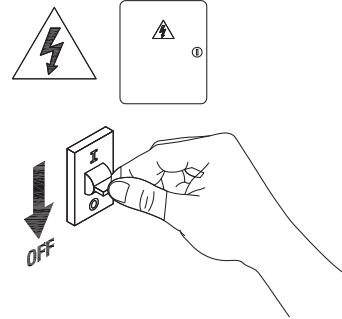


Note:The Curves indicate the illuminated area and the average illumination when the luminaire is at different distance.



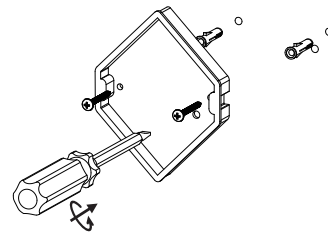
1

Turn off the power



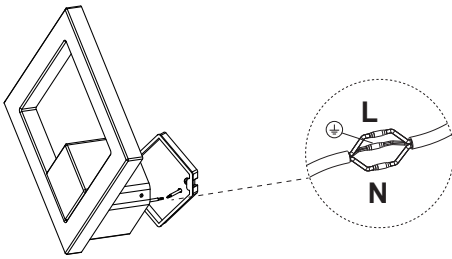
2

According to the holes in the baseplate position drill two screw holes on the wall



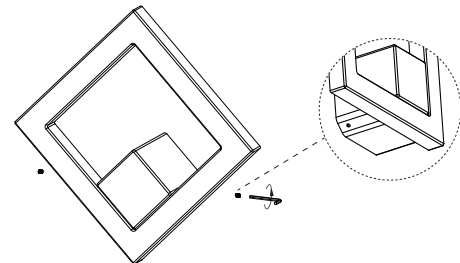
3

Insert the expansion screws and secure the base



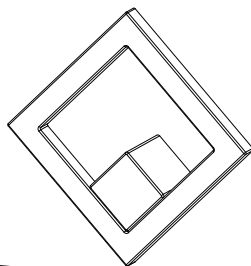
4

Connect the cable and wrap terminals with waterproof tape



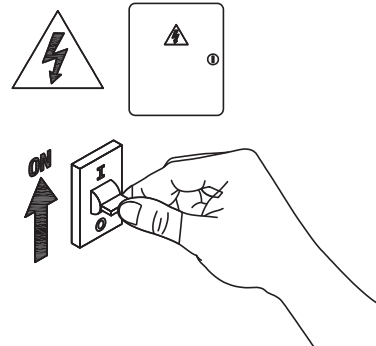
5

Tighten the screws to fix the lamp body



6

Installation completed



7

Turn on power

