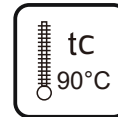
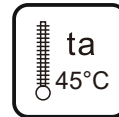
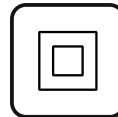
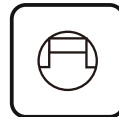


LED Strip Light Driver

NR-ST101-FLIKER Series

IP65



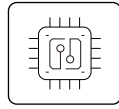
Item Code	P(W)	Input	Output Current	Dimensions in mm			kg
				A	B	C	
NR-ST101-FLIKER-100W	100	AC220-240V 50/60Hz Max:0.7A	DC226V \approx 0.45A Max	145	43	33	0.21
NR-ST101-FLIKER-150W	150	AC220-240V 50/60Hz Max:0.7A	DC226V \approx 0.63A Max	145	43	33	0.22
NR-ST101-FLIKER-250W	250	AC220-240V 50/60Hz Max:1.5A	DC226V \approx 1.1A Max	145	43	33	0.23

Dimensions in mm



Function introduction:

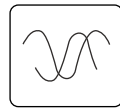
Keep the input voltage stable at 226V to ensure that the LED strip light will not be damaged by the fluctuations of the power grid and maximize the life of the LED strip light.



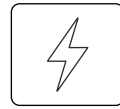
IC voltage stabilizer



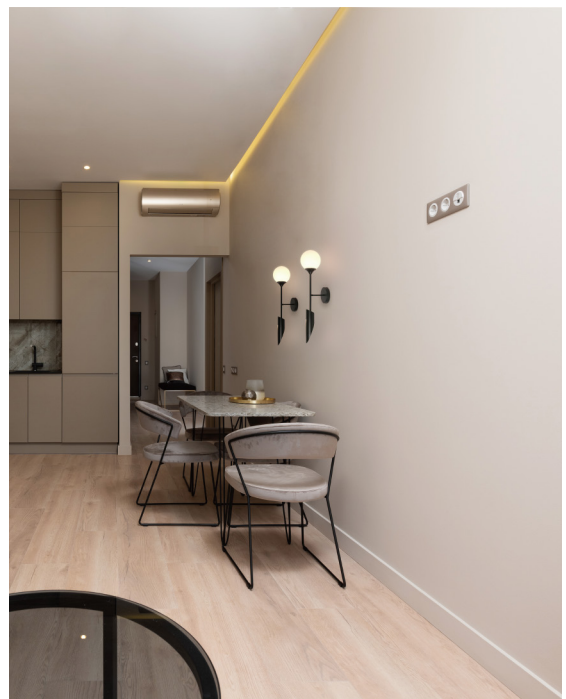
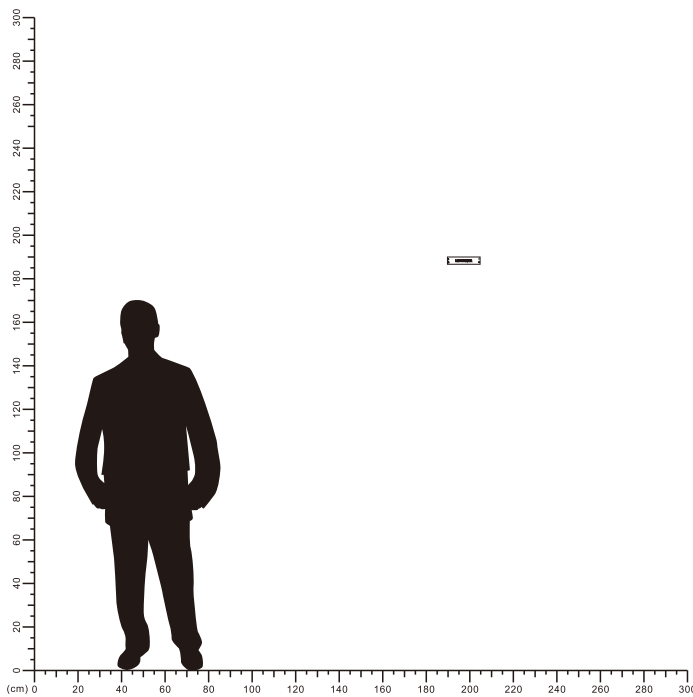
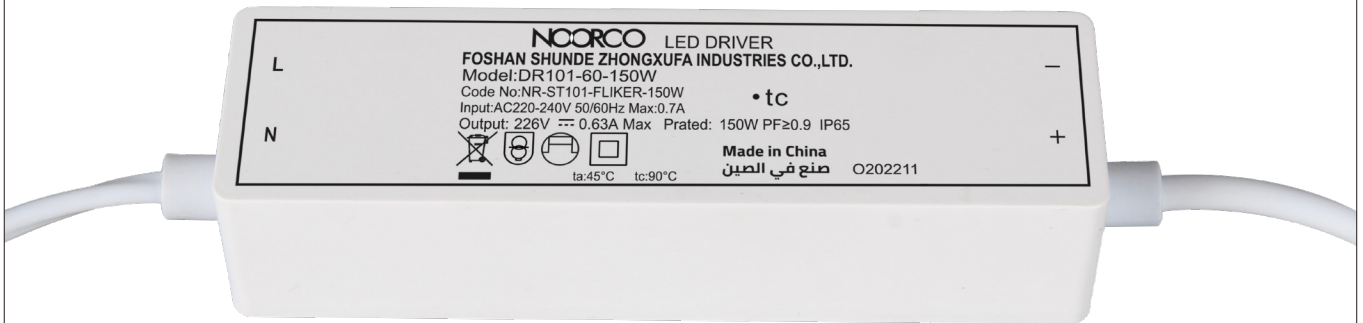
Overload protection



Control luminous flux attenuation



No stroboscopic



Connection diagram

