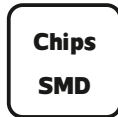
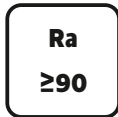
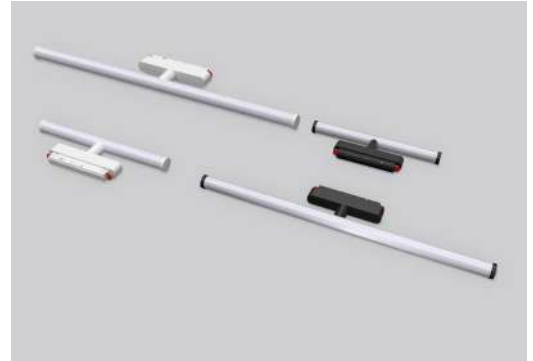


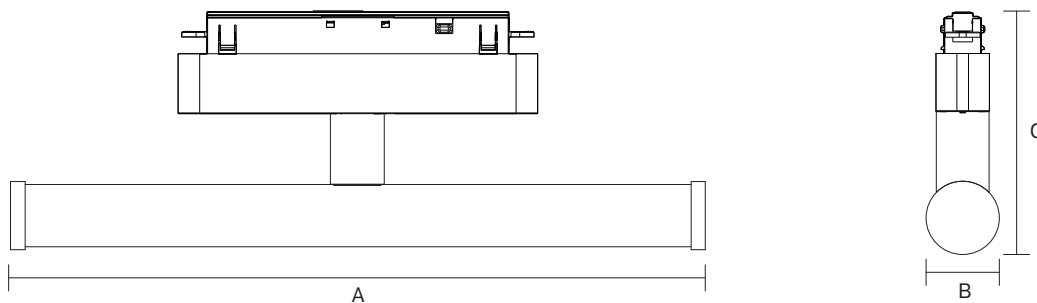
LED Magnetic Track System

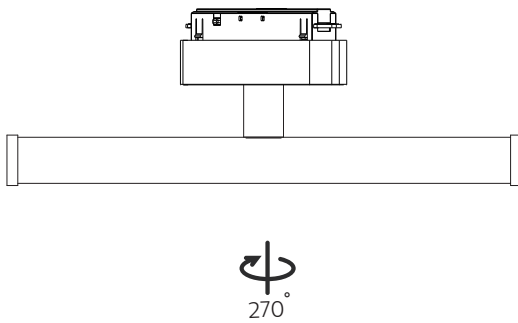
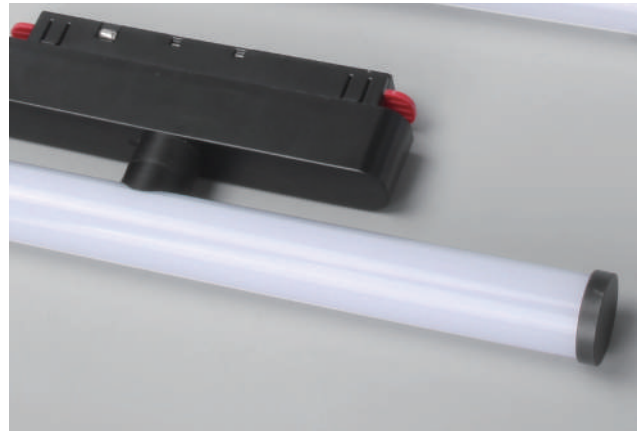
NR-TB105 Series
IP20



Item Code	P(W)	Using Track	Total Lumen	Beam Angle	Dimensions in mm			kg
					A	B	C	
NR-TB105-10	10	NR-S20/NR-S35	540	120°	290	26	100	0.15
NR-TB105-15	15	NR-S20/NR-S35	850	120°	578	26	100	0.20

Dimensions in mm



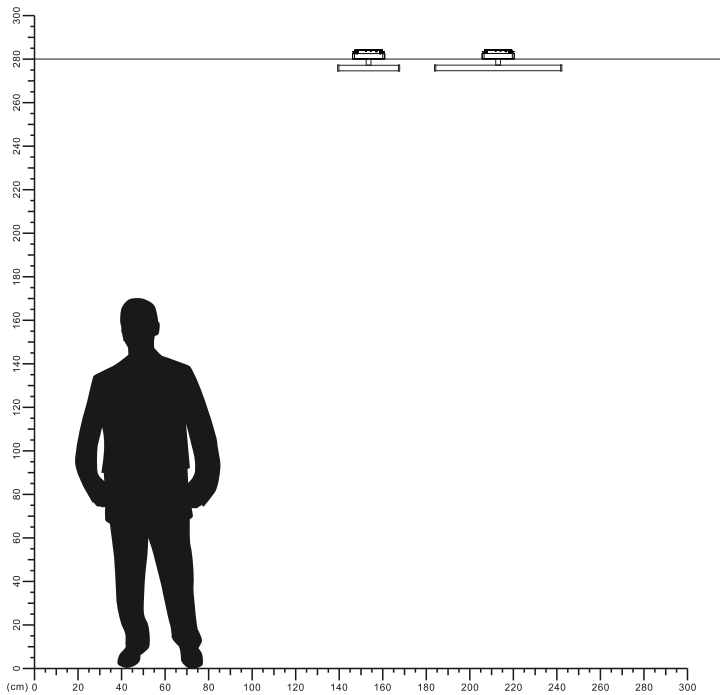


Description:
LED Magnetic Track System

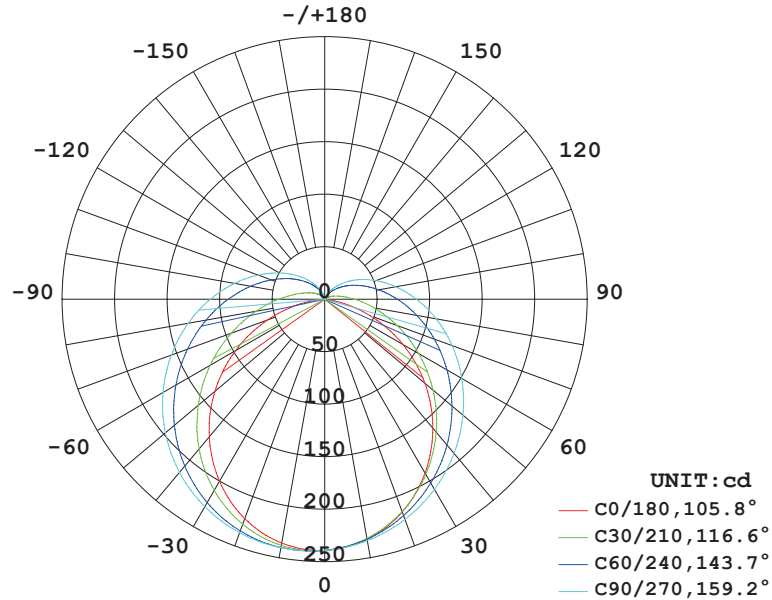
Main material:
Aluminum shell, Silica gel

Specification:
Energy saving, up to 85% energy saving comparing to standard halogen and incandescent lamps
High quality light, high color rendering, less heat, no UV or IR radiation
Build-in LED Driver

Applications
.Office
.Meeting room
.Sitting room

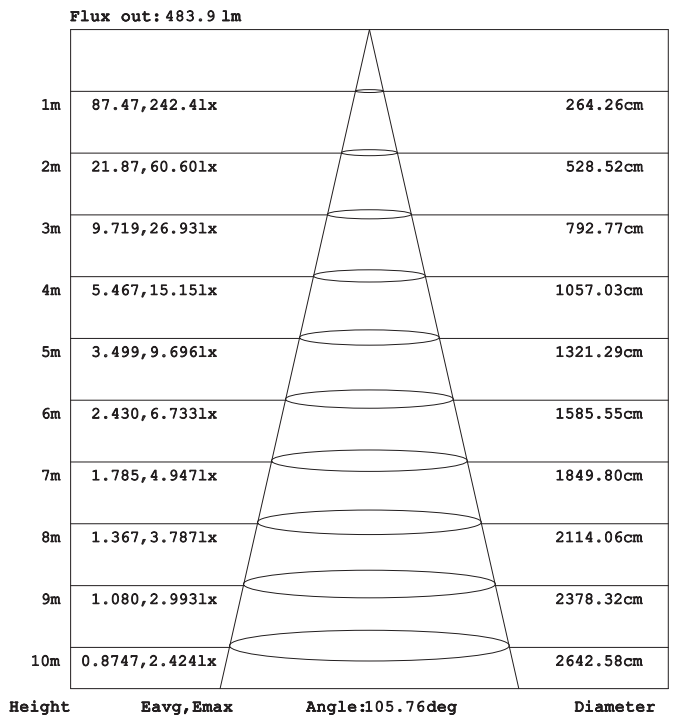


LUMINOUS INTENSITY DISTRIBUTION DIAGRAM



AVERAGE BEAM ANGLE (50%) : 131.3 DEG

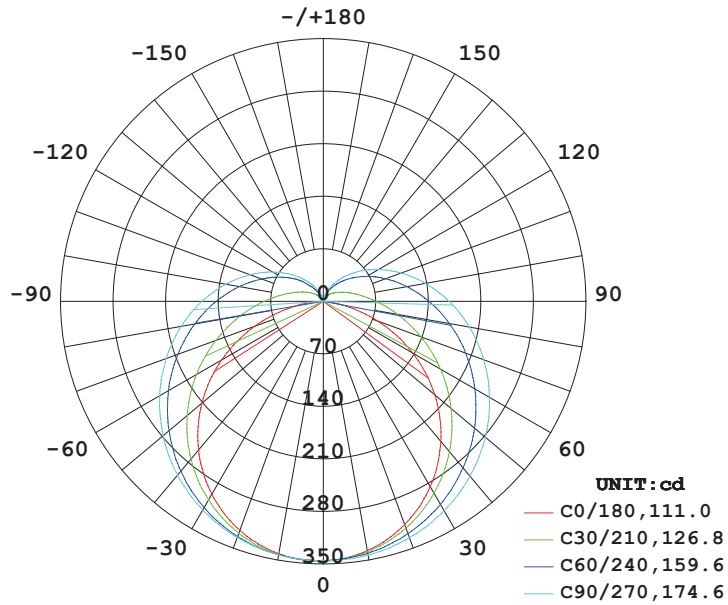
Illuminance at a Distance



Note: The Curves indicate the illuminated area and the average illumination when the luminaire is at different distance.

Model: NR-TB105-10

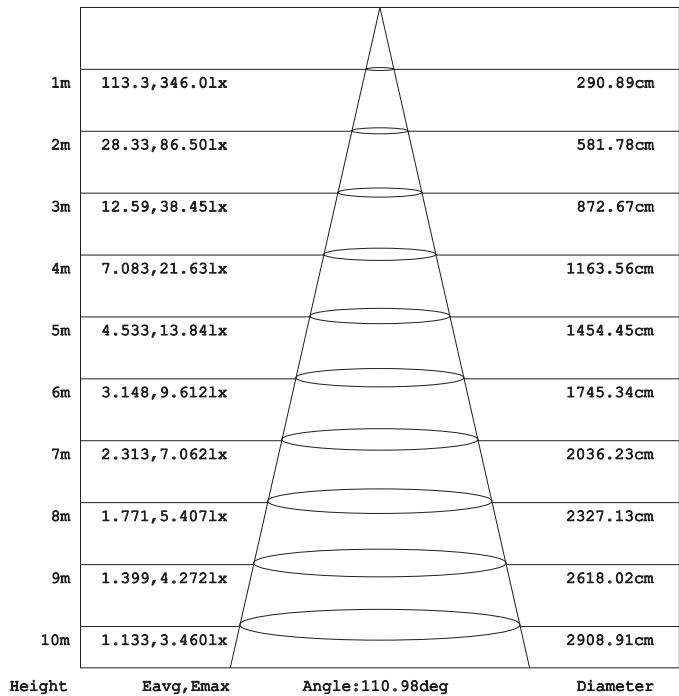
LUMINOUS INTENSITY DISTRIBUTION DIAGRAM



AVERAGE BEAM ANGLE (50%) : 143.0 DEG

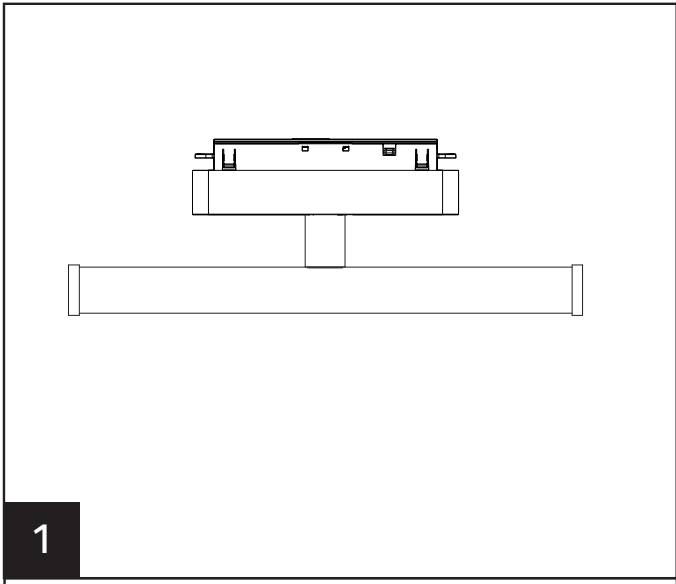
Illuminance at a Distance

Flux out: 782.6 lm

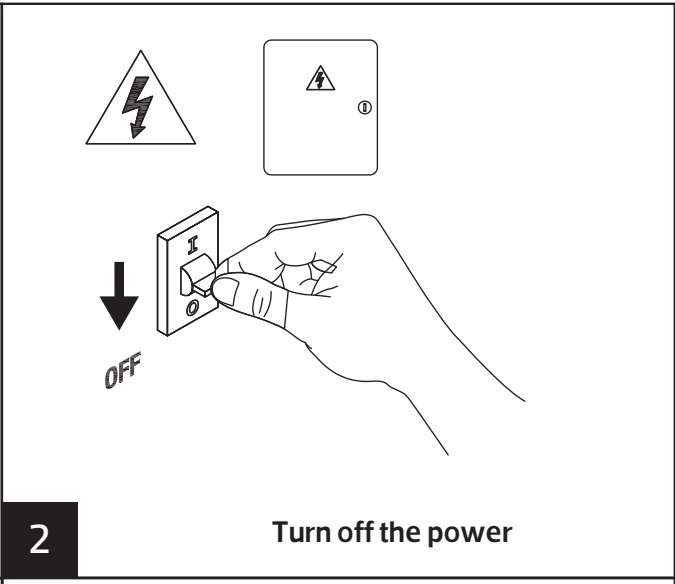


Note: The Curves indicate the illuminated area and the average illumination when the luminaire is at different distance.

Model: NR-TB105-15

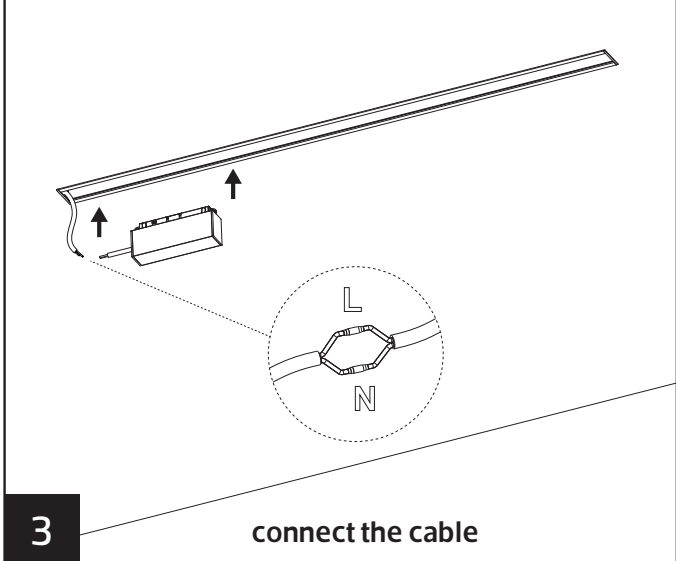


1



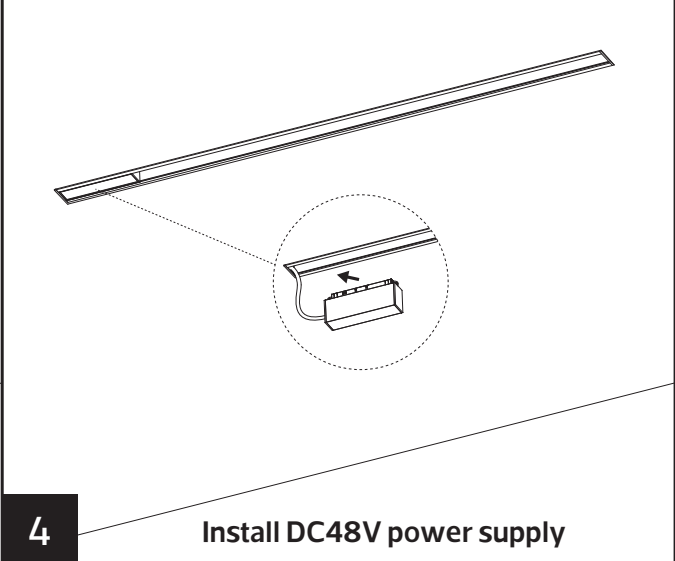
2

Turn off the power



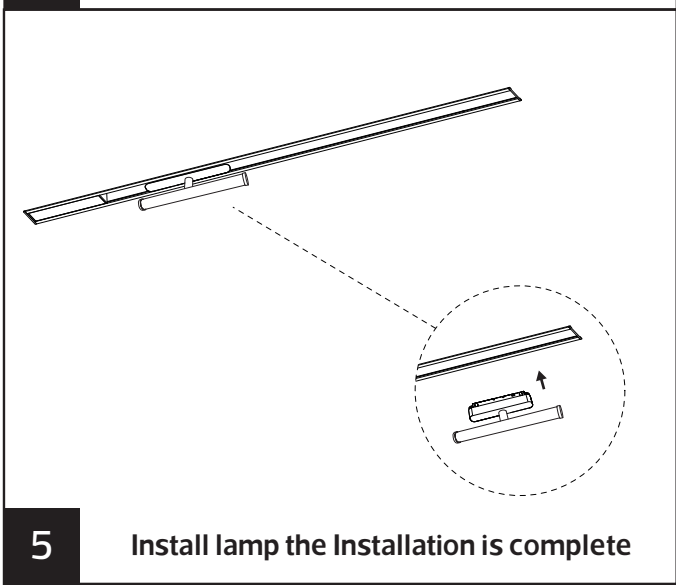
3

connect the cable



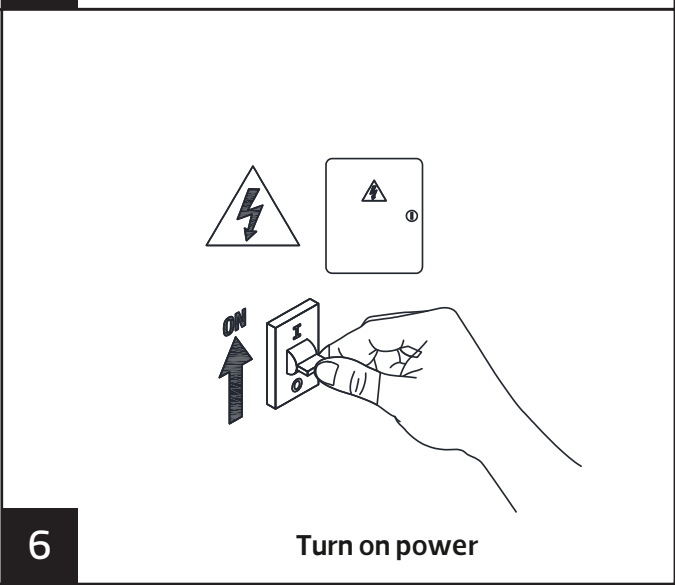
4

Install DC48V power supply



5

Install lamp the Installation is complete



6

Turn on power

