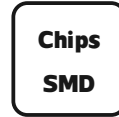
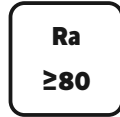


LED Outdoor Buried Lamp

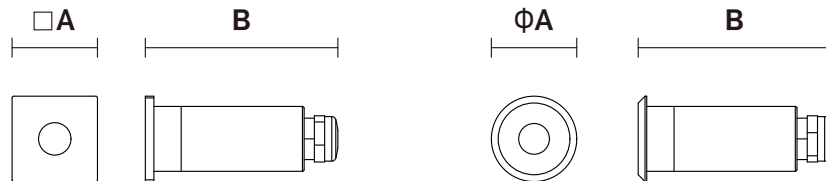
NR-UL103-1 Series

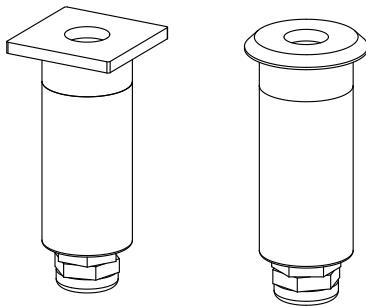
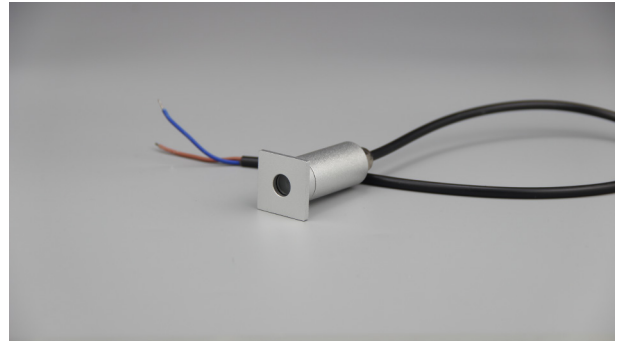
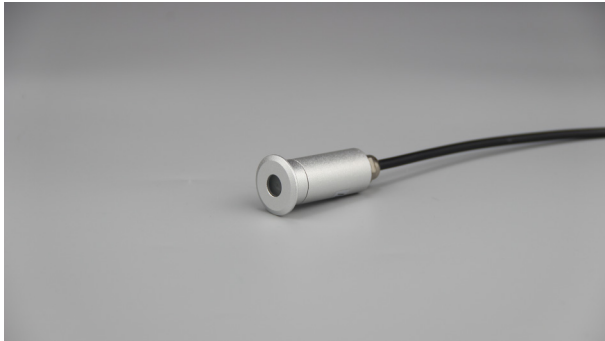
IP67



Item Code	P(W)	CCT(K)	Total Lumen	Beam Angle	Dimensions in mm		Hole Size (mm)	
					A	B		
NR-UL103-F-1	1	6500/4000/3000	20	36°	25	55	Φ19	0.05
NR-UL103-Y-1	1	6500/4000/3000	20	36°	25	56	Φ19	0.04

Dimensions in mm



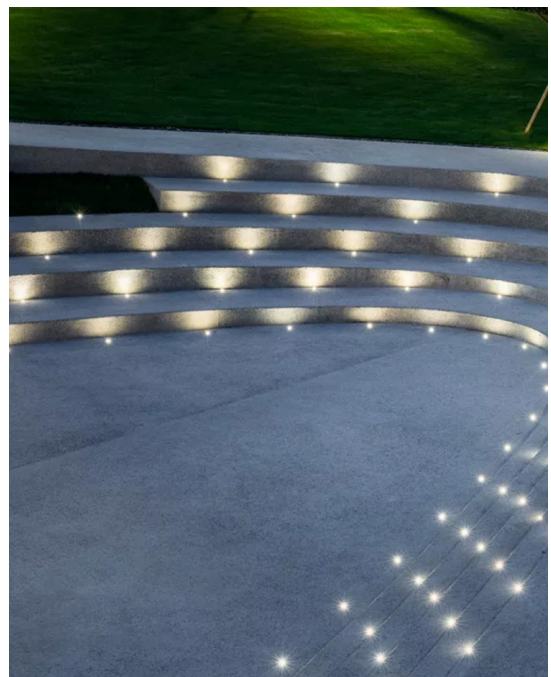
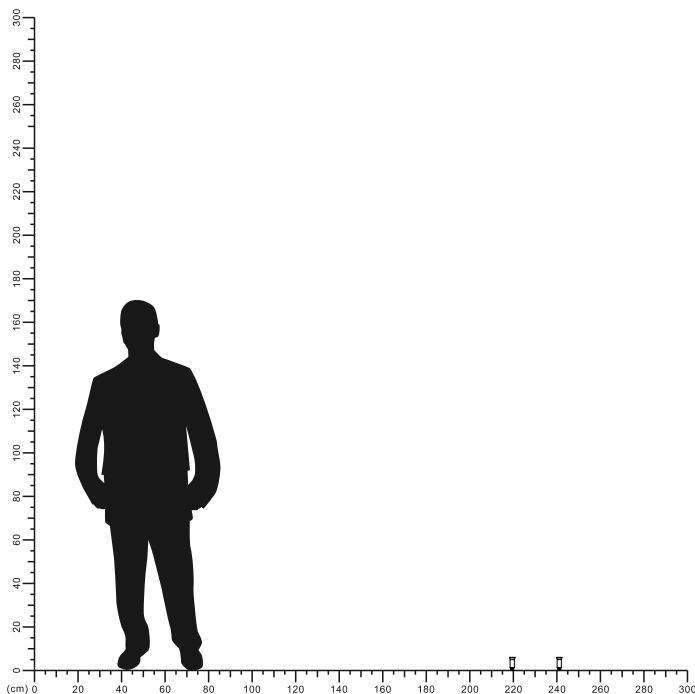


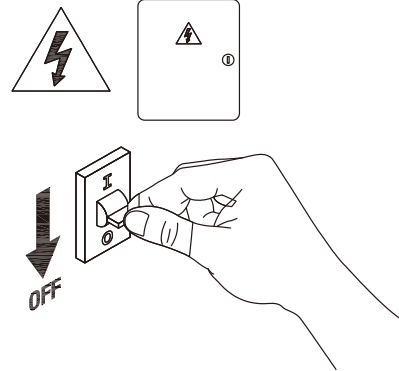
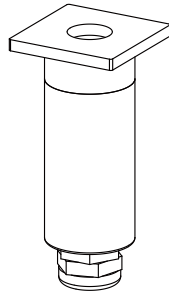
Description:
LED Outdoor Buried Light

Main material:
Aluminum shell

Specification:
Energy saving, up to 85% energy saving comparing to standard halogen and incandescent lamps
High quality light, high color rendering, less heat, no UV or IR radiation

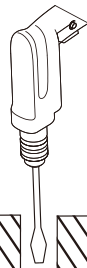
Applications
.Garden
.Square
.Outdoor





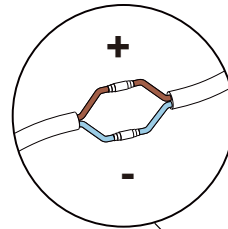
1

Turn off The Power



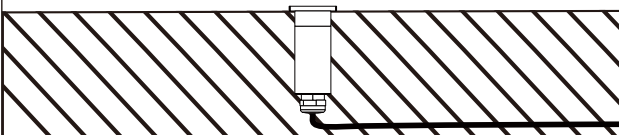
2

dig a hole on your ground



3

Connection the wire.



4

Installation completed.

