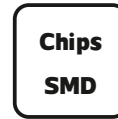
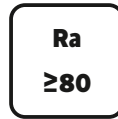
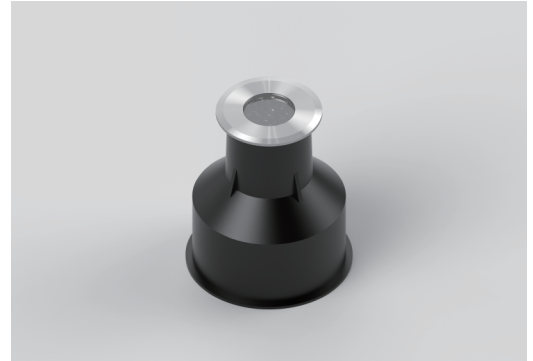


## LED Outdoor Buried Light

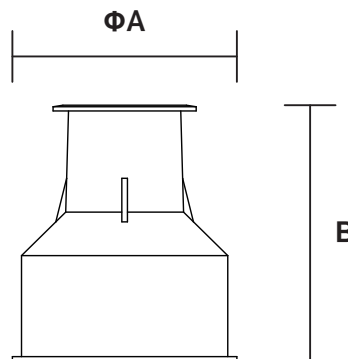
NR-UL103-2

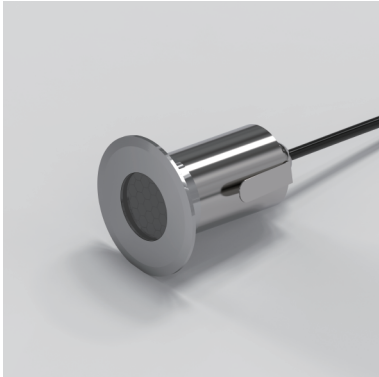
IP67



Item Code	P(W)	CCT(K)	Total Lumen	Beam Angle	Dimensions in mm A	Dimensions in mm B	Hole Size (mm)	kg
NR-UL103-2	2	6500/4000/3000	68	10°	80	85	Φ81	0.18

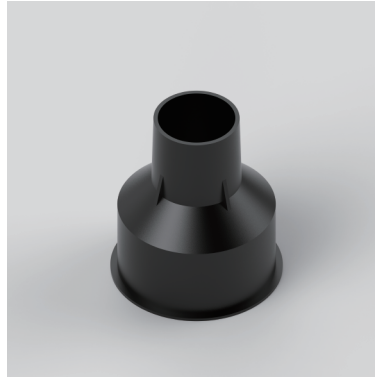
### Dimensions in mm



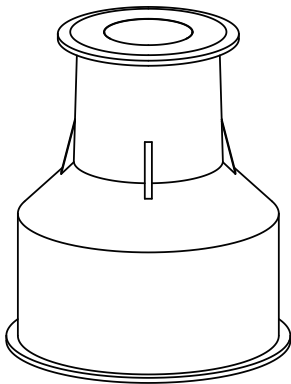


. Adopt high quality 304 stainless steel material, corrosion resistance is good, durable

. The lamp body is fully sealed with silicone seal protection, waterproof grade reaches IP67, sealing performance is stronger



. Supporting flame retardant plastic embedded parts, buried in advance installation, better protection lamp body.

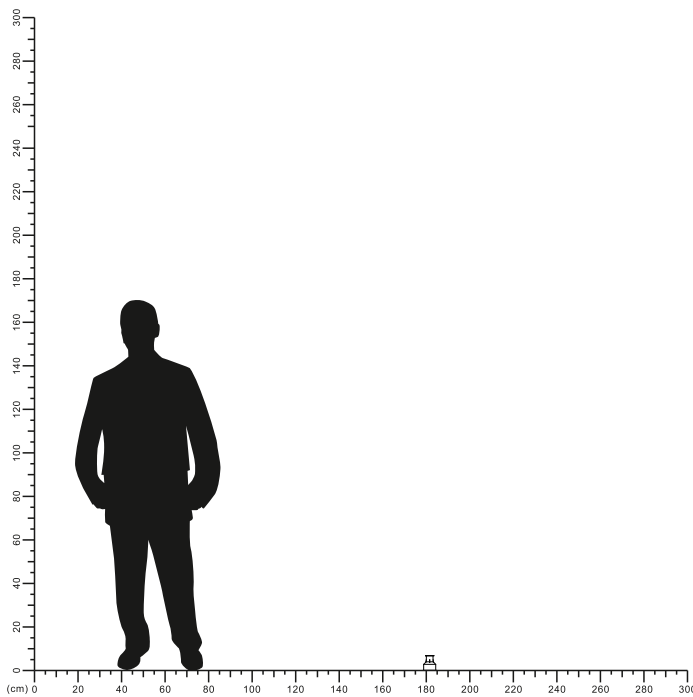


**Description:**  
LED Outdoor Buried Light

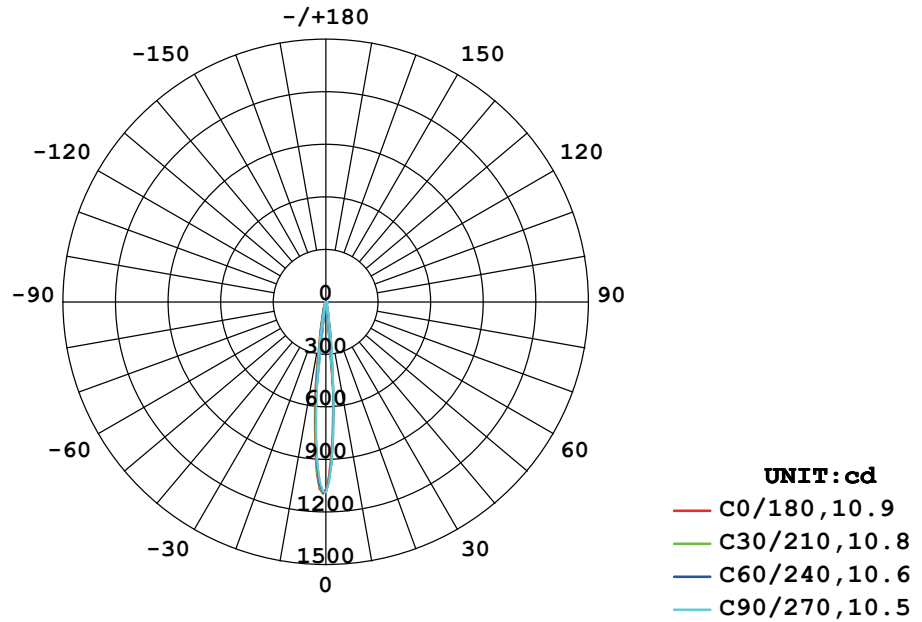
**Main material:**  
Stainless steel shell, engineering fireproof plastic shell, honeycomb anti-dazzle net

**Specification:**  
Energy saving, up to 85% energy saving comparing to standard halogen and incandescent lamps  
High quality light, high color rendering, less heat, no UV or IR radiation  
Build-in LED Driver

**Applications**  
.Garden  
.Square  
.Outdoor



# LUMINOUS INTENSITY DISTRIBUTION DIAGRAM



**AVERAGE BEAM ANGLE (50%) : 10.7 DEG**

## Illuminance at a Distance

