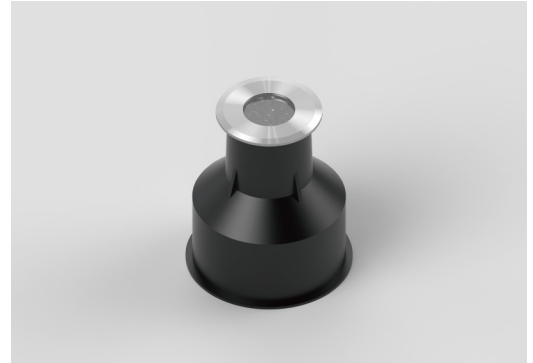


## LED Outdoor Buried Lamp

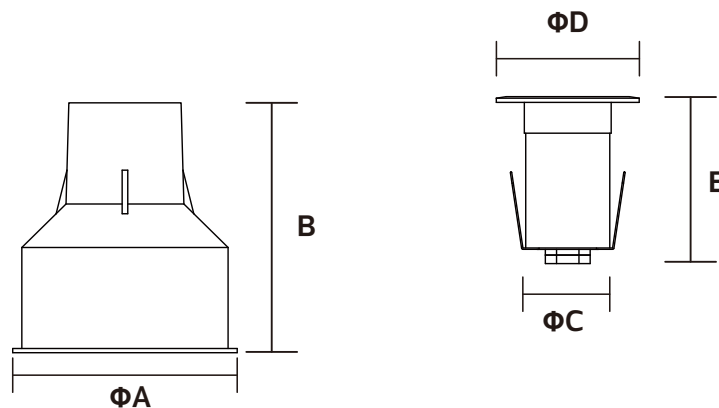
NR-UL0101-2-30K-SL-10D  
IP67

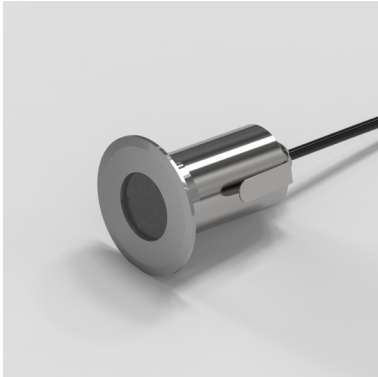


Outdoor	AC 220-240V	50/60 Hz	Ra ≥80	CCT 3000K	IP67	IK10	Beam Angle 10°	Chips SMD	
---------	----------------	-------------	-----------	--------------	------	------	----------------------	--------------	--

Model No	P(W)	CCT(K)	Total Lumen	Beam Angle	Dimensions in mm					Hole Size (mm)	
					A	B	C	D	E		
NR-UL0101-2-30K-SL-10D	2	3000K	80	10°	Φ80	85	Φ30	Φ51	67	Φ31(Lamp)/Φ85(Base)	0.18

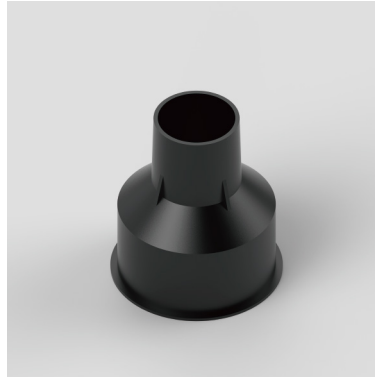
### Dimensions in mm



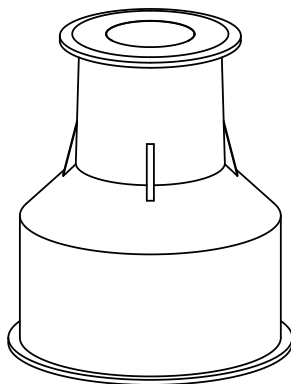


. Adopt high quality 304 stainless steel material, corrosion resistance is good, durable

. The lamp body is fully sealed with silicone seal protection, waterproof grade reaches IP67, sealing performance is stronger



. Supporting flame retardant plastic embedded parts, buried in advance installation, better protection lamp body.

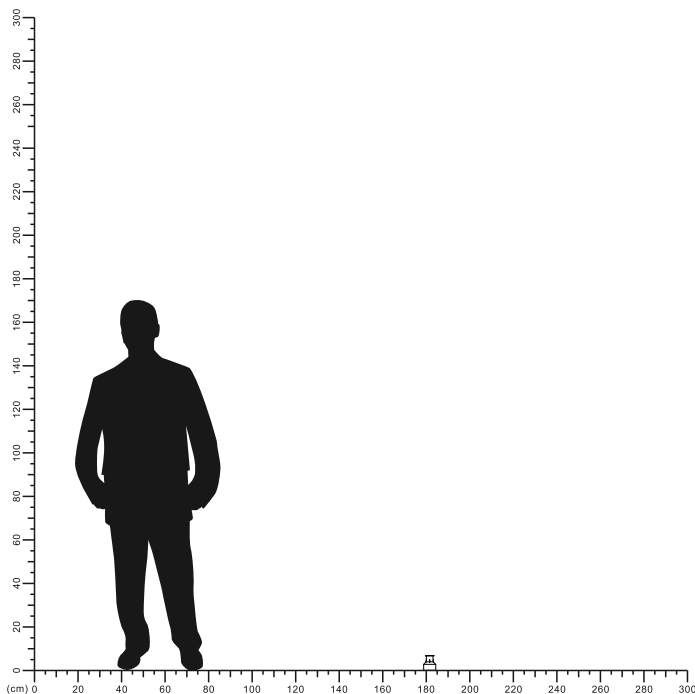


**Description:**  
LED Outdoor Buried Lamp

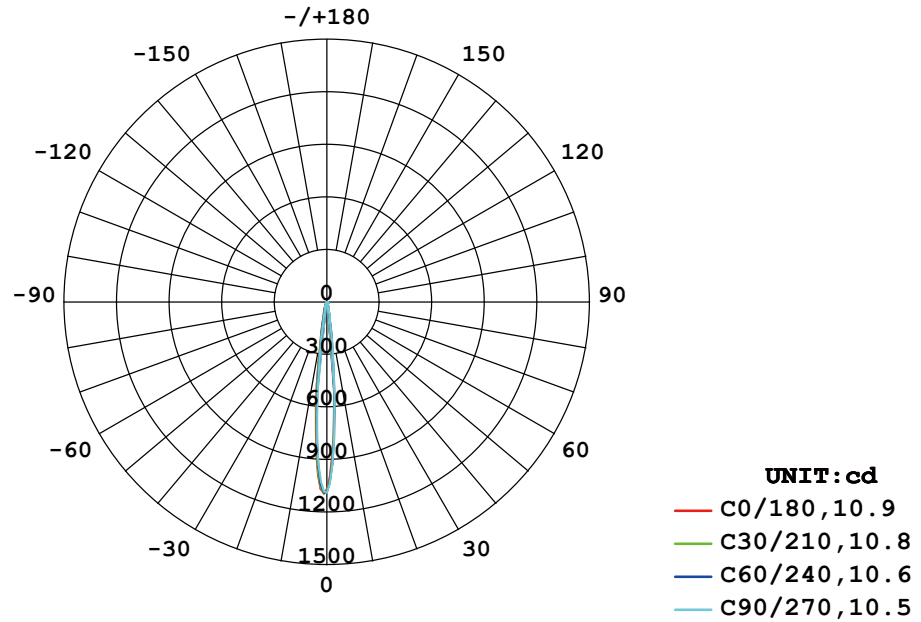
**Main material:**  
Stainless steel shell, engineering fireproof plastic shell, honeycomb anti-dazzle net

**Specification:**  
Energy saving, up to 85% energy saving comparing to standard halogen and incandescent lamps  
High quality light, high color rendering, less heat, no UV or IR radiation  
Build-in LED Driver

**Applications**  
.Garden  
.Square  
.Outdoor

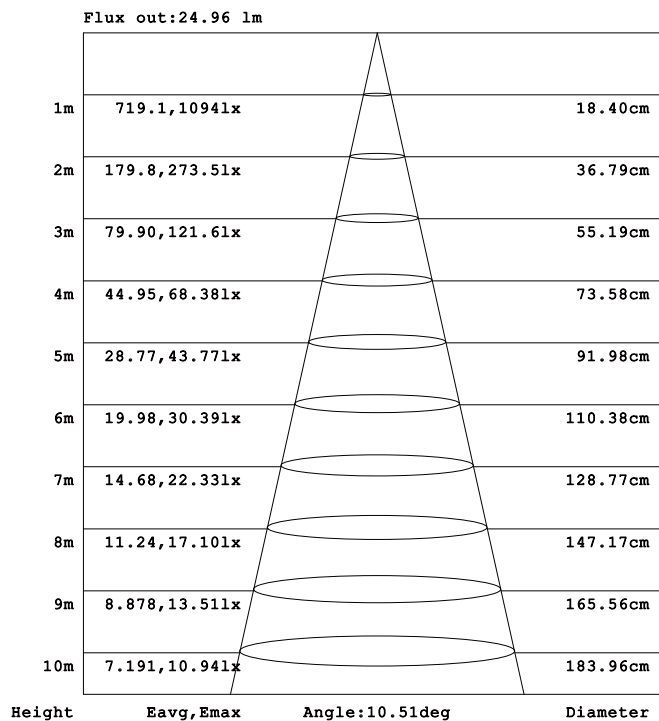


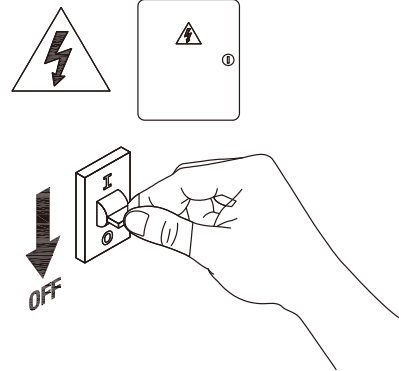
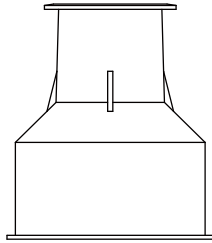
# LUMINOUS INTENSITY DISTRIBUTION DIAGRAM



**AVERAGE BEAM ANGLE (50%) : 10.7 DEG**

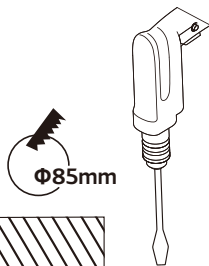
## Illuminance at a Distance





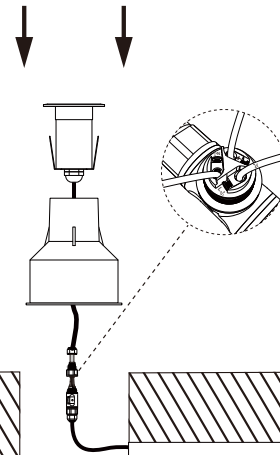
1

Turn off The Power



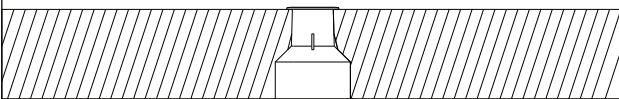
2

Dig a hole on your ground



3

Connection the wire.



4

Installation is completed.

