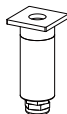


NOORCO

LED OUTDOOR BURIED LAMP



Product benefits & features:

Using professional waterproof design with high waterproof grade, high quality LED chip as light source to provide high brightness lighting effect. Buried installation, the lamps can be recessed into the ground for better integration into the environment. Not dimmable, Life time: up to 30,000h, Mercury-free lamps.

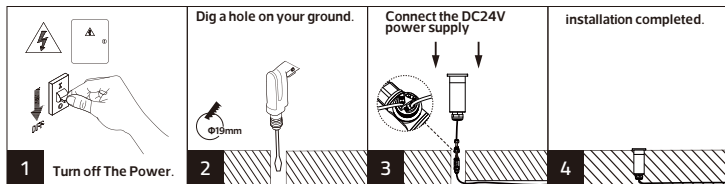
Areas of application:

Villa courtyard, park, stairs

Caution:

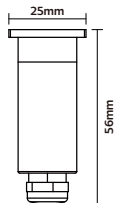
1. Please make sure the lamps are in good and must not have broken or loose parts.
2. Before installation, please make sure the power supply has been cut off and disconnected.
3. Choose a location and dig an appropriate sized hole in the ground to place the buried light.
4. Gently place the buried light into the hole and make sure it is stable.
5. When connecting the power supply, please make sure all lines are connected correctly and well sealed to avoid electricity leakage and water immersion.
6. Before connecting the power supply, make sure that the lamp and wiring are completely dry.
7. After installation, please make a test to ensure that the buried lights work properly and check whether there is any water leakage.
8. Please check the status of the lamps and wiring on a regular basis, clean up the dirt in time and make sure the connectors are stable.
9. If any problem or anything unusual happens, please cut off the power immediately and find a qualified professional for help.

Product Installation and Wiring Diagram



Product Specifications and Dimensions

Model No:	NR-UL0101-1-30K-SL-36D
Input:	DC24V
Power:	1W
Lumen Output:	20lm
CCT:	3000K
IP rated:	IP67
Beam Angle:	36°
Ra:	≥80



Customer Service Center: 8004300030

مركز خدمة العملاء 8004300030

www.meshKati.sa

Made in China
صنع في الصين