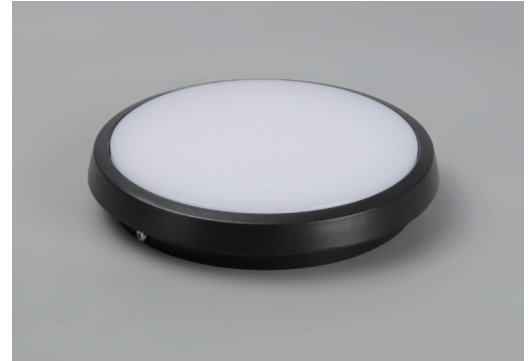


## LED Outdoor Wall Lamp

NR-W915S-24W

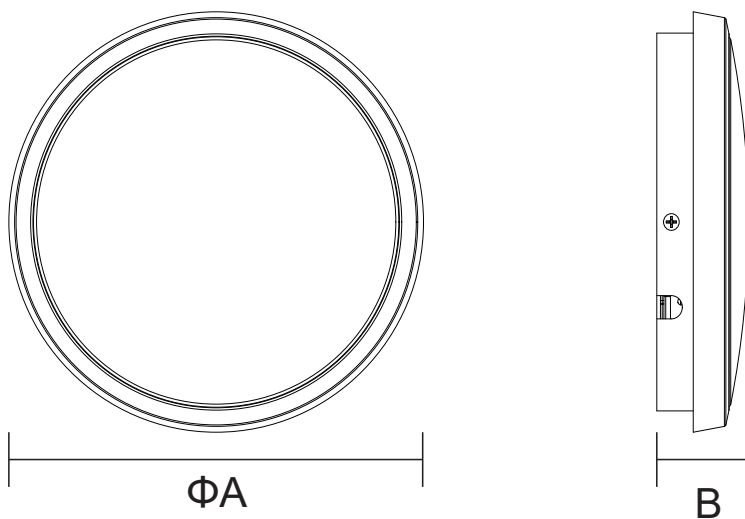
IP65

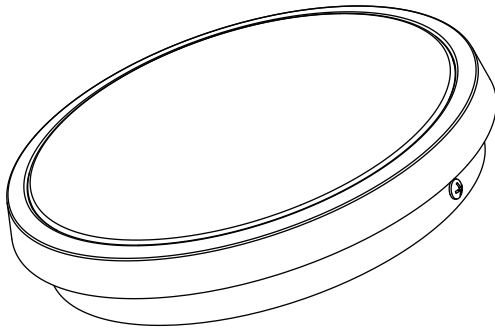


<b>Outdoor</b> 	<b>AC</b> 100-240V	<b>50/60</b> Hz	<b>PF</b> ≥0.7	<b>CCT</b> 6500K 4000K 3000K	<b>Ra</b> ≥80	<b>IP65</b>	<b>Beam Angel</b> 120°	<b>Chips</b> <b>SMD</b>	
--------------------	-----------------------	--------------------	-------------------	---------------------------------------	------------------	-------------	---------------------------	----------------------------	--

Item Code	P (W)	CCT(K)	Beam angle	Output (lm)	lm/w	Dimensions in mm		kg
						A	B	
NR-W915S-24W	24	3000/4000/6500	120°	1776	74	Φ220	60	0.96

### Dimensions in mm



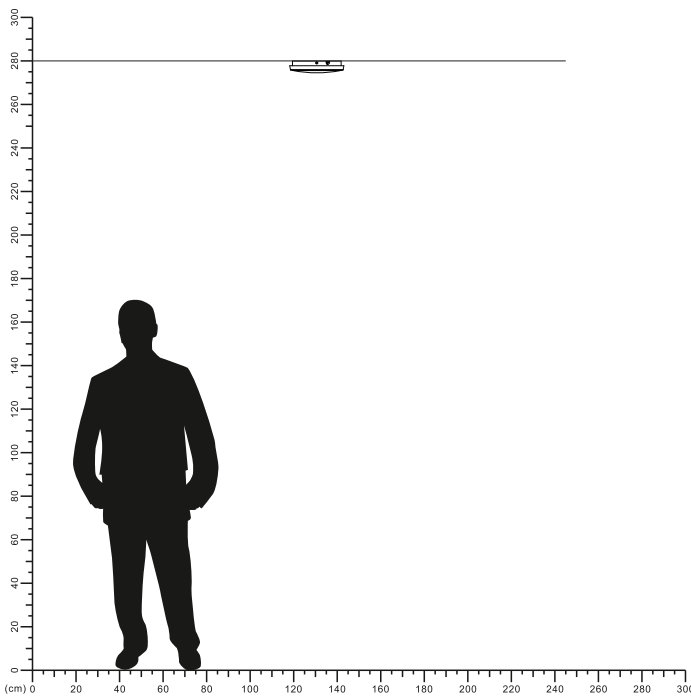


**Description:**  
LED Outdoor Wall Lamp

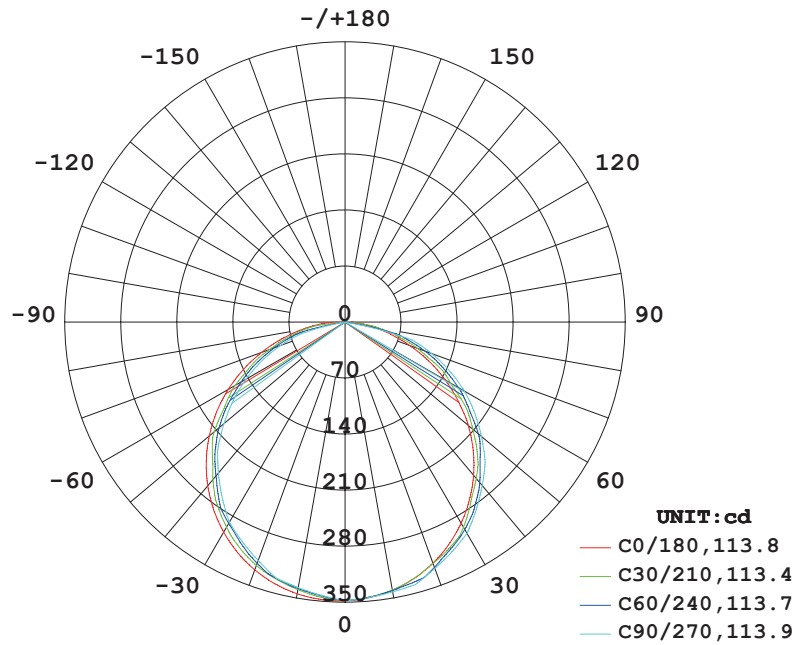
**Main material:**  
Aluminum+Glass

**Specification**  
Energy saving, up to 85% energy saving comparing to standard halogen and incandescent lamps  
High quality light, high color rendering, less heat, no UV or IR radiation  
Build-in LED Driver  
IP65

**Applications**  
. Park  
. Square  
. Tourist attraction  
. Corridor



# LUMINOUS INTENSITY DISTRIBUTION DIAGRAM



**AVERAGE BEAM ANGLE (50%) : 113.7 DEG**

## Illuminance at a Distance

Flux out: 742.0 lm

Height	Eavg, Emax	Angle: 113.75deg	Diameter
1m	99.60, 348.21x		306.50cm
2m	24.90, 87.051x		613.01cm
3m	11.07, 38.691x		919.51cm
4m	6.225, 21.761x		1226.01cm
5m	3.984, 13.931x		1532.51cm
6m	2.767, 9.6721x		1839.02cm
7m	2.033, 7.1061x		2145.52cm
8m	1.556, 5.4401x		2452.02cm
9m	1.230, 4.2991x		2758.53cm
10m	0.9960, 3.4821x		3065.03cm

Note: The Curves indicate the illuminated area and the average illumination when the luminaire is at different distance.

