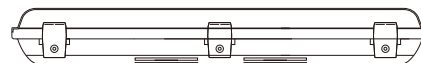


NOORCO^{plus}

LED TRI-PROOF LIGHT



Notes

1.Safety in electrical usage: Ensure that the power supply to the circuit is disconnected before installation, and connect the linear light in the correct manner. If you lack electrical Knowledge, it is best to have a professional perform the installation.

2.Secure fastening: Depending on the installation location, choose an appropriate method of fixing to ensure that the linear light is securely installed and capable of withstanding wind and external forces.

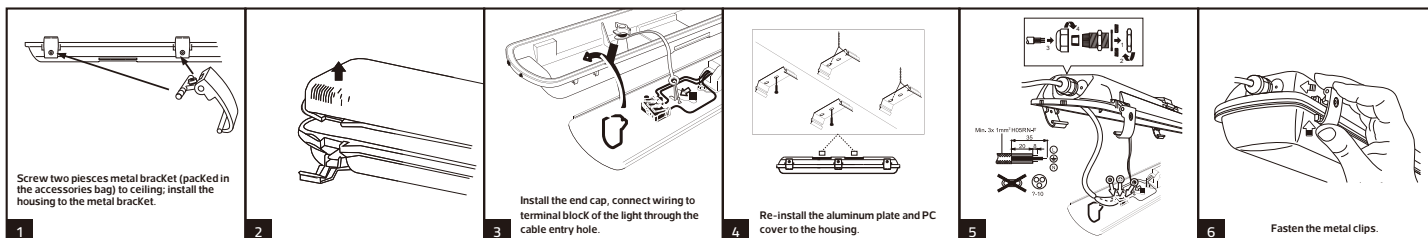
3.Cable protection: Use weather-resistant and safe cables, and employ wire troughs, cable conduits, or other measures to protect the cables from sunlight, rain, and other damage.

4.Regular maintenance and inspection: Outdoor linear lights are prone to accumulating dust, insects, and other debris. Regular cleaning and maintenance are necessary to ensure proper operation and longevity.

WARNING

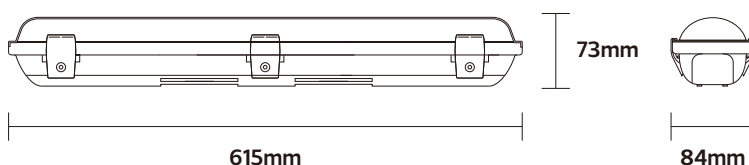
- 1.Turn power off before inspection, installation or removal.
- 2.The installation should be performed by qualifid electricians or lighting technicians.
- 3.Before conducting any installation, maintenance or removal, disable all power to the luminaries and wait until the fixure cool down.
- 4.Do not touch the fixure while it is in service.
5. If there is any problem with the fixure, Do turn off power and Do not attempt epair unless you are a qualifid technician or the customer service member.

Product Installation and Wiring Diagram



Product Specifications and Dimensions

Item Code:	NR-PL102-18
Input:	AC220-240V 50/60Hz
Power:	18W
Lumen Output:	2520lm
CCT:	6500K
Beam angle:	120°
IP rated:	IP65
Ra:	≥80



ta:45°C IP65

Customer Service Center.8004300030

مركز خدمة العملاء 8004300030

www.meshKati.sa

Made in China

صنع في الصين

