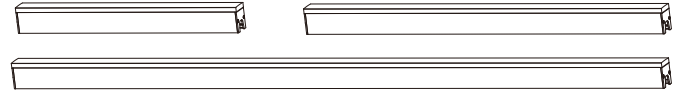


NOORCO^{plus} LED LINE LIGHT



Product benefits & features:

- 1. Lighting Effects:** Line lights typically use high-brightness LEDs as light sources, allowing users to achieve various lighting effects such as gradients, jumps, flashes, and fades precisely through controllers or dimmers, creating a diverse range of lighting effects.
- 2. Energy Efficiency and Environmental Friendliness:** LEDs, as light sources, have the characteristic of high energy efficiency. Compared to traditional lighting fixtures, DMX512 outdoor wall line lights can provide sufficient brightness while reducing energy consumption, thereby reducing the burden on the environment.
- 3. Scalability and Interconnectivity:** Multiple lights can be combined and interconnected. By connecting multiple fixtures, larger lighting effects can be created, achieving more impactful and visually appealing wall displays.
- 4. Installation Options:** Various installation options are available based on different application needs. They can be directly installed on the wall surface or suspended using brackets or mounting devices. This flexibility makes them suitable for various building structures and design styles.

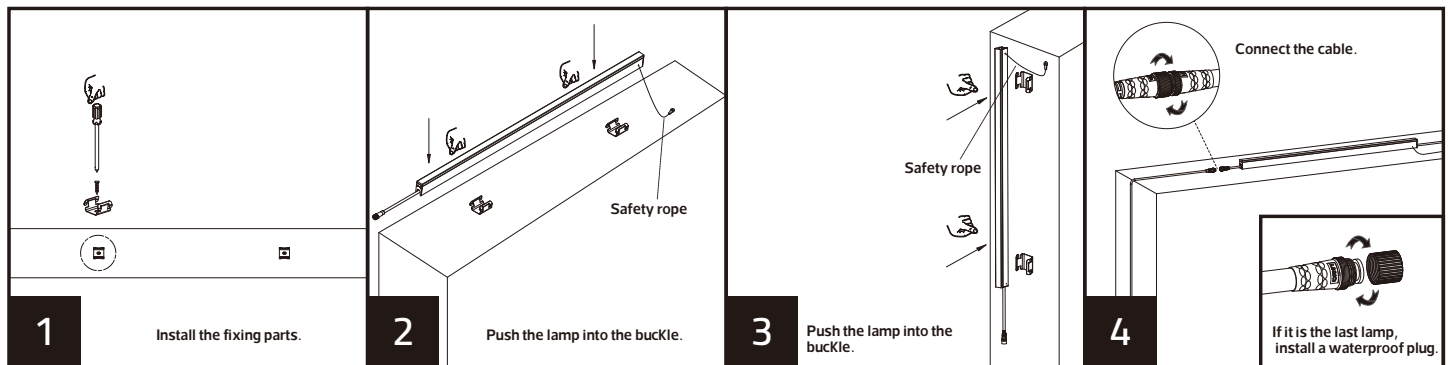
Areas of application:

Building exterior walls, bridges, parks, and squares.

Caution:

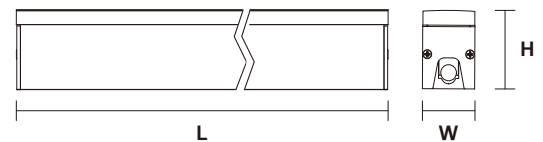
- 1. Safety in electrical usage:** Ensure that the power supply to the circuit is disconnected before installation, and connect the linear light in the correct manner. If you lack electrical knowledge, it is best to have a professional perform the installation.
- 2. Secure fastening:** Depending on the installation location, choose an appropriate method of fixing to ensure that the linear light is securely installed and capable of withstanding wind and external forces.
- 3. Cable protection:** Use weather-resistant and safe cables, and employ wire troughs, cable conduits, or other measures to protect the cables from sunlight, rain, and other damage.
- 4. Regular maintenance and inspection:** Outdoor linear lights are prone to accumulating dust, insects, and other debris. Regular cleaning and maintenance are necessary to ensure proper operation and longevity.

Product Installation and Wiring Diagram



Product Specifications and Dimensions

| Item Code: | NRP-WL101-5W | NRP-WL101-8W | NRP-WL101-15W |
|---------------|--------------|--------------|---------------|
| Input: | DC24V | DC24V | DC24V |
| Power: | 5W | 8W | 15W |
| Lumen Output: | 370lm | 608lm | 1170lm |
| CCT: | 3000K/4000K | 3000K/4000K | 3000K/4000K |
| Beam angle: | 120° | 120° | 120° |
| IP rated: | IP65 | IP65 | IP65 |
| Ra: | ≥80 | ≥80 | ≥80 |
| LxWxH(mm): | 300x30x47 | 500x30x47 | 1000x30x47 |



Customer Service Center.8004300030

Made in China

صنع في الصين