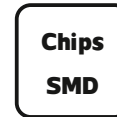
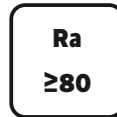
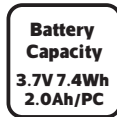
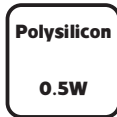
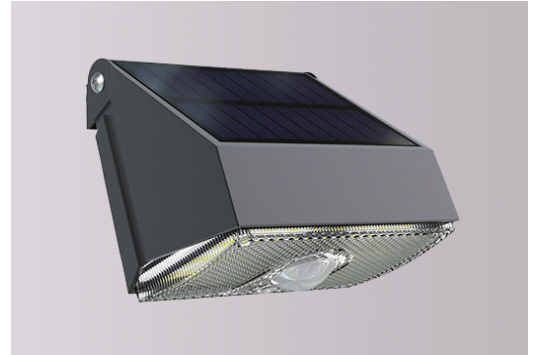


Solar LED Outdoor Garden Light

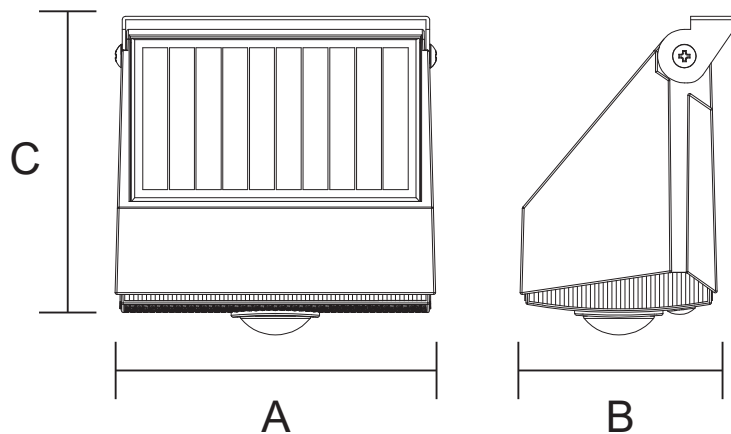
SWL-11

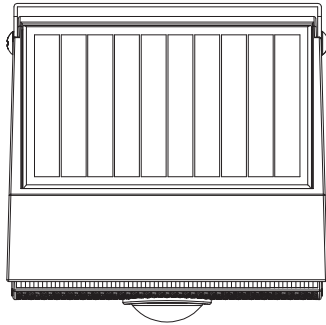
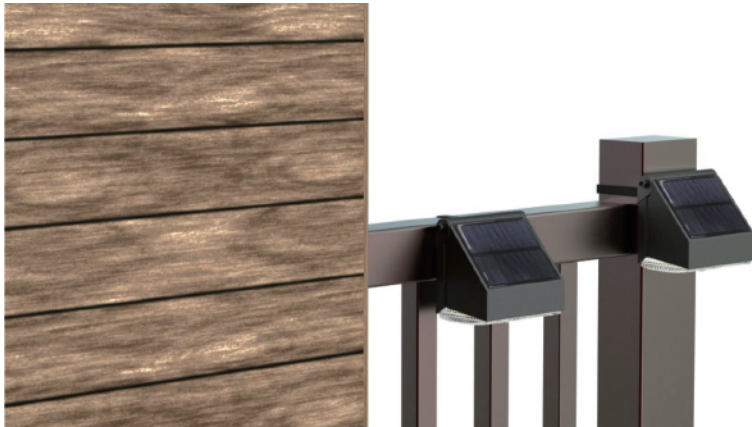
IP64/IK10



Item Code	P(W)	CCT(K)	Dimensions in mm			kg
			A	B	C	
SWL-11	7.6	4000	90	55	79	0.19

Dimensions in mm





Description:

Solar LED Outdoor Garden Light

Main material:

Die-cast aluminum

Specification

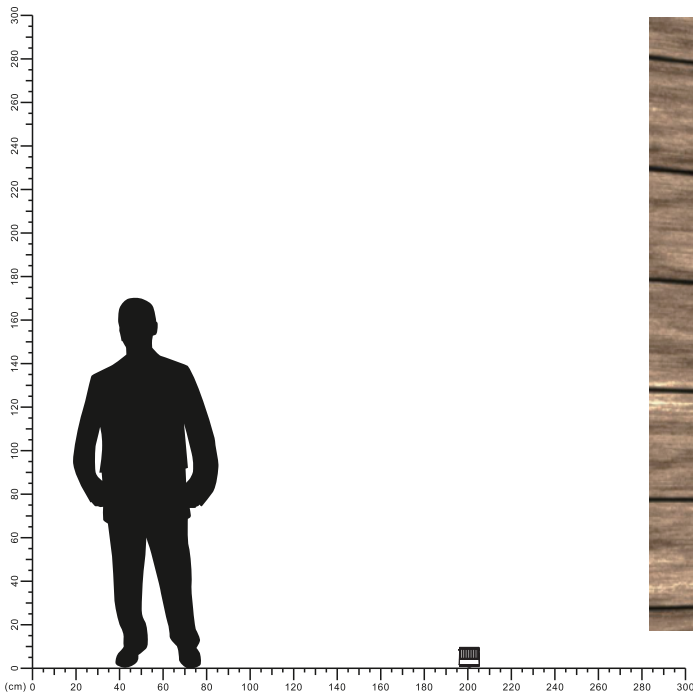
Energy saving, up to 85% energy saving comparing to standard halogen and incandescent lamps High quality light, high color rendering, less heat, no UV or IR radiation

LED driver is included

IP 64

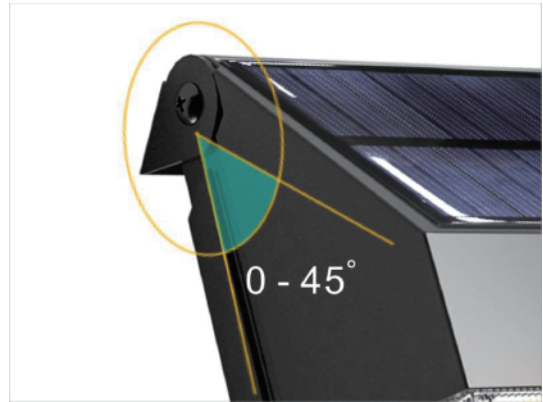
Applications

- . Park
- . Square
- . Corridor

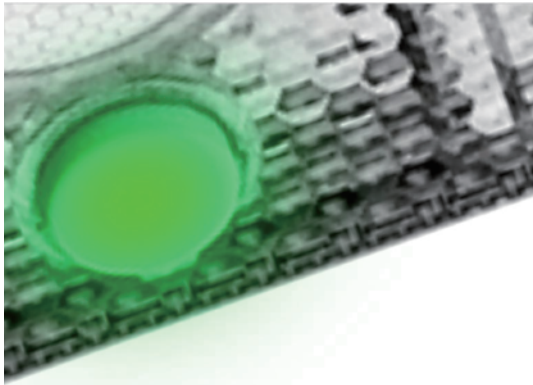




Polysilicon Solar Charging Efficiency:
> 19%



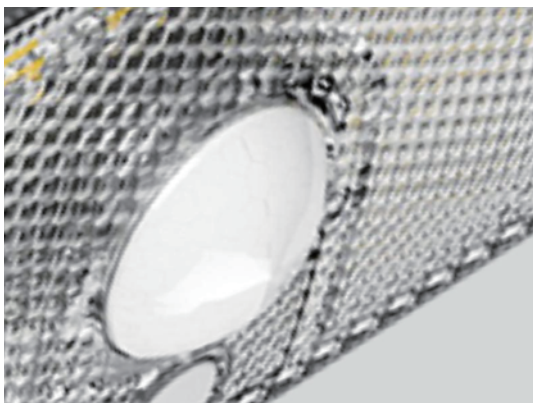
Multi-Angle Adjustable



Power Switch with LED Status Indicator



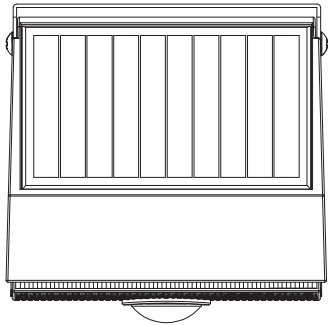
High Lumen LEDs
190lm/W



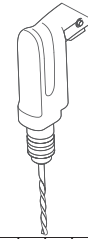
PIR Detection Range:
> 3m, 120°



Back Details

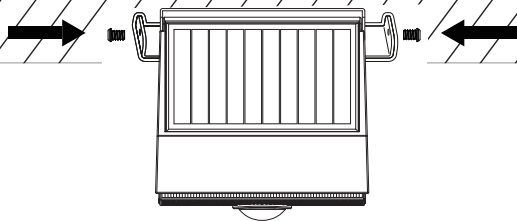


1



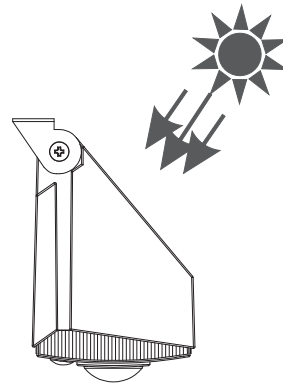
2

Drill two screw holes on the ground



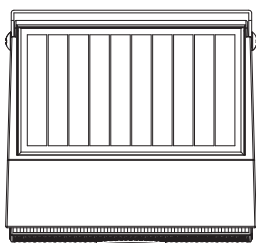
3

Installation completed.



4

Keep the solar panel towards the sun to ensure



Switch

5

