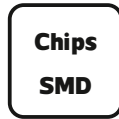
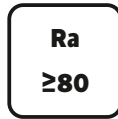
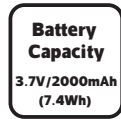
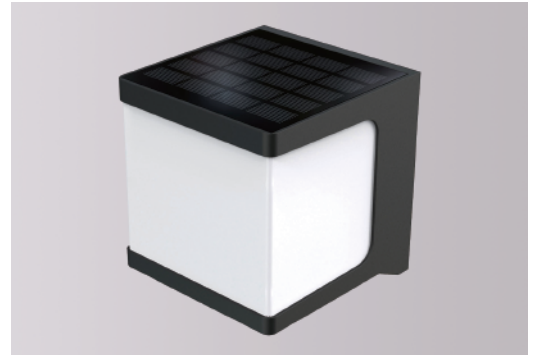


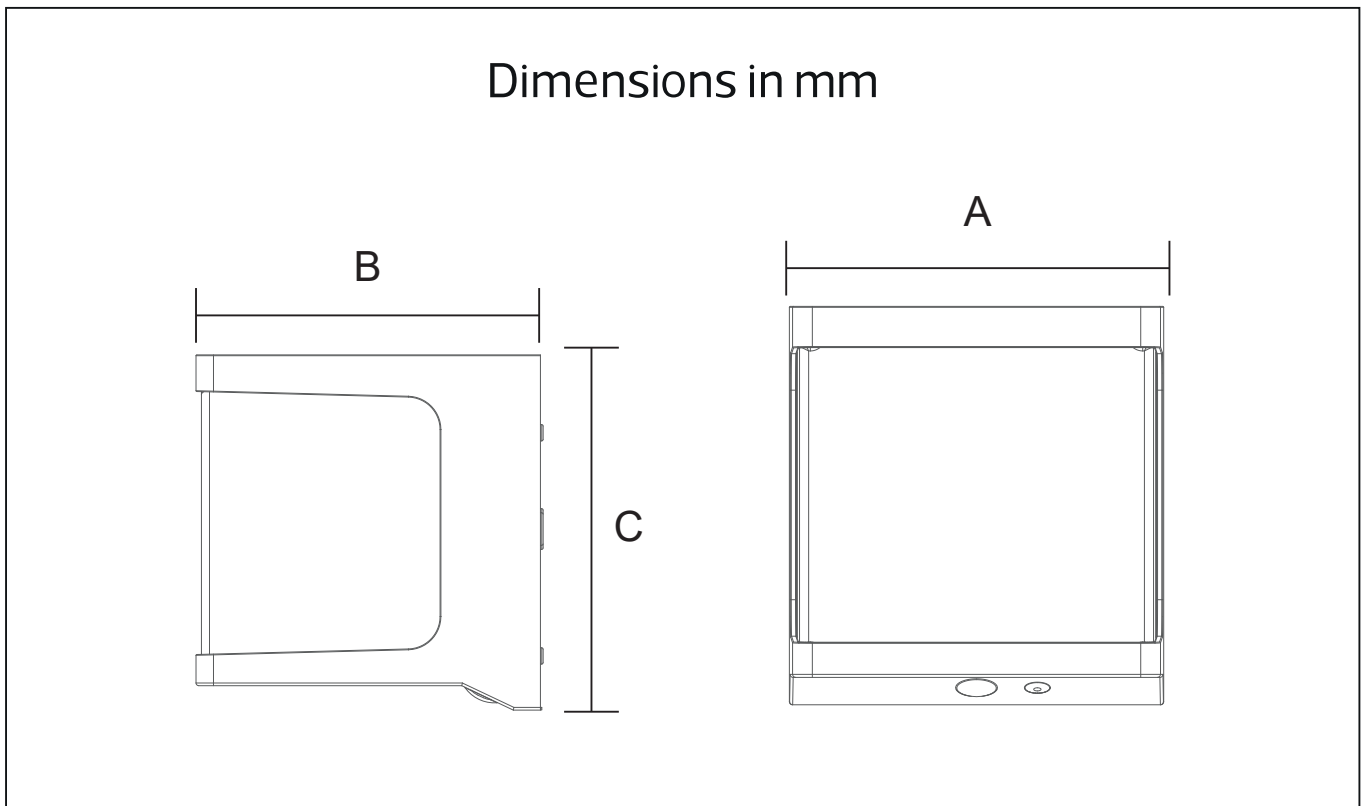
Solar LED Outdoor Garden Light

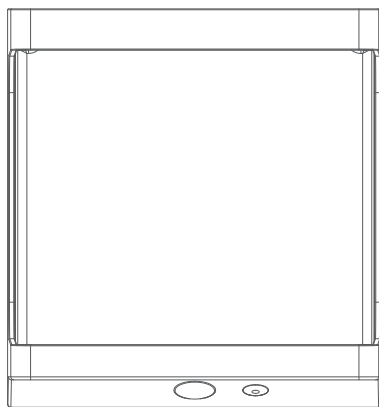
SWL-18

IP64/IK10



Item Code	P(W)	CCT(K)	Dimensions in mm			kg
			A	B	C	
SWL-18	10.8	4000	218	119	144	0.55





Description:

Solar LED Outdoor Garden Light

Main material:

Die-cast aluminum

Specification

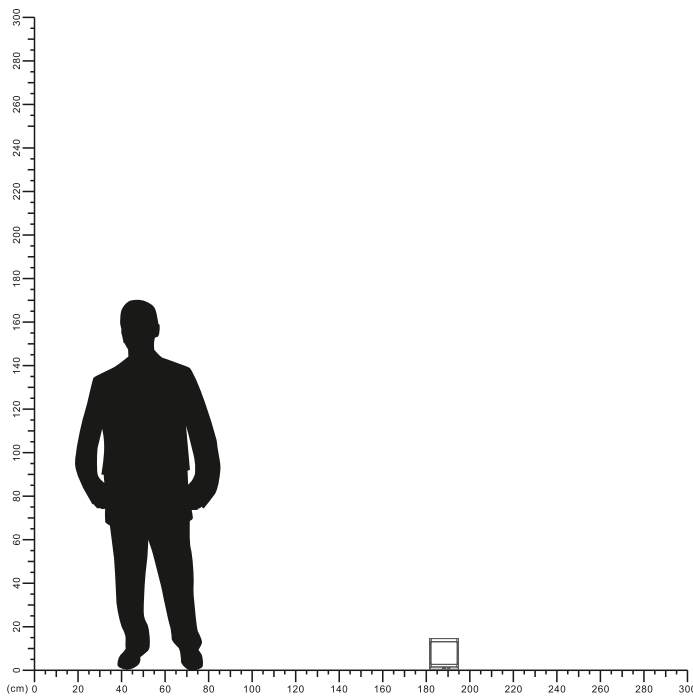
Energy saving, up to 85% energy saving comparing to standard halogen and incandescent lamps High quality light, high color rendering, less heat, no UV or IR radiation

LED driver is included

IP 64

Applications

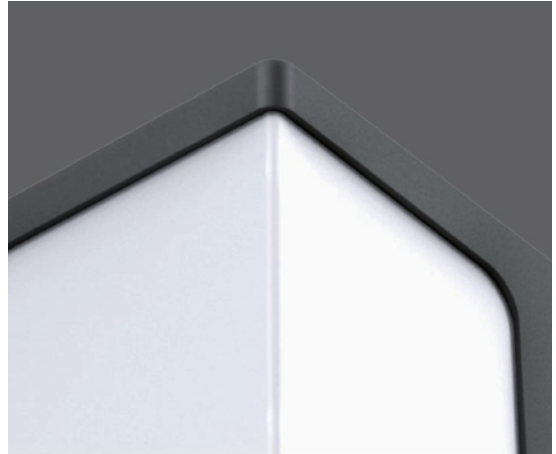
- . Park
- . Square
- . Corridor





Efficiency:

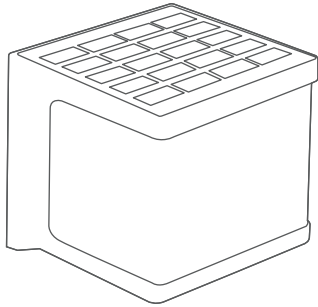
Solar Charging
Efficiency: > 21%



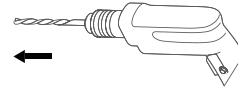
High Lumen LEDs
190lm/W



PIR: > 3M, 120°
Switch

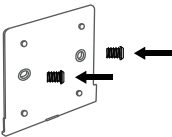


1



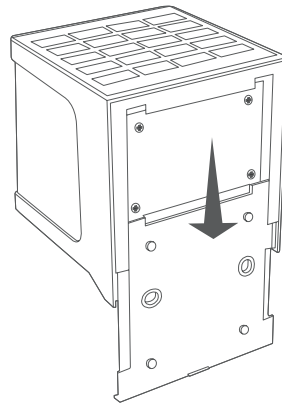
2

Drill two screw holes on the ground



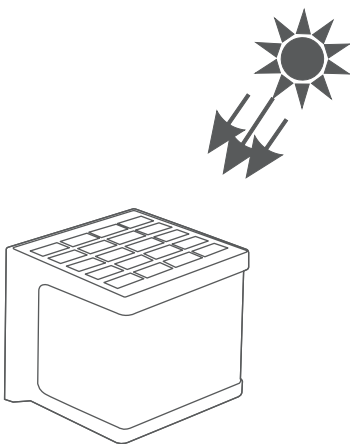
3

Mounting base plate



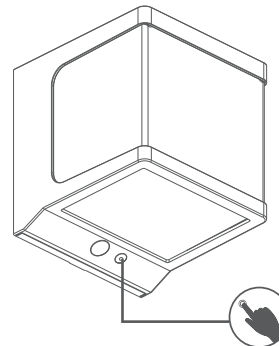
4

Installation completed.



5

Keep the solar panel towards the sun to ensure



Switch

6

