

105x148.5mm

# NOORCO

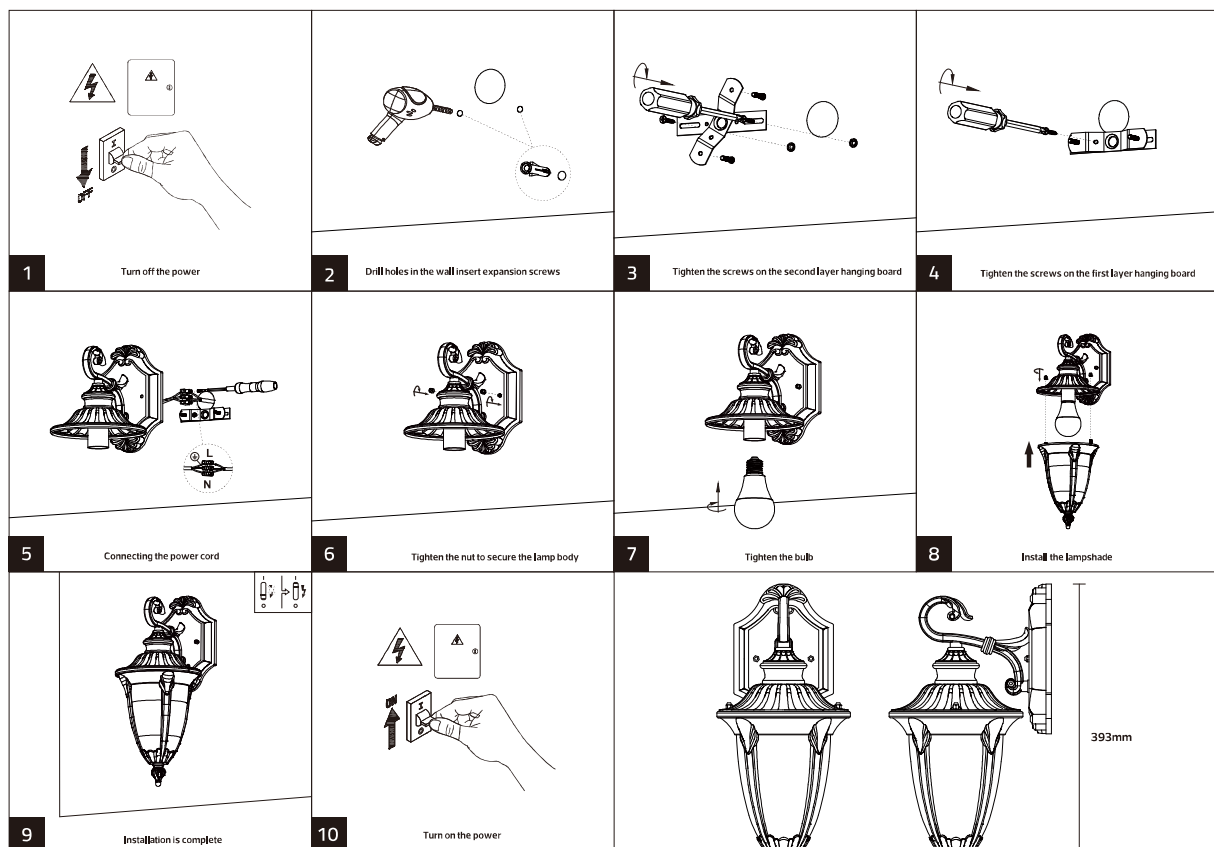
## WALL LAMP HOUSING



### Warning

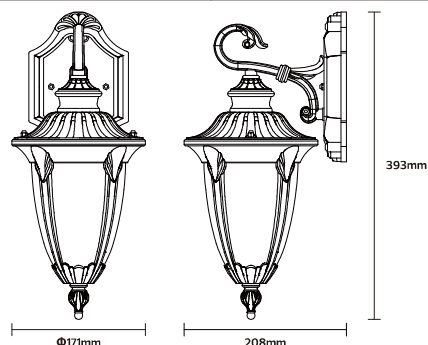
- 1.Installation position:** European-style wall lamps need to be installed on the wall. Choose a flat, solid, and defect-free location on the wall for installation, and it should be coordinated with the placement and size of the room's furniture.
- 2.Power supply issues:** Before installation, confirm whether the wires on the wall meet the installation specifications. It is recommended to have a professional electrician install it and ensure that the cable coordinates with the wall lamp properly.
- 3.Installation height:** The installation height of European-style wall lamps is generally 1.6 meters to 1.8 meters from the ground, which will not hit people's heads and will not have adverse effects on the eyes.
- 4.Installation method:** There are two types of installation methods for European-style wall lamps: fixed and hanging. The fixed type requires drilling holes in the wall and fixing the wall lamp on the wall; the hanging type requires hanging the wall lamp on the wall with a hanger and hiding the wires inside the hanger.

### Product Installation and Wiring Diagram



### Product Specifications and Dimensions

Model No:	NR-OWLS3251-1-BK
Input:	AC100-240V 50/60Hz
Power:	Max 40W
IP rated:	IP65



ta:50°C



Customer Service Center: 8004300030

[www.meshKati.sa](http://www.meshKati.sa)

Made in China  
صنع في الصين