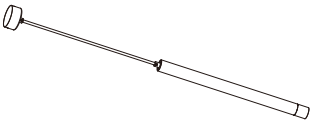


# NOORCO

## CEILING LIGHT HOUSING



### Product benefits & features:

When the luminaire is used in conjunction with a trim ring, the trim ring covers the outside of the luminaire and serves a decorative function. The trim ring is usually a circular or other shaped shell that can be attached to the luminaire, making it more attractive and coordinated with the overall decorative style.

The trim ring can also enhance the lighting effect. For example, some trim rings use reflective materials to reflect light over a wider range, improving the uniformity and brightness of the lighting effect.

Installation convenience: Luminaire trim rings typically use a detachable design, making installation and replacement easier without the need for professional help.

### Areas of application:

Living room, bedroom, dining room, shop, hotel, restaurant, office.

### Caution:

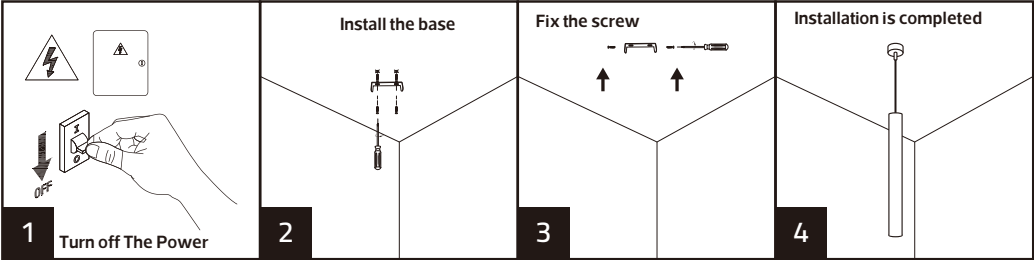
**1.Choosing the right faceplate:** Before purchasing a faceplate, make sure it matches the size and interface type of the corresponding light fixture. Different light fixtures may have different interface designs, so selecting the correct faceplate ensures a safe and secure installation.

**3. Consider the installation location:** Choose an appropriate installation location based on the characteristics and design requirements of the light fixture. Ensure there is sufficient space between the faceplate and the fixture, without obstructing heat dissipation or normal operation.

**4.Handle with care:** When installing or replacing a faceplate, handle it with care. Avoid excessive force or striking the faceplate to prevent damage.

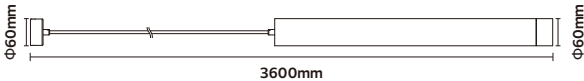
**5.Ensure stability:** When mounting the faceplate onto the light fixture, ensure it is securely fastened. Follow the instructions or installation guidelines provided by the manufacturer to properly secure the faceplate to the fixture, preventing looseness or shaking.

## Product Installation and Wiring Diagram



## Product Specifications and Dimensions

Model No:	NR-ICLS1302-1-WH
Input:	AC100-240V 50/60Hz
Cap Type:	GU10*1
Lamp Type:	MR16
Power:	Max.40W
IP rated:	IP20
Body Color:	White



      
Customer Service Center.8004300030  
مركز خدمة العملاء 8004300030  
[www.meshkati.sa](http://www.meshkati.sa)  
Made in China  
صنع في الصين

