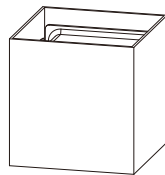


NOORCO

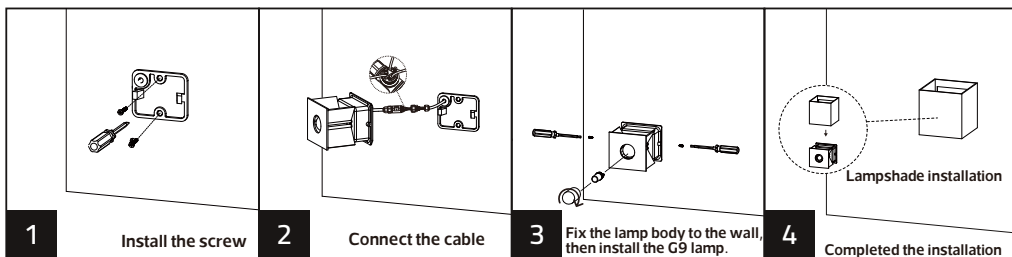
WALL LAMP HOUSING



Warning

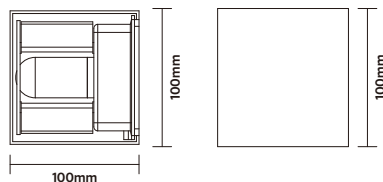
- Please read the product instructions carefully before installation. Keep this installation instruction manual for future reference.
- Installation of stationary products and connection of cables shall comply with local national electrical codes.
- For safety reasons, the product must be grounded to prevent damage from electrical leakage.
- All installation procedures must be performed by qualified electrician personnel.
- If the shell or internal structure of the product is damaged, please cut off the power and replace it by qualified electricians.

Product Installation and Wiring Diagram



Product Specifications and Dimensions

Model No:	NR-OWLS1901-1-BK
Input:	AC100-240V 50/60Hz
Cap Type:	G9*1
Power:	Max 12W
Lamp Type:	G9
IP rated:	IP65



ta:50°C



Customer Service Center.8004300030
مركز خدمة العملاء 8004300030
www.meshKati.sa
Made in China
صنع في الصين

