

Sill light

WL6520

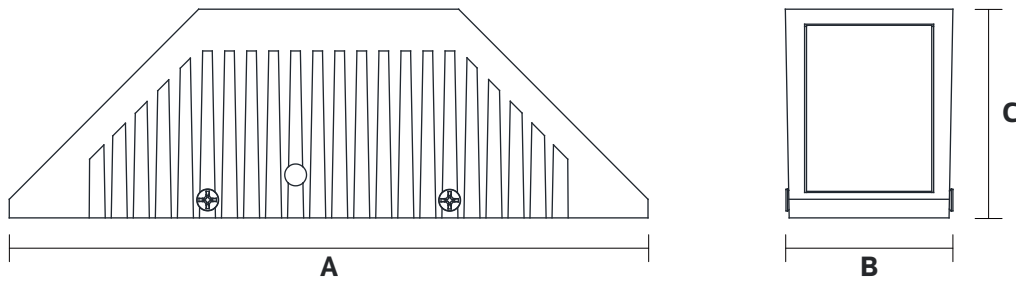
IP65

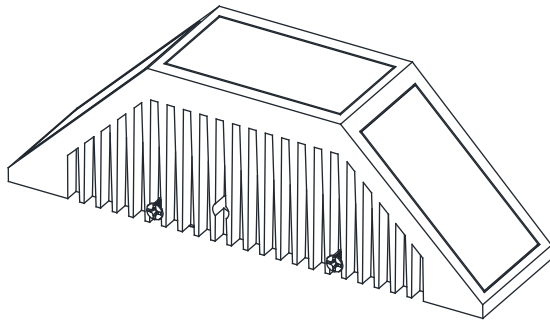
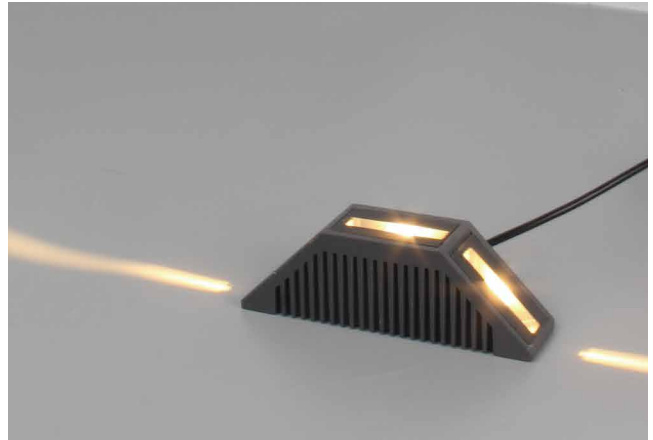


Outdoor	AC 220-240V	50/60 Hz	PF ≥0.9	CCT 3000K	Ra ≥80	IP65	Beam Angel 24°	Chips SMD	
---------	----------------	-------------	------------	--------------	-----------	------	----------------------	--------------	--

Item Code	P (W)	CCT (K)	Beam angle	Output (lm)	lm/w	Dimensions in mm			 kg
						A	B	C	
WL6520	15	3000	24°	525	35	203	55	69	0.71

Dimensions in mm





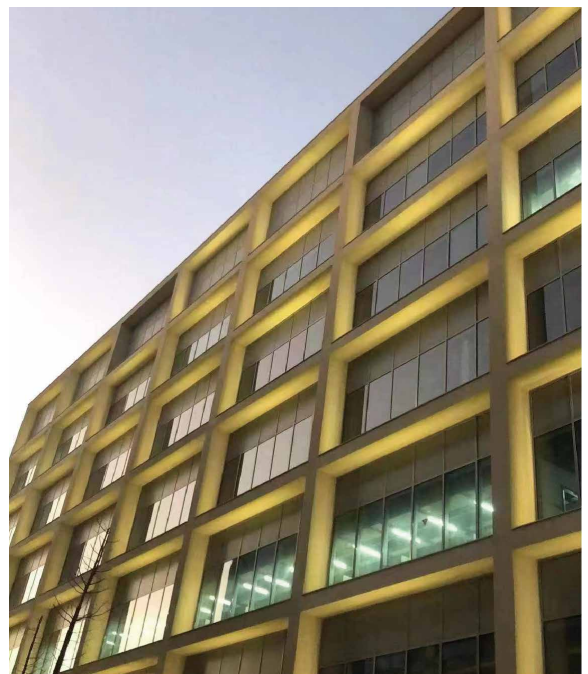
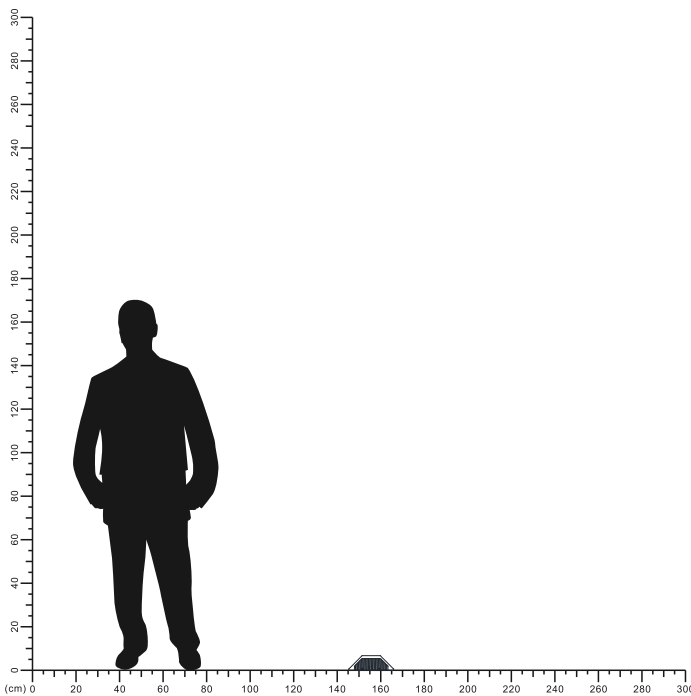
Description:
Sill light

Main material:
Die-cast aluminum+ glass cover

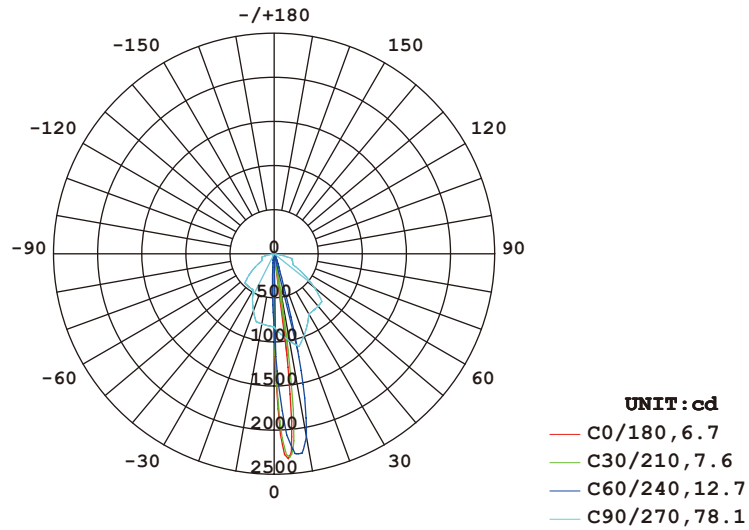
Specification
Energy saving, up to 85% energy saving comparing to standard halogen and incandescent lamps
High quality light, high color rendering, less heat, no UV or IR radiation
Build-in LED Driver
IP65

Applications

- . Park
- . Square
- . Tourist attraction
- . Corridor

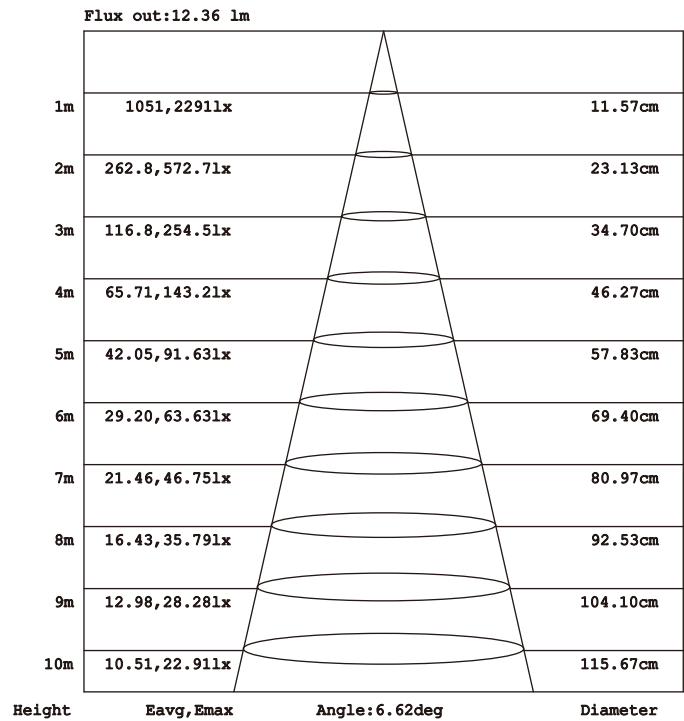


LUMINOUS INTENSITY DISTRIBUTION DIAGRAM



AVERAGE BEAM ANGLE (50%) : 26.3 DEG

Illuminance at a Distance



Note: The Curves indicate the illuminated area and the average illumination when the luminaire is at different distance.

